



Colorado River Municipal Water District

Monthly Water Report

December 2018

COLORADO RIVER MUNICIPAL WATER DISTRICT

PO Box 869, 400 East 24th Street

Big Spring, Texas 79721-0869

**Colorado River Municipal Water District
Water Delivered
December 2018**

Raw Water System

Member Cities	Total Deliveries This Month (Gal)	Daily Average For Month (Gal)	2018 Year to Date (Gal)
Big Spring	146,843,000	4,736,871	2,055,803,000
Odessa	497,760,600	16,056,794	7,696,499,200
Snyder	48,831,000	1,575,194	686,631,000
Subtotal	693,434,600	22,368,858	10,438,933,200

Municipal Customers

Grandfalls	0	0	7,239,000
Midland - 1966 Contract	292,152,300	9,424,268	3,931,691,900
Midland - Ivie Contract	0	0	640,717,000
Millersview Doole WSC	39,894,100	1,286,906	464,757,700
Pyote	936,900	30,223	18,198,500
San Angelo - Spence	0	0	0
San Angelo - Ivie	177,880,000	5,738,065	3,907,874,000
Stanton	8,693,700	280,442	102,350,300
University Lands	3,000	97	166,000
West Central Texas MWD	85,088,000	2,744,774	1,484,440,000
Subtotal	604,648,000	19,504,774	10,557,434,400

Industrial Customers

Alon Rural Meters	2,538,500	81,887	59,190,810
Luminant Generation	160,000	5,161	1,256,000
Occidental	710	23	275,040
Parallel Petroleum	29,670	957	831,410
Power Resources	2,600,000	83,871	114,063,000
Subtotal	5,328,880	171,899	175,616,260

Diverted Water System

Industrial Customers

BASA Resources	9,141,200	294,877	98,363,600
Energen	0	0	75,400
Fasken Oil Co.	146,800	4,735	2,491,150
Miranda Energy	0	0	14,300
Rover Operating	70,020	2,259	283,540
Sheridan Production	141,060	4,550	1,982,890
Subtotal	9,499,080	306,422	103,210,880

Total Deliveries	1,312,910,560	42,351,954	21,275,194,740
-------------------------	----------------------	-------------------	-----------------------

**COLORADO RIVER MUNICIPAL WATER DISTRICT
RESERVOIR REPORT
December 2018**

<u>Lake J. B. Thomas</u>	<u>This Month</u>	<u>2018 Year-to-Date Total</u>
<u>CONTENTS IN ACRE FEET</u>		
CAPACITY WHEN FULL	200,604	
CAPACITY THIS DATE	74,605	
PERCENT FULL	37.19%	
FREE CAPACITY THIS DATE	125,999	
INFLOWS*	1,056	12,555
PASS THROUGH / RELEASES	0	0
WITHDRAWALS	693	13,921
EVAPORATION*	(1,772)	(23,249)

<u>ELEVATION ABOVE MEAN SEA LEVEL</u>		
ELEVATION WHEN FULL	2,258.00	
ELEVATION THIS DATE	2,235.47	

E. V. Spence Reservoir

<u>CONTENTS IN ACRE FEET</u>		
CAPACITY WHEN FULL	517,272	
CAPACITY THIS DATE	138,366	
PERCENT FULL	26.75%	
FREE CAPACITY THIS DATE	378,906	
INFLOWS*	3,454	96,010
PASS THROUGH / RELEASES	0	0
WITHDRAWALS	245	8,330
EVAPORATION*	(277)	(16,174)

<u>ELEVATION ABOVE MEAN SEA LEVEL</u>		
ELEVATION WHEN FULL	1,898.00	
ELEVATION THIS DATE	1,861.35	

**COLORADO RIVER MUNICIPAL WATER DISTRICT
RESERVOIR REPORT
December 2018**

	<u>This Month</u>	<u>2018 Year-to-Date Total</u>
<u>O. H. Ivie Reservoir</u>		
<i><u>CONTENTS IN ACRE FEET</u></i>		
CAPACITY WHEN FULL	554,340	
CAPACITY THIS DATE	275,210	
PERCENT FULL	49.65%	
FREE CAPACITY THIS DATE	279,130	
INFLOWS*	24,013	219,357
PASS THROUGH / RELEASES	189	2,868
WITHDRAWALS	2,018	40,389
SPILLS	0	0
EVAPORATION*	0	(17,188)
<i><u>ELEVATION ABOVE MEAN SEA LEVEL</u></i>		
ELEVATION WHEN FULL	1,551.50	
ELEVATION THIS DATE	1,533.41	

Moss Creek Lake

<i><u>CONTENTS IN ACRE FEET</u></i>		
CAPACITY WHEN FULL	3,441	
CAPACITY THIS DATE	1,154	
PERCENT FULL	33.54%	
FREE CAPACITY THIS DATE	2,287	
INFLOWS*	4	701
PASS THROUGH / RELEASES	0	0
WITHDRAWALS	1,060	269
SPILLS	0	0
EVAPORATION*	(20)	(725)
<i><u>ELEVATION ABOVE MEAN SEA LEVEL</u></i>		
ELEVATION WHEN FULL	2,336.50	
ELEVATION THIS DATE	2,318.69	

Reservoir Summary						
Reservoir	Elevation	Current Capacity (Acre Feet)	Year to Date Inflow (Acre Feet)	Year to Date Withdrawals (Acre Feet)	Year to Date Pass Through / Releases (Acre Feet)	Year to Date Evaporation (Acre Feet)
Lake J.B. Thomas	2,235.47	74,605	12,555	13,921	0	(23,249)
E.V. Spence Reservoir	1,861.35	138,366	96,010	8,330	0	(16,174)
O.H. Ivie Reservoir	1,533.41	275,210	219,357	40,389	2,868	(17,188)
Moss Creek Lake	2,318.69	1,154	701	269	0	(725)
	Total	489,335	328,623	62,909	2,868	(57,336)

* Inflow and Evaporation are approximate.

**COLORADO RIVER MUNICIPAL WATER DISTRICT
 DIVERTED / WATER QUALITY ENHANCEMENT SYSTEM
 RESERVOIRS REPORT
 December 2018**

	<u>This Month</u>	<u>2018 Year-to-Date Total</u>
<u>Natural Dam</u>		
<i><u>CONTENTS IN ACRE FEET</u></i>		
CAPACITY WHEN FULL	54,560	
CAPACITY THIS DATE	7,500	
PERCENT FULL	13.75%	
FREE CAPACITY THIS DATE	47,060	
INFLOWS*	0	1,977
SPILLS	0	0
EVAPORATION*	(236)	(6,586)
<i><u>ELEVATION ABOVE MEAN SEA LEVEL</u></i>		
ELEVATION WHEN FULL	2,457.00	
ELEVATION THIS DATE	2,436.80	
<u>Sulphur Draw Reservoir</u>		
<i><u>CONTENTS IN ACRE FEET</u></i>		
CAPACITY WHEN FULL	7,997	
CAPACITY THIS DATE	851	
PERCENT FULL	10.64%	
FREE CAPACITY THIS DATE	7,146	
INFLOWS*	0	566
PASS THROUGH / RELEASES	0	0
EVAPORATION*	(38)	(1,359)
<i><u>ELEVATION ABOVE MEAN SEA LEVEL</u></i>		
ELEVATION WHEN FULL	2,541.00	
ELEVATION THIS DATE	2,527.00	

**COLORADO RIVER MUNICIPAL WATER DISTRICT
 DIVERTED / WATER QUALITY ENHANCEMENT SYSTEM
 RESERVOIRS REPORT
 December 2018**

	<u>This Month</u>	<u>2018 Year-to-Date Total</u>
<u>Barber Lake</u>		
<i><u>CONTENTS IN ACRE FEET</u></i>		
CAPACITY WHEN FULL	2,503	
CAPACITY THIS DATE	877	
PERCENT FULL	35.04%	
FREE CAPACITY THIS DATE	1,626	
INFLOWS*	43	477
WIER FLOW	0	2
PUMPED IN	264	1,371
WITHDRAWALS	0	0
SPILLS	0	0
EVAPORATION*	(15)	(228)
<i><u>ELEVATION ABOVE MEAN SEA LEVEL</u></i>		
ELEVATION WHEN FULL	2,097.00	
ELEVATION THIS DATE	2,086.10	
<u>Red Draw</u>		
<i><u>CONTENTS IN ACRE FEET</u></i>		
CAPACITY WHEN FULL	8,538	
CAPACITY THIS DATE	2,112	
PERCENT FULL	24.74%	
FREE CAPACITY THIS DATE	6,426	
INFLOWS*	316	1696
PUMPED IN	294	1405
WITHDRAWALS	0	1
SPILLS	0	0
EVAPORATION*	(23)	(554)
<i><u>ELEVATION ABOVE MEAN SEA LEVEL</u></i>		
ELEVATION WHEN FULL	2,445.00	
ELEVATION THIS DATE	2,419.30	

**COLORADO RIVER MUNICIPAL WATER DISTRICT
 DIVERTED / WATER QUALITY ENHANCEMENT SYSTEM
 RESERVOIRS REPORT
 December 2018**

<u>Mitchell County</u>	<u>This Month</u>	<u>2018 Year-to-Date Total</u>
<u>CONTENTS IN ACRE FEET</u>		
CAPACITY WHEN FULL	27,266	
CAPACITY THIS DATE	14,195	
PERCENT FULL	52.06%	
FREE CAPACITY THIS DATE	13,071	
INFLOWS*	909	11,757
SPILLS	0	0
TRANSFERS IN	0	(932)
EVAPORATION*	(169)	(4,739)
<u>ELEVATION ABOVE MEAN SEA LEVEL</u>		
ELEVATION WHEN FULL	2,200.00	
ELEVATION THIS DATE	2,189.00	

Diverted / Water Quality Enhancement System Summary				
Reservoir	Elevation	Capacity	Year to Date Inflow (Acre Feet)	Year to Date Evaporation (Acre Feet)
Natural Dam	2,436.80	7,500	1,977	(6,586)
Sulphur Draw	2,527.00	851	566	(1,359)
Barber Lake	2,086.10	877	477	(228)
Red Draw	2,419.30	2,112	1,696	(554)
Mitchell County Reservoir	2,189.00	14,195	11,757	(4,739)
	Total	25,535	16,473	(13,466)

* Inflow and Evaporation are approximate.

Water Quality Diversions		
Source	Current Month (Acre Feet)	Year to Date (Acre Feet)
Colorado River	264	1,371
Beals Creek	22	556
	Total	286

**COLORADO RIVER MUNICIPAL WATER DISTRICT
GROUNDWATER REPORT
December 2018**

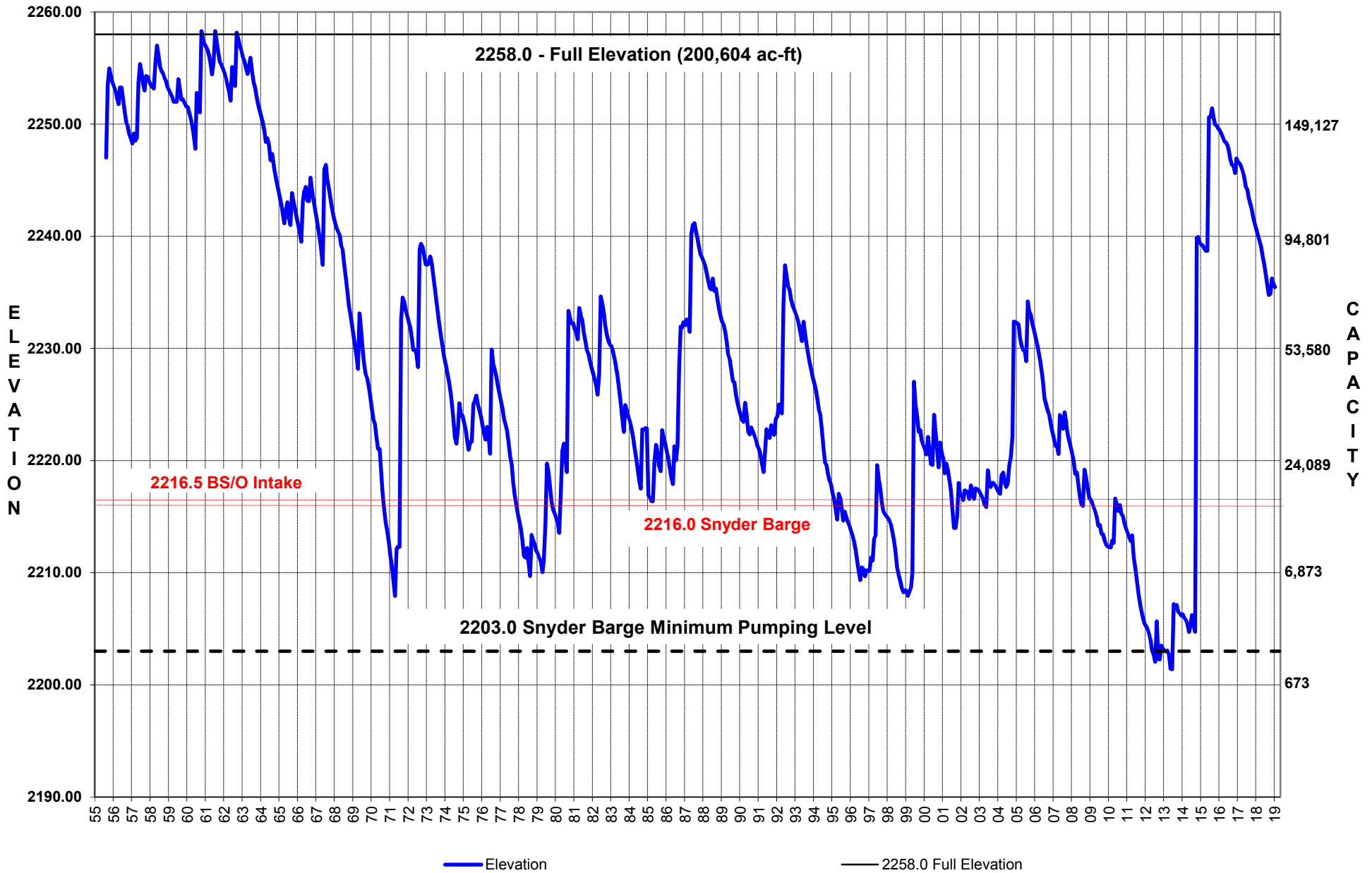
<u>Well Field</u>	<u>Production This Month (Gallons)</u>	<u>Daily Average for Month (Gal)</u>	<u>2018 Production Year-to-Date (Gallons)</u>
Ward County North Well Field	13,703,500	442,048	367,895,180
Ward County South Well Field	6,269,000	202,226	55,308,800
Odessa Well Field (Out of Service)	0	0	0
Martin County Well Field	48,670	1,570	3,833,790
Snyder Well Field	0	0	17,732,400
Pyote Well Field	1,181,000	38,097	22,696,000
Total	21,202,170	683,941	467,466,170

**BIG SPRING RAW WATER PRODUCTION FACILITY
PRODUCTION REPORT
December 2018**

	<u>Production This Month (Gallons)</u>	<u>Daily Average for Month (Gal)</u>	<u>2018 Production Year-to-Date (Gallons)</u>
Big Spring Raw Water Production Facility	2,690,000	86,774	428,410,000

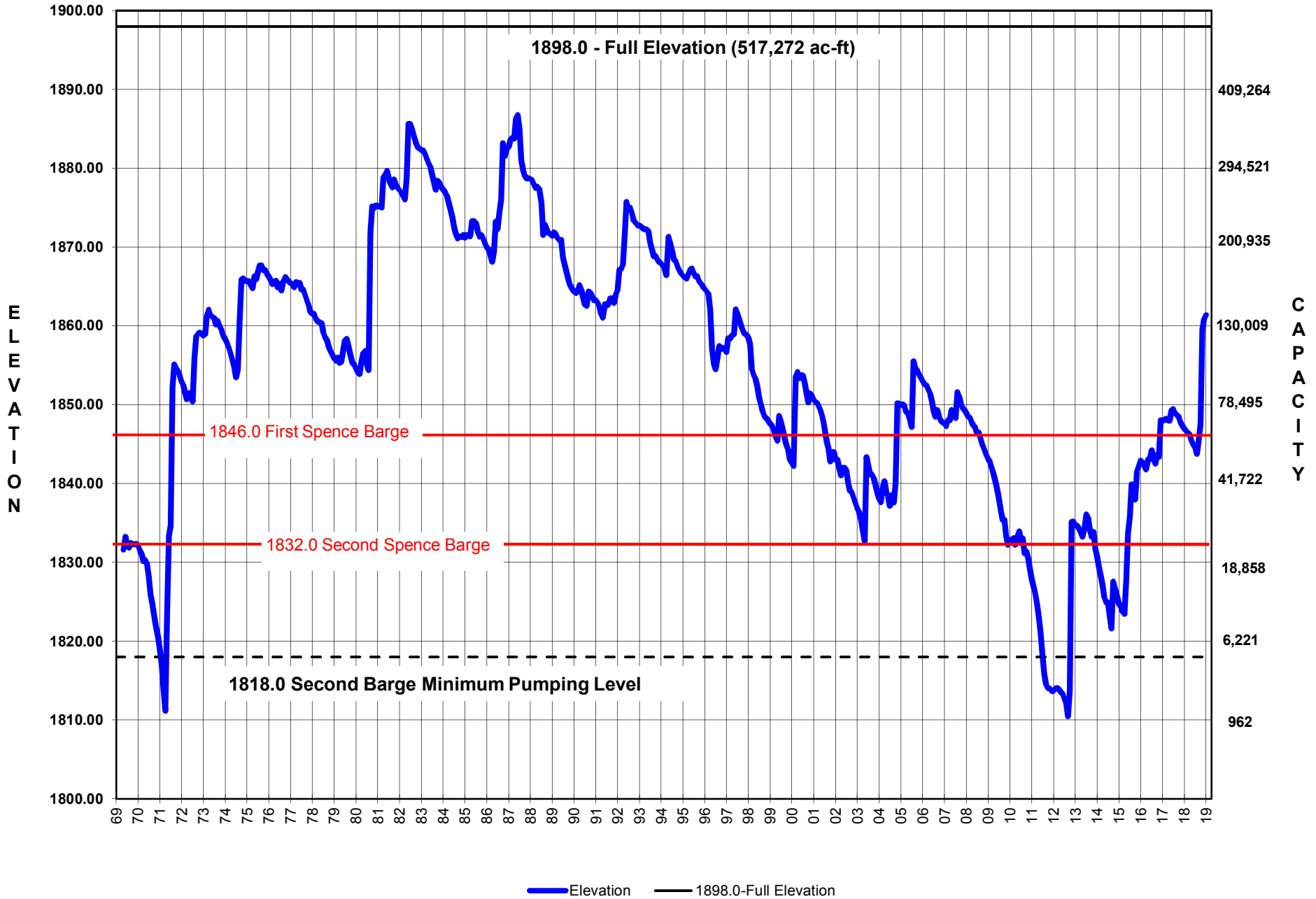
LAKE J.B. THOMAS

Elevation August 1955 - December 2018



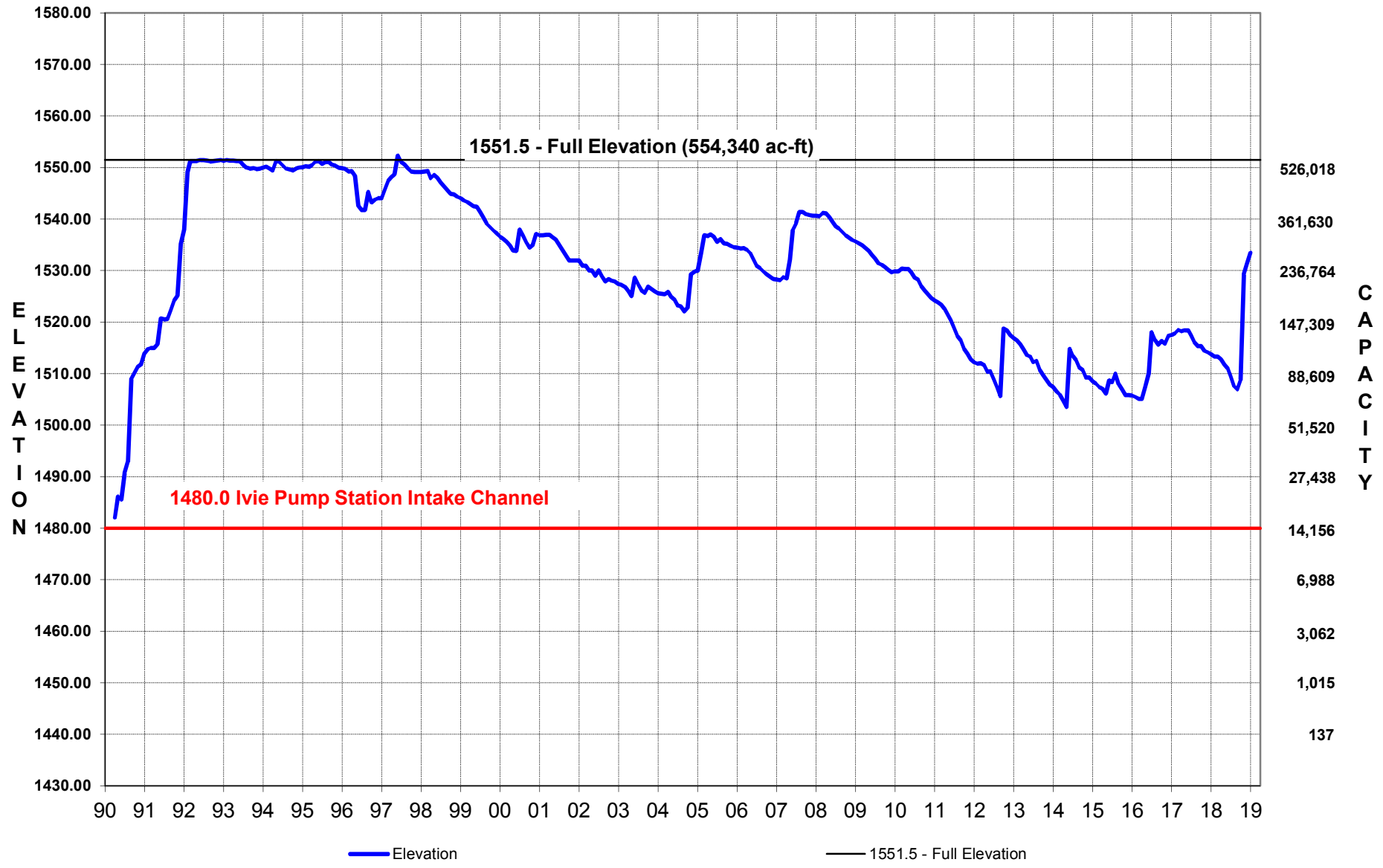
E.V. SPENCE RESERVOIR

Elevation May 1969 - December 2018



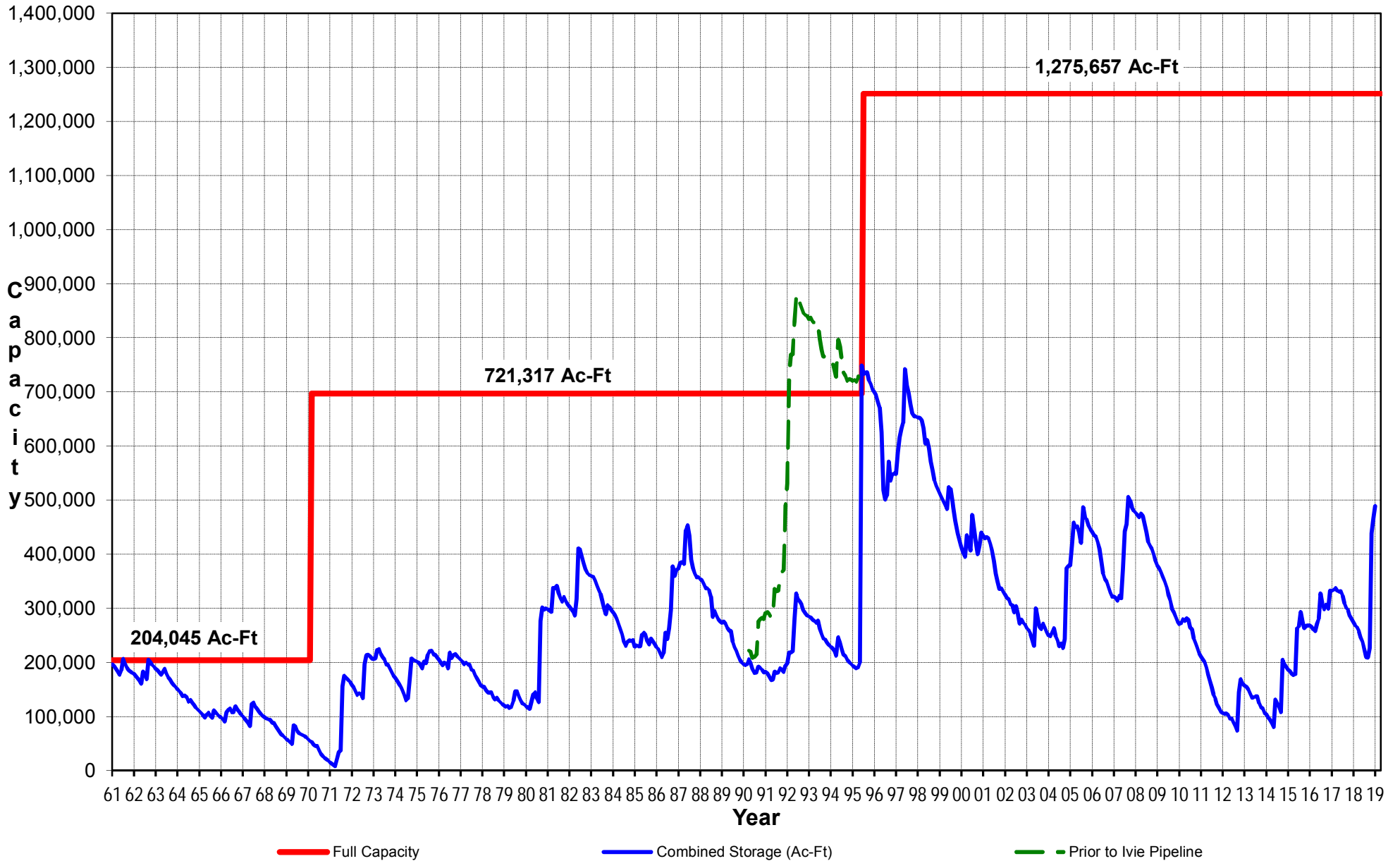
O.H. IVIE RESERVOIR

Elevation April 1990 - December 2018



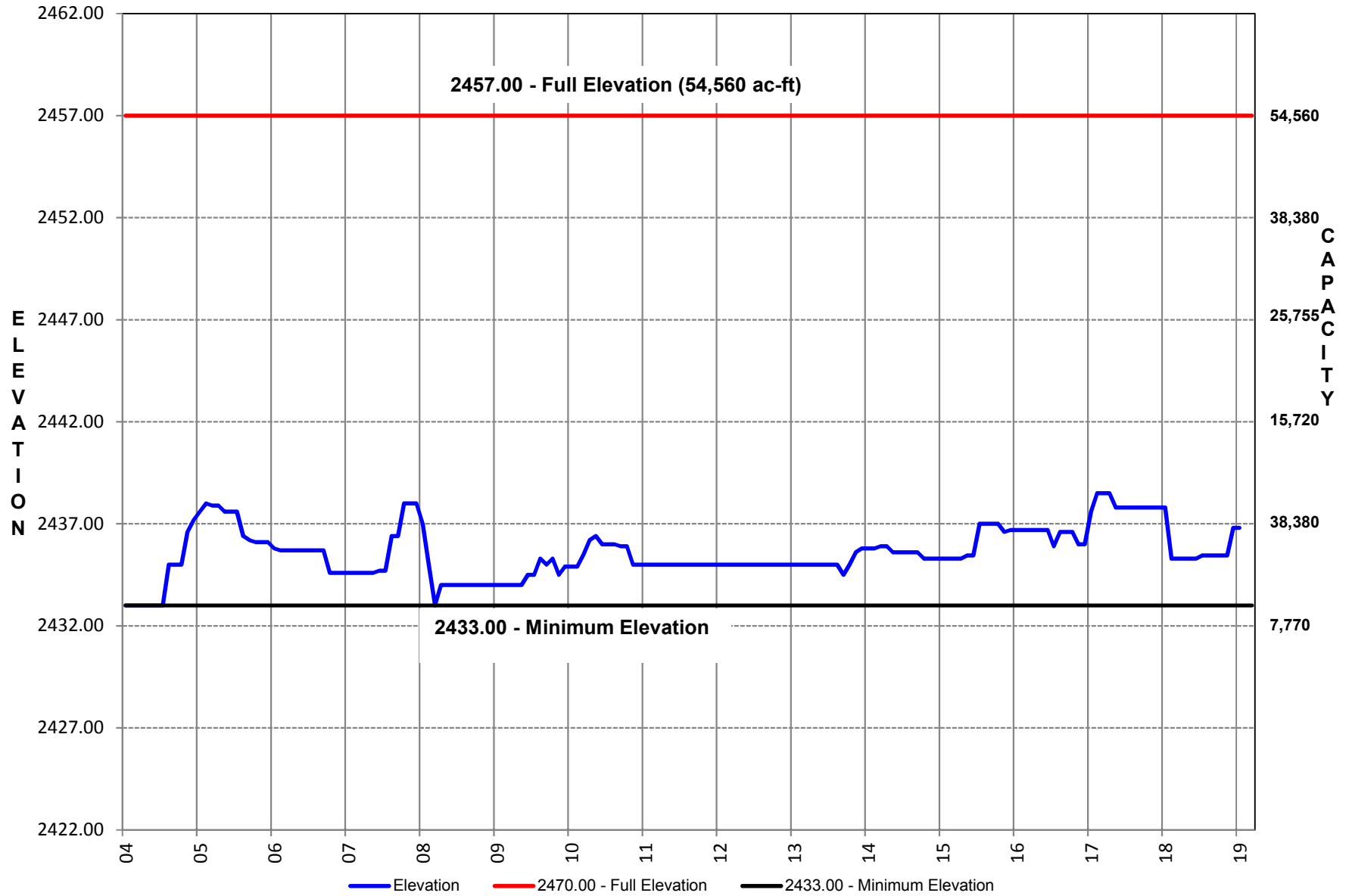
COLORADO RIVER MUNICIPAL WATER DISTRICT

COMBINED STORAGE Thomas, Spence, Moss, Ivie



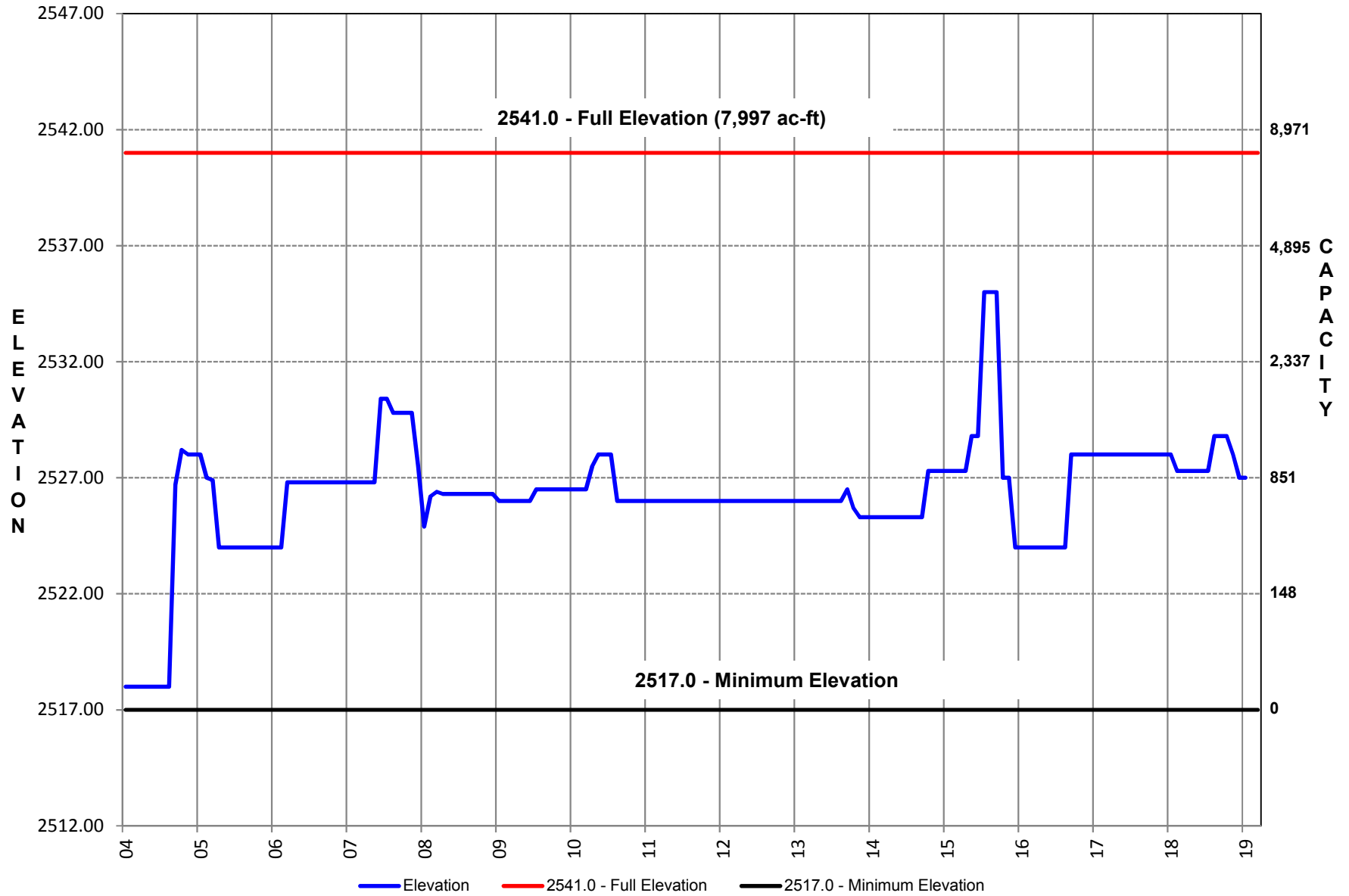
Natural Dam Reservoir

Elevation January 2004 - December 2018



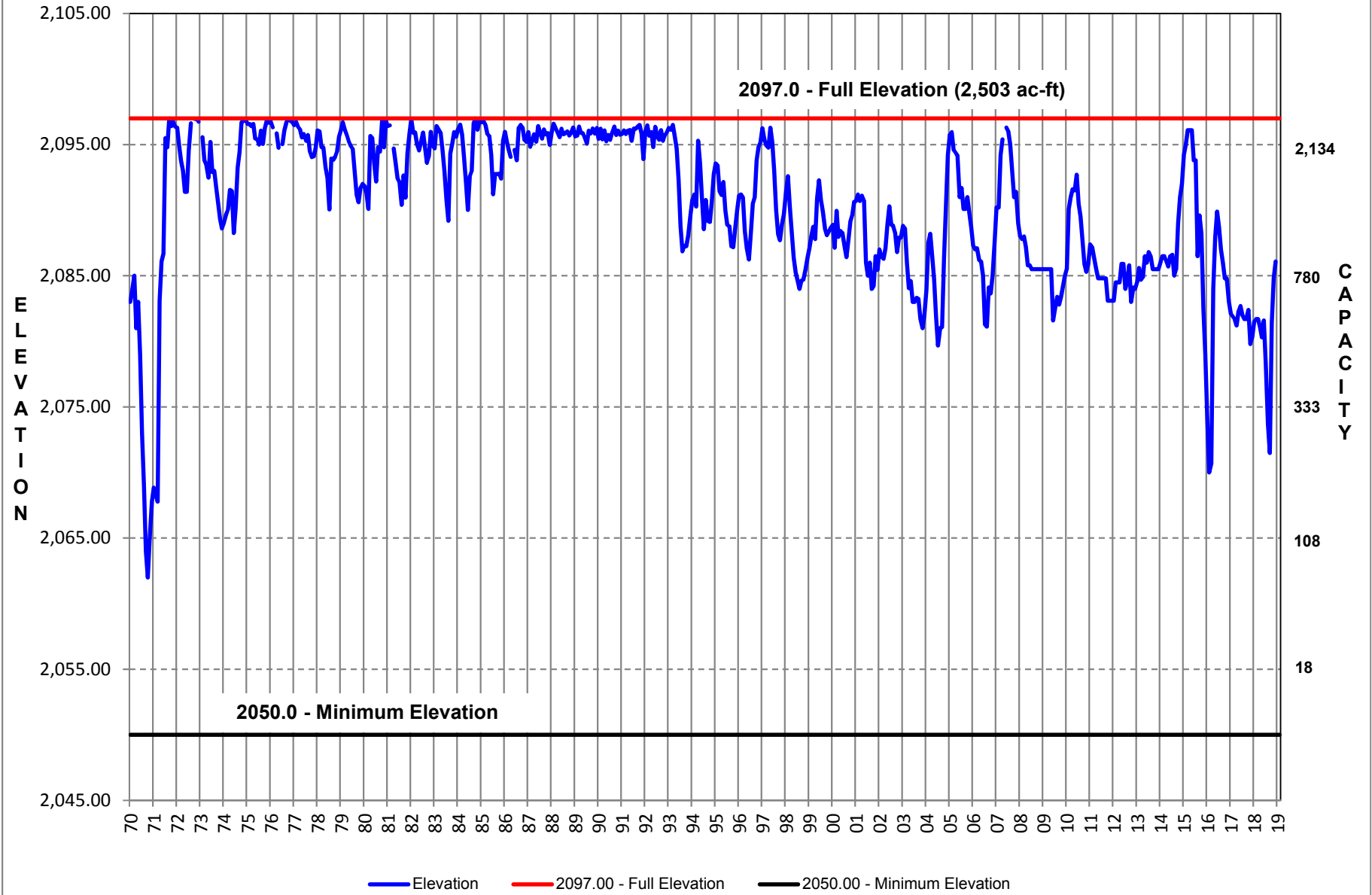
Sulphur Draw Reservoir

Elevation January 2004 - December 2018



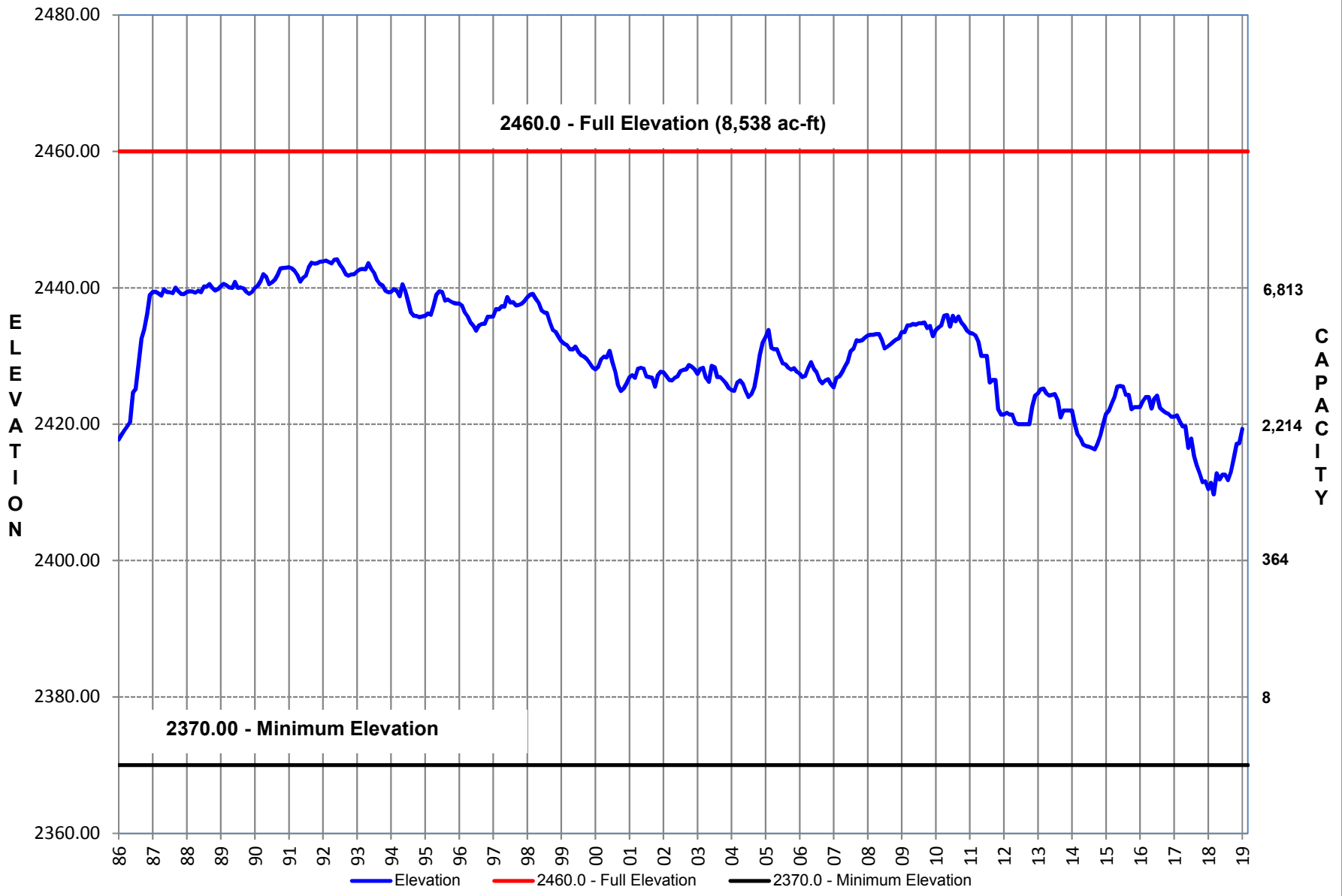
Barber Lake

Elevation February 1970 - December 2018



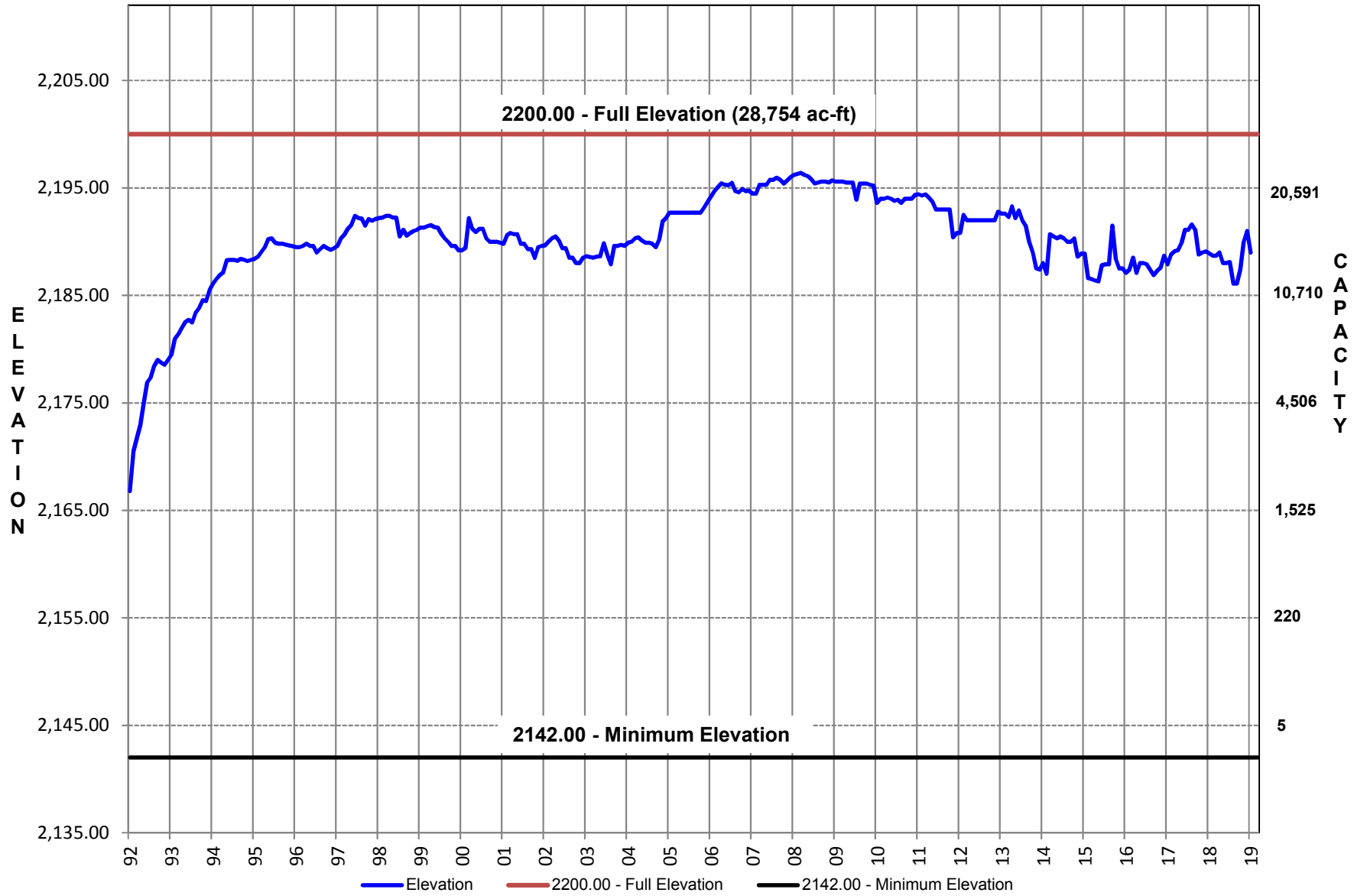
Red Draw

Elevation January 1986 - December 2018



Mitchell County Reservoir

Elevation January 1992 - December 2018



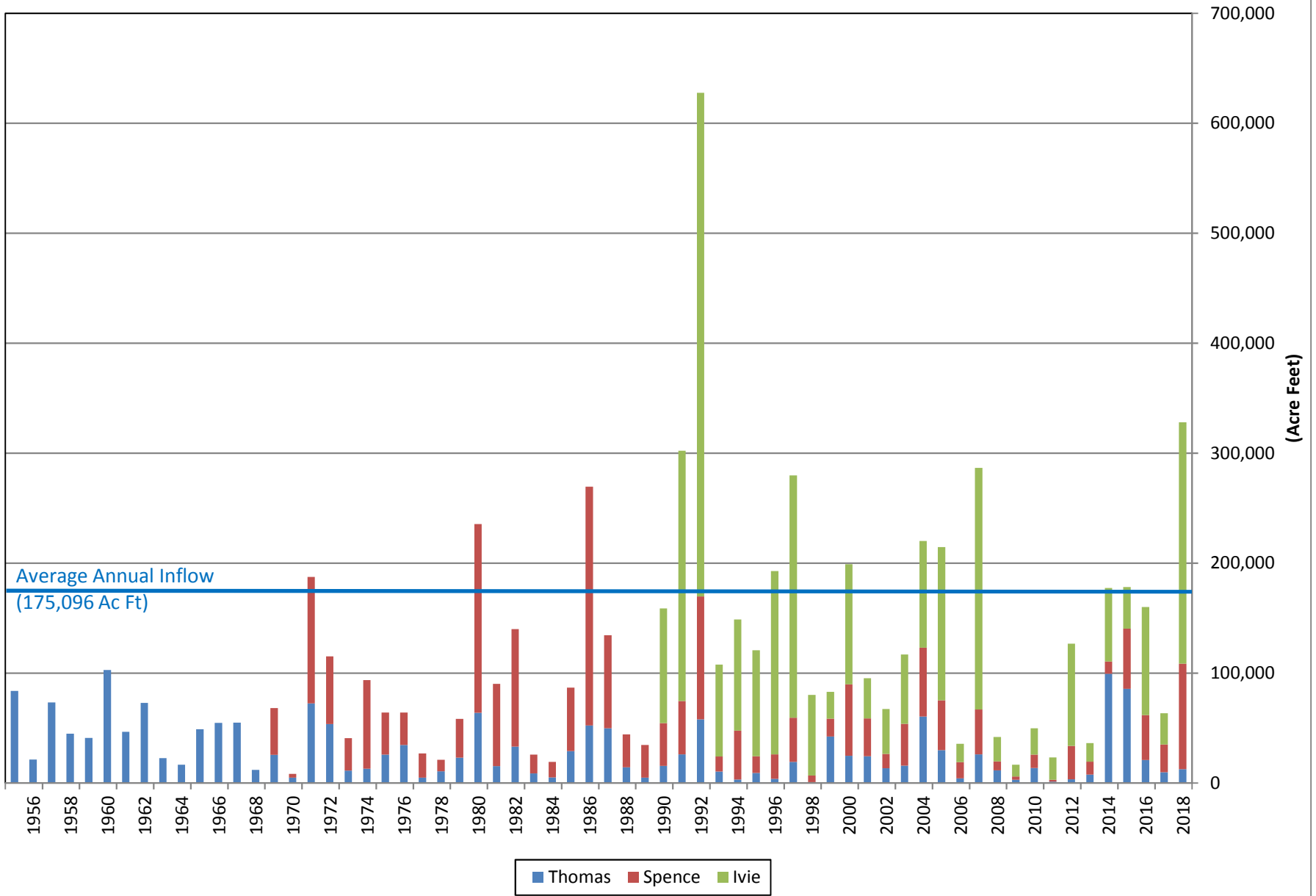
Annual Historical Data

COLORADO RIVER MUNICIPAL WATER DISTRICT

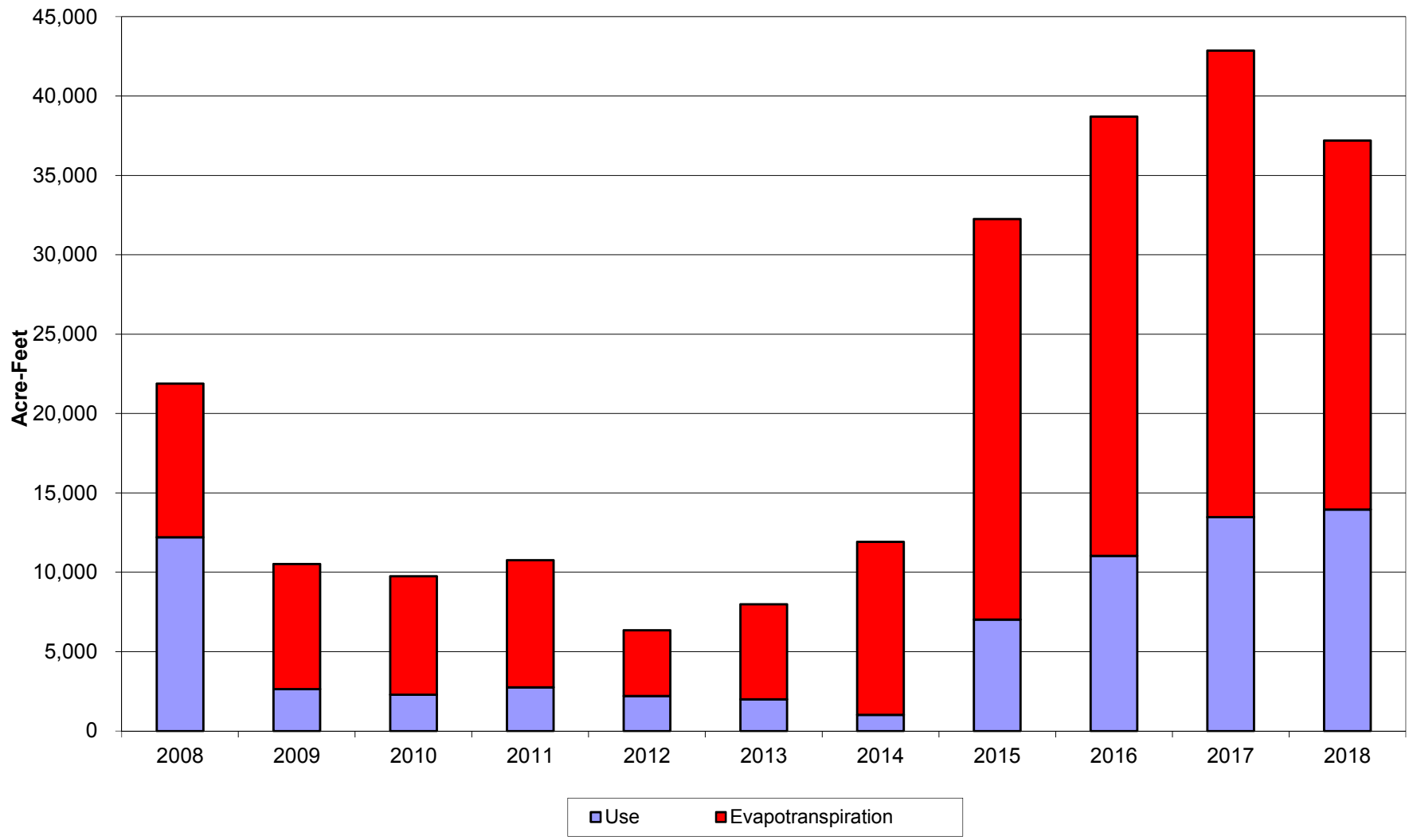
RESERVOIR INFLOW SUMMARY

Calendar Year	J.B. Thomas (AC-FT)	E.V. Spence (AC-FT)	O.H. Ivie (AC-FT)	Total (AC-FT)
2018	12,555	96,010	219,357	327,922
2017	9,768	25,255	28,405	63,428
2016	20,888	40,914	98,262	160,064
2015	85,698	54,737	37,696	178,131
2014	99,308	11,218	66,819	177,345
2013	7,739	11,754	16,824	36,317
2012	3,408	30,247	93,091	126,746
2011	1,343	1,585	20,411	23,339
2010	13,717	12,034	24,069	49,820
2009	2,901	2,996	10,659	16,556
2008	11,565	8,125	22,229	41,919
2007	26,077	40,861	219,568	286,506
2006	4,339	14,624	16,716	35,679
2005	29,804	45,367	139,349	214,520
2004	60,474	62,624	96,945	220,043
2003	15,828	38,048	62,910	116,786
2002	13,341	13,094	40,928	67,363
2001	24,294	34,528	36,355	95,177
2000	24,713	65,118	109,145	198,976
1999	42,206	16,323	24,368	82,897
1998	856	6,032	73,280	80,168
1997	19,189	40,288	220,148	279,625
1996	3,920	22,193	166,633	192,746
1995	9,176	15,140	96,358	120,674
1994	3,100	44,557	101,101	148,758
1993	10,473	13,600	83,592	107,665
1992	57,863	111,840	457,817	627,520
1991	26,110	48,525	227,569	302,204
1990	15,584	38,972	104,278	158,834
1989	4,832	29,657	-	34,489
1988	14,181	29,968	-	44,149
1987	49,818	84,582	-	134,400
1986	52,244	217,121	-	269,365
1985	29,106	57,565	-	86,671
1984	5,027	14,101	-	19,128
1983	8,661	17,236	-	25,897
1982	33,049	106,852	-	139,901
1981	15,314	74,911	-	90,225
1980	63,972	171,415	-	235,387
1979	23,011	35,366	-	58,377
1978	10,553	10,674	-	21,227
1977	4,802	22,138	-	26,940
1976	34,534	29,457	-	63,991
1975	25,897	38,081	-	63,978
1974	13,095	80,377	-	93,472
1973	11,190	29,502	-	40,692
1972	53,512	61,546	-	115,058
1971	72,391	115,082	-	187,473
1970	4,945	3,364	-	8,309
1969	25,609	42,628	-	68,237
1968	11,977	-	-	11,977
1967	54,971	-	-	54,971
1966	54,777	-	-	54,777
1965	48,975	-	-	48,975
1964	16,660	-	-	16,660
1963	22,580	-	-	22,580
1962	72,841	-	-	72,841
1961	46,456	-	-	46,456
1960	102,836	-	-	102,836
1959	41,080	-	-	41,080
1958	44,921	-	-	44,921
1957	73,285	-	-	73,285
1956	21,240	-	-	21,240
1955	83,755	-	-	83,755
Annual Average	29,818	44,765	100,513	175,096

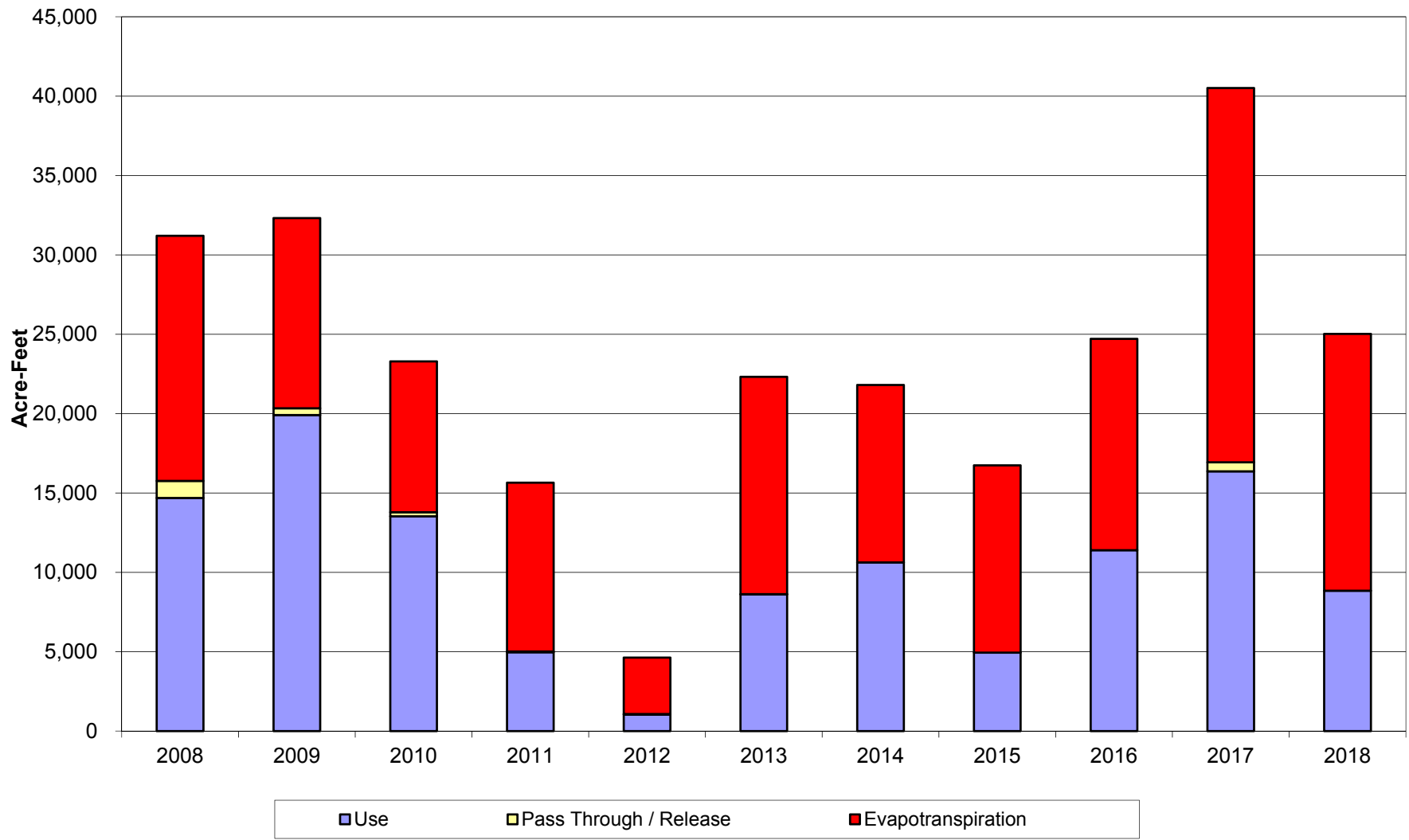
Combined Inflow (1955 through 2018)



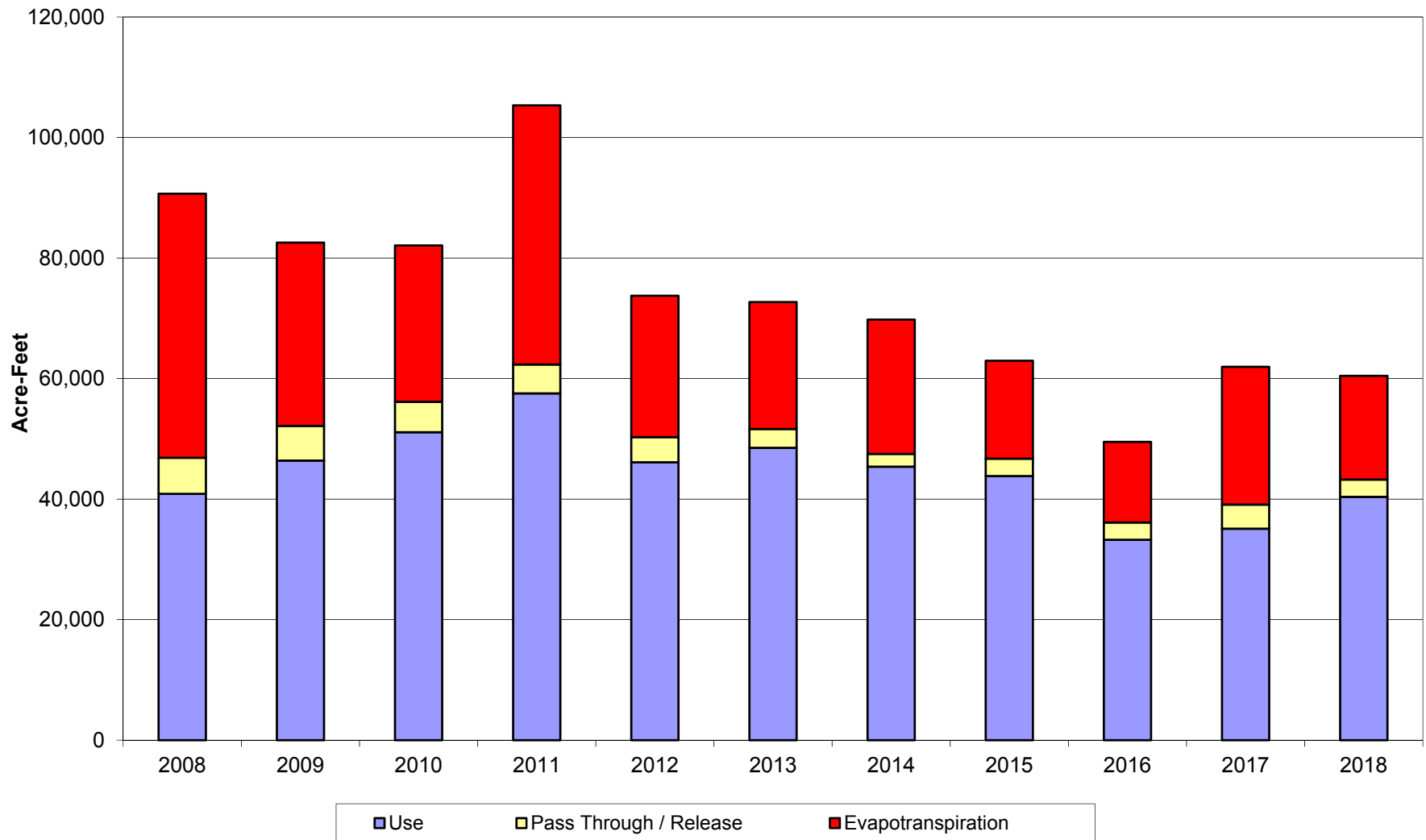
Lake J.B. Thomas
January 2008 thru December 2018



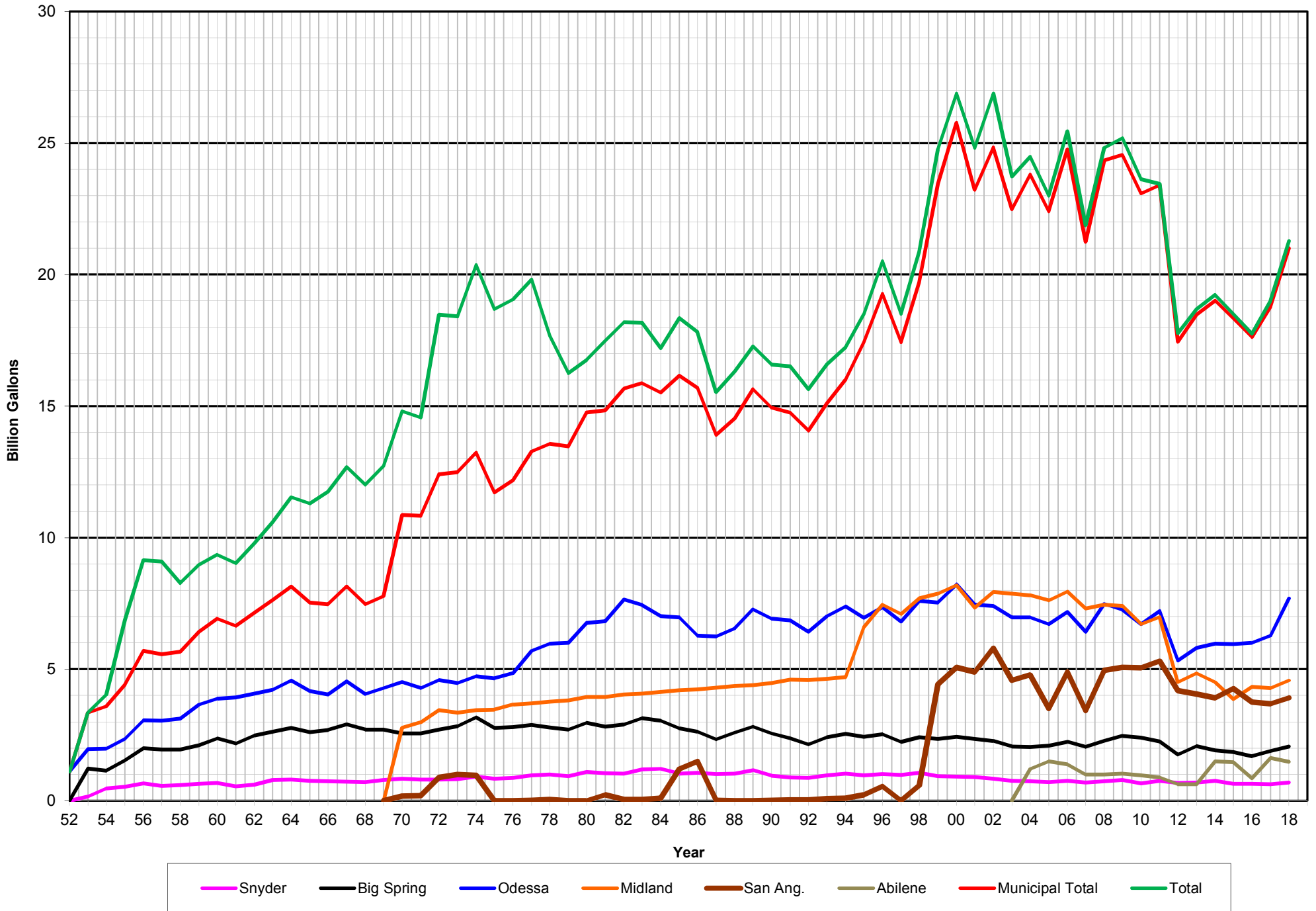
**E.V. Spence Reservoir
January 2008 thru December 2018**



O.H. Ivie Reservoir
January 2008 thru December 2018



Colorado River Municipal Water District Historical Water Delivery - FY 1952 - 2018



Colorado River Municipal Water District Source of Supply January 1962 through December 2018

