



Colorado River Municipal Water District

Monthly Water Report

January 2019

COLORADO RIVER MUNICIPAL WATER DISTRICT

PO Box 869, 400 East 24th Street

Big Spring, Texas 79721-0869

**Colorado River Municipal Water District
Water Delivered
January 2019**

Raw Water System

Member Cities	Total Deliveries This Month (Gal)	Daily Average For Month (Gal)	2019 Year to Date (Gal)
Big Spring	143,036,000	4,614,065	143,036,000
Odessa	496,857,800	16,027,671	496,857,800
Snyder	46,792,000	1,509,419	46,792,000
Subtotal	686,685,800	22,151,155	686,685,800

Municipal Customers

Grandfalls	0	0	0
Midland - 1966 Contract	192,108,400	6,197,045	192,108,400
Midland - Ivie Contract	91,859,000	2,963,194	91,859,000
Millersview Doole WSC	28,566,000	921,484	28,566,000
Pyote	1,256,900	40,545	1,256,900
San Angelo - Spence	0	0	0
San Angelo - Ivie	258,186,000	8,328,581	258,186,000
Stanton	9,168,500	295,758	9,168,500
University Lands	2,000	65	2,000
West Central Texas MWD	26,414,000	852,065	26,414,000
Subtotal	607,560,800	19,598,735	607,560,800

Industrial Customers

Alon Rural Meters	2,734,100	88,197	2,734,100
Luminant Generation	0	0	0
Occidental	310	10	310
Parallel Petroleum	43,160	1,392	43,160
Power Resources	1,557,000	50,226	1,557,000
Subtotal	4,334,570	139,825	4,334,570

Diverted Water System

Industrial Customers

BASA Resources	7,606,300	245,365	7,606,300
Energen	2,200	71	2,200
Fasken Oil Co.	146,720	4,733	146,720
Miranda Energy	0	0	0
Rover Operating	16,170	522	16,170
Sheridan Production	167,260	5,395	167,260
Subtotal	7,938,650	256,085	7,938,650

Total Deliveries	1,306,519,820	42,145,801	1,306,519,820
-------------------------	----------------------	-------------------	----------------------

**COLORADO RIVER MUNICIPAL WATER DISTRICT
RESERVOIR REPORT
January 2019**

<u>Lake J. B. Thomas</u>	<u>This Month</u>	<u>2019 Year-to-Date Total</u>
<u>CONTENTS IN ACRE FEET</u>		
CAPACITY WHEN FULL	200,604	
CAPACITY THIS DATE	72,566	
PERCENT FULL	36.17%	
FREE CAPACITY THIS DATE	128,038	
INFLOWS*	229	229
PASS THROUGH / RELEASES	0	0
WITHDRAWALS	941	941
EVAPORATION*	(1,682)	(1,682)

<u>ELEVATION ABOVE MEAN SEA LEVEL</u>		
ELEVATION WHEN FULL	2,258.00	
ELEVATION THIS DATE	2,234.98	

E. V. Spence Reservoir

<u>CONTENTS IN ACRE FEET</u>		
CAPACITY WHEN FULL	517,272	
CAPACITY THIS DATE	139,952	
PERCENT FULL	27.06%	
FREE CAPACITY THIS DATE	377,320	
INFLOWS*	2,412	2,412
PASS THROUGH / RELEASES	0	0
WITHDRAWALS	3	3
EVAPORATION*	(861)	(861)

<u>ELEVATION ABOVE MEAN SEA LEVEL</u>		
ELEVATION WHEN FULL	1,898.00	
ELEVATION THIS DATE	1,861.60	

**COLORADO RIVER MUNICIPAL WATER DISTRICT
RESERVOIR REPORT
January 2019**

	<u>This Month</u>	<u>2019 Year-to-Date Total</u>
<u>O. H. Ivie Reservoir</u>		
<i><u>CONTENTS IN ACRE FEET</u></i>		
CAPACITY WHEN FULL	554,340	
CAPACITY THIS DATE	290,225	
PERCENT FULL	52.36%	
FREE CAPACITY THIS DATE	264,115	
INFLOWS*	17,790	17,790
PASS THROUGH / RELEASES	195	195
WITHDRAWALS	2,580	2,580
SPILLS	0	0
EVAPORATION*	0	0
<i><u>ELEVATION ABOVE MEAN SEA LEVEL</u></i>		
ELEVATION WHEN FULL	1,551.50	
ELEVATION THIS DATE	1,534.65	

Moss Creek Lake

<i><u>CONTENTS IN ACRE FEET</u></i>		
CAPACITY WHEN FULL	3,441	
CAPACITY THIS DATE	412	
PERCENT FULL	11.97%	
FREE CAPACITY THIS DATE	3,029	
INFLOWS*	1	1
PASS THROUGH / RELEASES	0	0
WITHDRAWALS	525	525
SPILLS	0	0
EVAPORATION*	(14)	(14)
<i><u>ELEVATION ABOVE MEAN SEA LEVEL</u></i>		
ELEVATION WHEN FULL	2,336.50	
ELEVATION THIS DATE	2,309.17	

Reservoir Summary						
Reservoir	Elevation	Current Capacity (Acre Feet)	Year to Date Inflow (Acre Feet)	Year to Date Withdrawals (Acre Feet)	Year to Date Pass Through / Releases (Acre Feet)	Year to Date Evaporation (Acre Feet)
Lake J.B. Thomas	2,234.98	72,566	229	941	0	(1,682)
E.V. Spence Reservoir	1,861.60	139,952	2,412	3	0	(861)
O.H. Ivie Reservoir	1,534.65	290,225	17,790	2,580	195	0
Moss Creek Lake	2,309.17	412	1	525	0	(14)
Total		503,155	20,432	4,049	195	(2,557)

* Inflow and Evaporation are approximate.

**COLORADO RIVER MUNICIPAL WATER DISTRICT
 DIVERTED / WATER QUALITY ENHANCEMENT SYSTEM
 RESERVOIRS REPORT
 January 2019**

	<u>This Month</u>	<u>2019 Year-to-Date Total</u>
<u>Natural Dam</u>		
<i><u>CONTENTS IN ACRE FEET</u></i>		
CAPACITY WHEN FULL	54,560	
CAPACITY THIS DATE	7,500	
PERCENT FULL	13.75%	
FREE CAPACITY THIS DATE	47,060	
INFLOWS*	0	0
SPILLS	0	0
EVAPORATION*	(278)	(278)
<i><u>ELEVATION ABOVE MEAN SEA LEVEL</u></i>		
ELEVATION WHEN FULL	2,457.00	
ELEVATION THIS DATE	2,436.80	
<u>Sulphur Draw Reservoir</u>		
<i><u>CONTENTS IN ACRE FEET</u></i>		
CAPACITY WHEN FULL	7,997	
CAPACITY THIS DATE	851	
PERCENT FULL	10.64%	
FREE CAPACITY THIS DATE	7,146	
INFLOWS*	0	0
PASS THROUGH / RELEASES	0	0
EVAPORATION*	(45)	(45)
<i><u>ELEVATION ABOVE MEAN SEA LEVEL</u></i>		
ELEVATION WHEN FULL	2,541.00	
ELEVATION THIS DATE	2,527.00	

**COLORADO RIVER MUNICIPAL WATER DISTRICT
 DIVERTED / WATER QUALITY ENHANCEMENT SYSTEM
 RESERVOIRS REPORT
 January 2019**

	<u>This Month</u>	<u>2019 Year-to-Date Total</u>
<u>Barber Lake</u>		
<i><u>CONTENTS IN ACRE FEET</u></i>		
CAPACITY WHEN FULL	2,503	
CAPACITY THIS DATE	958	
PERCENT FULL	38.27%	
FREE CAPACITY THIS DATE	1,545	
INFLOWS*	71	71
WIER FLOW	0	0
PUMPED IN	199	199
WITHDRAWALS	0	0
SPILLS	0	0
EVAPORATION*	(19)	(19)
<i><u>ELEVATION ABOVE MEAN SEA LEVEL</u></i>		
ELEVATION WHEN FULL	2,097.00	
ELEVATION THIS DATE	2,086.90	
<u>Red Draw</u>		
<i><u>CONTENTS IN ACRE FEET</u></i>		
CAPACITY WHEN FULL	8,538	
CAPACITY THIS DATE	2,141	
PERCENT FULL	25.08%	
FREE CAPACITY THIS DATE	6,397	
INFLOWS*	44	44
PUMPED IN	270	270
WITHDRAWALS	0	0
SPILLS	0	0
EVAPORATION*	(29)	(29)
<i><u>ELEVATION ABOVE MEAN SEA LEVEL</u></i>		
ELEVATION WHEN FULL	2,445.00	
ELEVATION THIS DATE	2,419.50	

**COLORADO RIVER MUNICIPAL WATER DISTRICT
 DIVERTED / WATER QUALITY ENHANCEMENT SYSTEM
 RESERVOIRS REPORT
 January 2019**

<u>Mitchell County</u>	<u>This Month</u>	<u>2019 Year-to-Date Total</u>
<u>CONTENTS IN ACRE FEET</u>		
CAPACITY WHEN FULL	27,266	
CAPACITY THIS DATE	13,827	
PERCENT FULL	50.71%	
FREE CAPACITY THIS DATE	13,439	
INFLOWS*	1,250	1,250
SPILLS	0	0
TRANSFERS IN	0	0
EVAPORATION*	(188)	(188)
<u>ELEVATION ABOVE MEAN SEA LEVEL</u>		
ELEVATION WHEN FULL	2,200.00	
ELEVATION THIS DATE	2,188.60	

Diverted / Water Quality Enhancement System Summary				
Reservoir	Elevation	Capacity	Year to Date Inflow (Acre Feet)	Year to Date Evaporation (Acre Feet)
Natural Dam	2,436.80	7,500	0	(278)
Sulphur Draw	2,527.00	851	0	(45)
Barber Lake	2,086.90	958	71	(19)
Red Draw	2,419.50	2,141	44	(29)
Mitchell County Reservoir	2,188.60	13,827	1,250	(188)
	Total	25,277	1,365	(560)

* Inflow and Evaporation are approximate.

Water Quality Diversions		
Source	Current Month (Acre Feet)	Year to Date (Acre Feet)
Colorado River	199	199
Beals Creek	36	36
	Total	235

**COLORADO RIVER MUNICIPAL WATER DISTRICT
GROUNDWATER REPORT
January 2019**

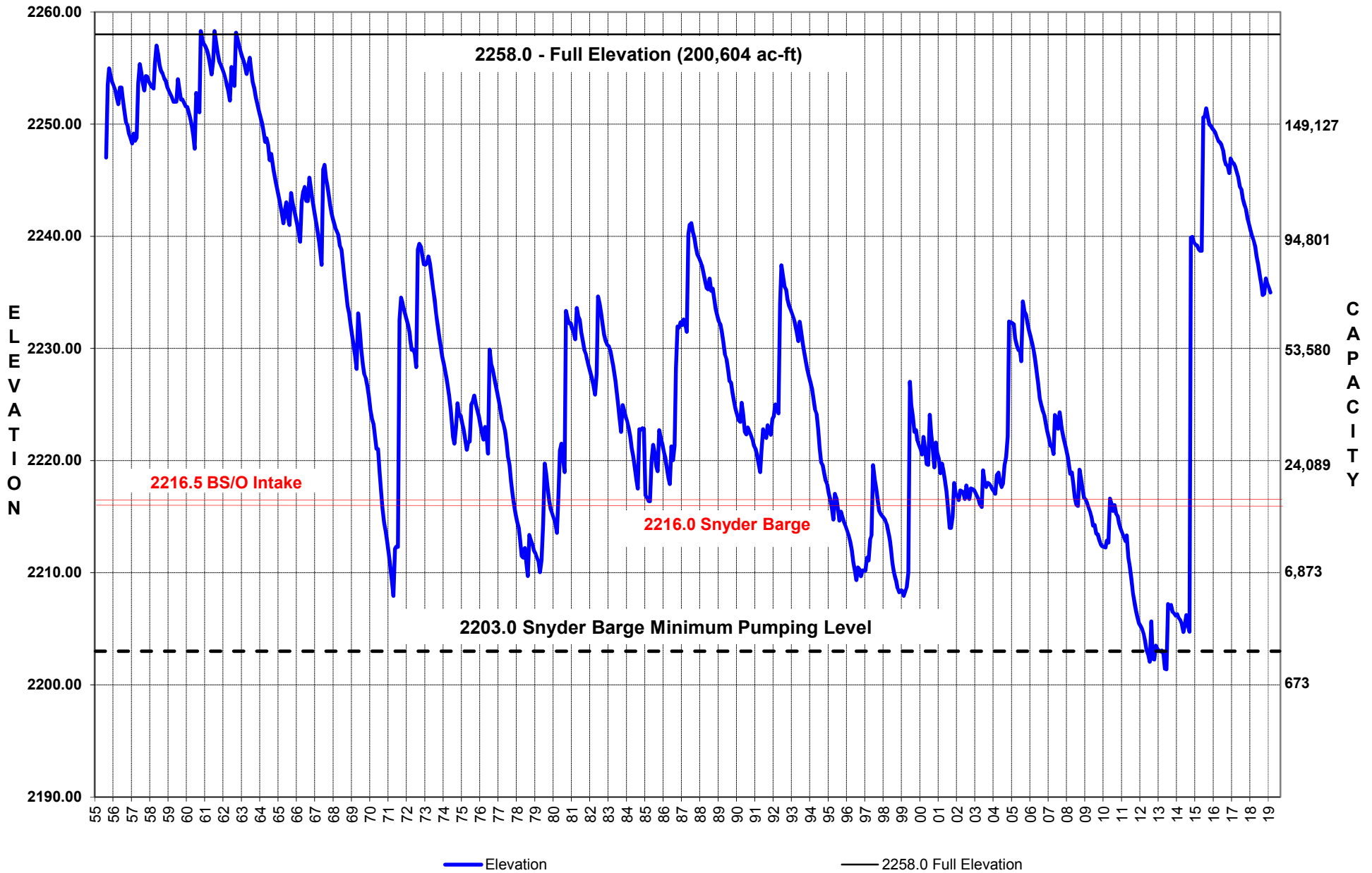
<u>Well Field</u>	<u>Production This Month (Gallons)</u>	<u>Daily Average for Month (Gal)</u>	<u>2019 Production Year-to-Date (Gallons)</u>
Ward County North Well Field	15,824,300	510,461	15,824,300
Ward County South Well Field	5,961,000	192,290	5,961,000
Odessa Well Field (Out of Service)	0	0	0
Martin County Well Field	2,430,510	78,404	2,430,510
Snyder Well Field	0	0	0
Pyote Well Field	1,543,000	49,774	1,543,000
Total	25,758,810	830,929	25,758,810

**BIG SPRING RAW WATER PRODUCTION FACILITY
PRODUCTION REPORT
January 2019**

	<u>Production This Month (Gallons)</u>	<u>Daily Average for Month (Gal)</u>	<u>2019 Production Year-to-Date (Gallons)</u>
Big Spring Raw Water Production Facility	12,660,000	408,387	12,660,000

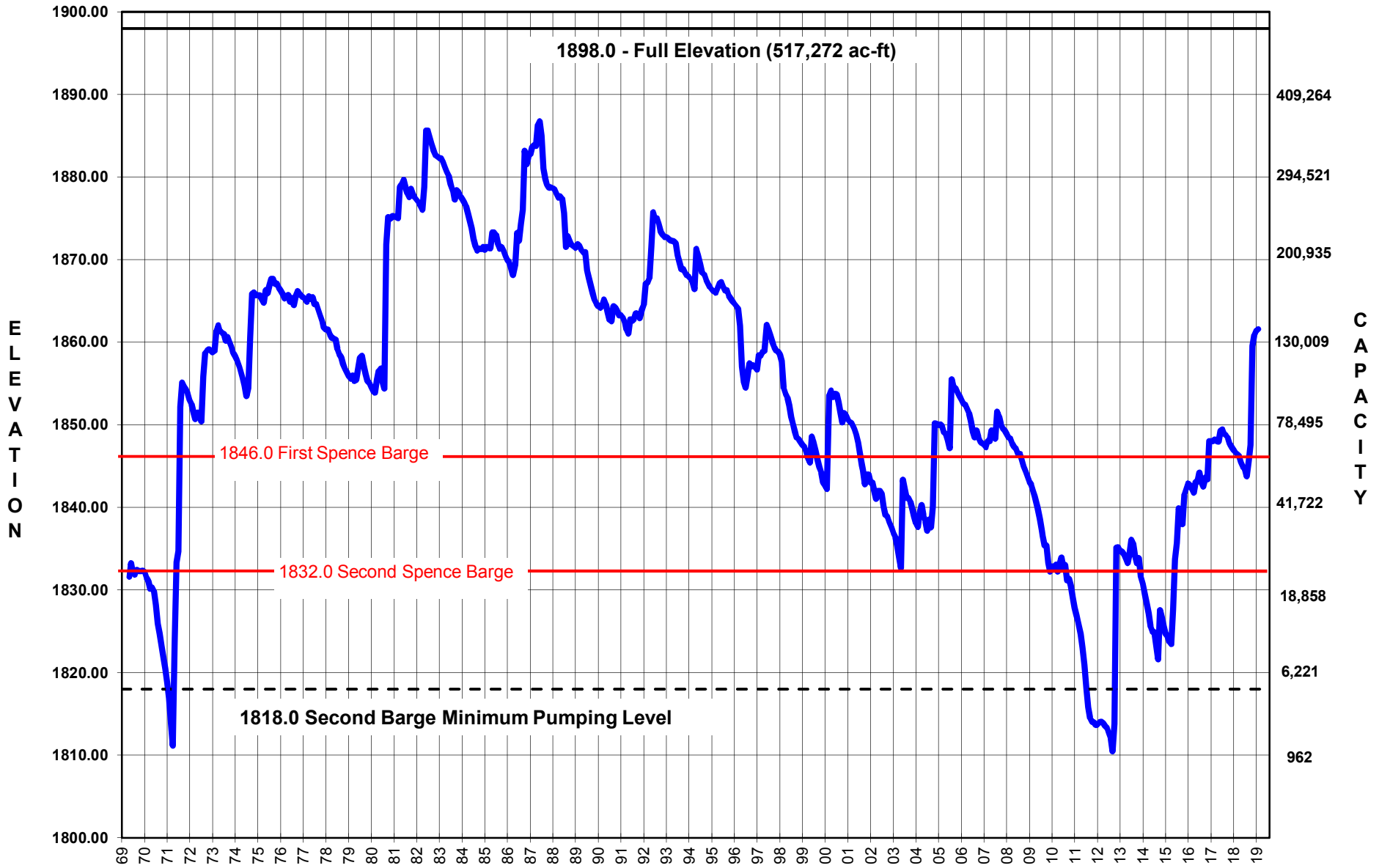
LAKE J.B. THOMAS

Elevation August 1955 - January 2019



E.V. SPENCE RESERVOIR

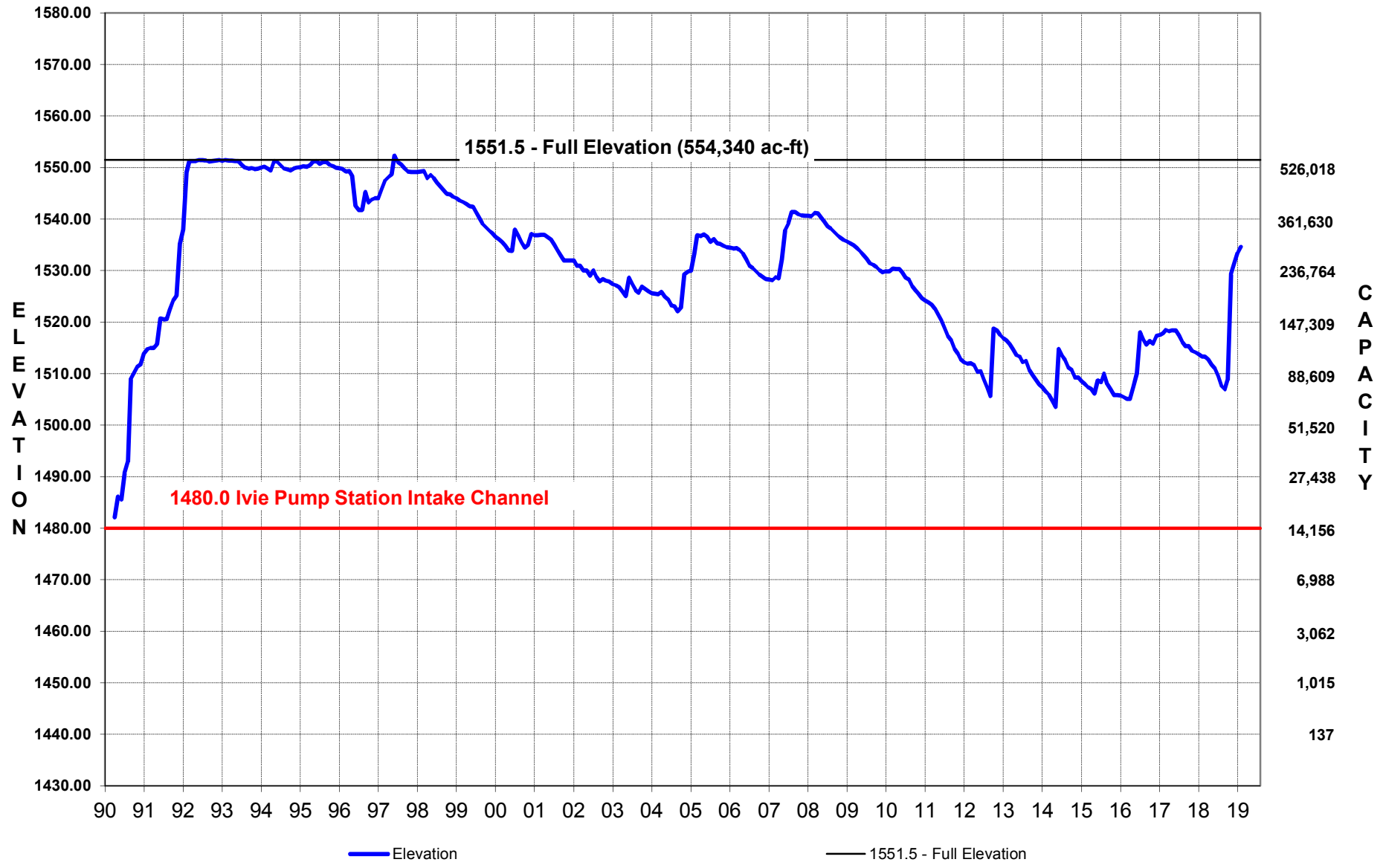
Elevation May 1969 - January 2019



— Elevation — 1898.0-Full Elevation

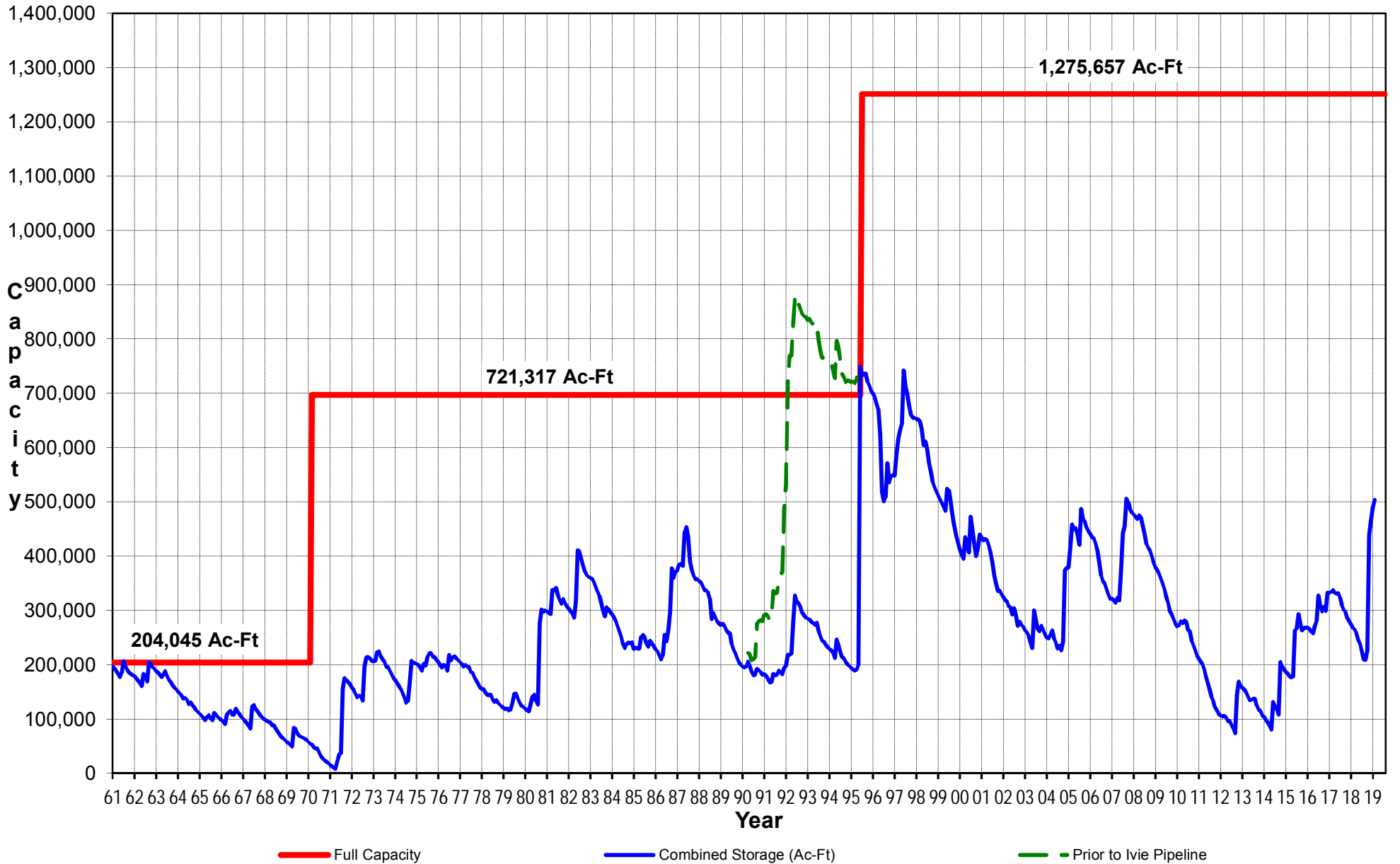
O.H. IVIE RESERVOIR

Elevation April 1990 - January 2019



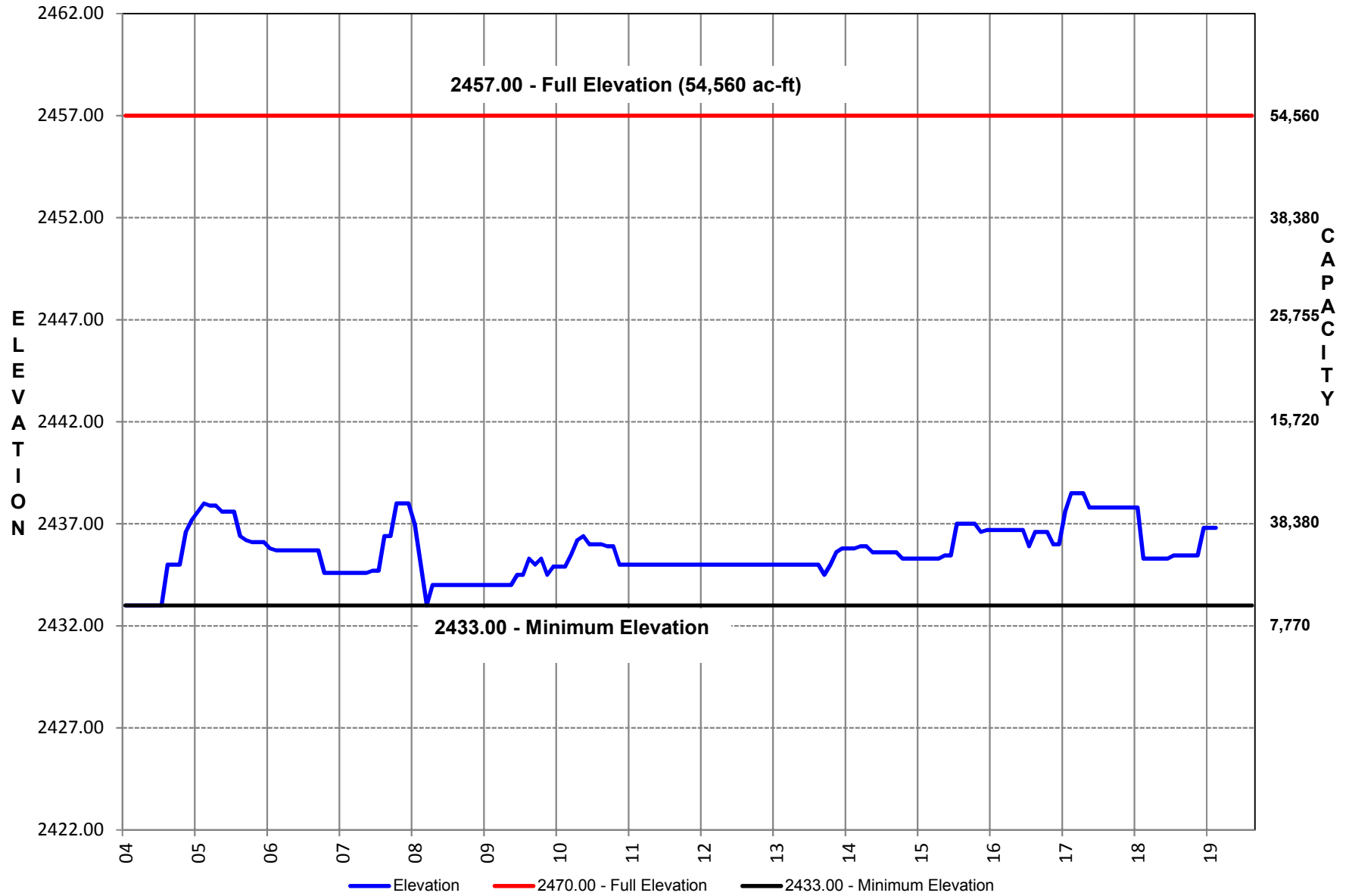
COLORADO RIVER MUNICIPAL WATER DISTRICT

COMBINED STORAGE Thomas, Spence, Moss, Ivie



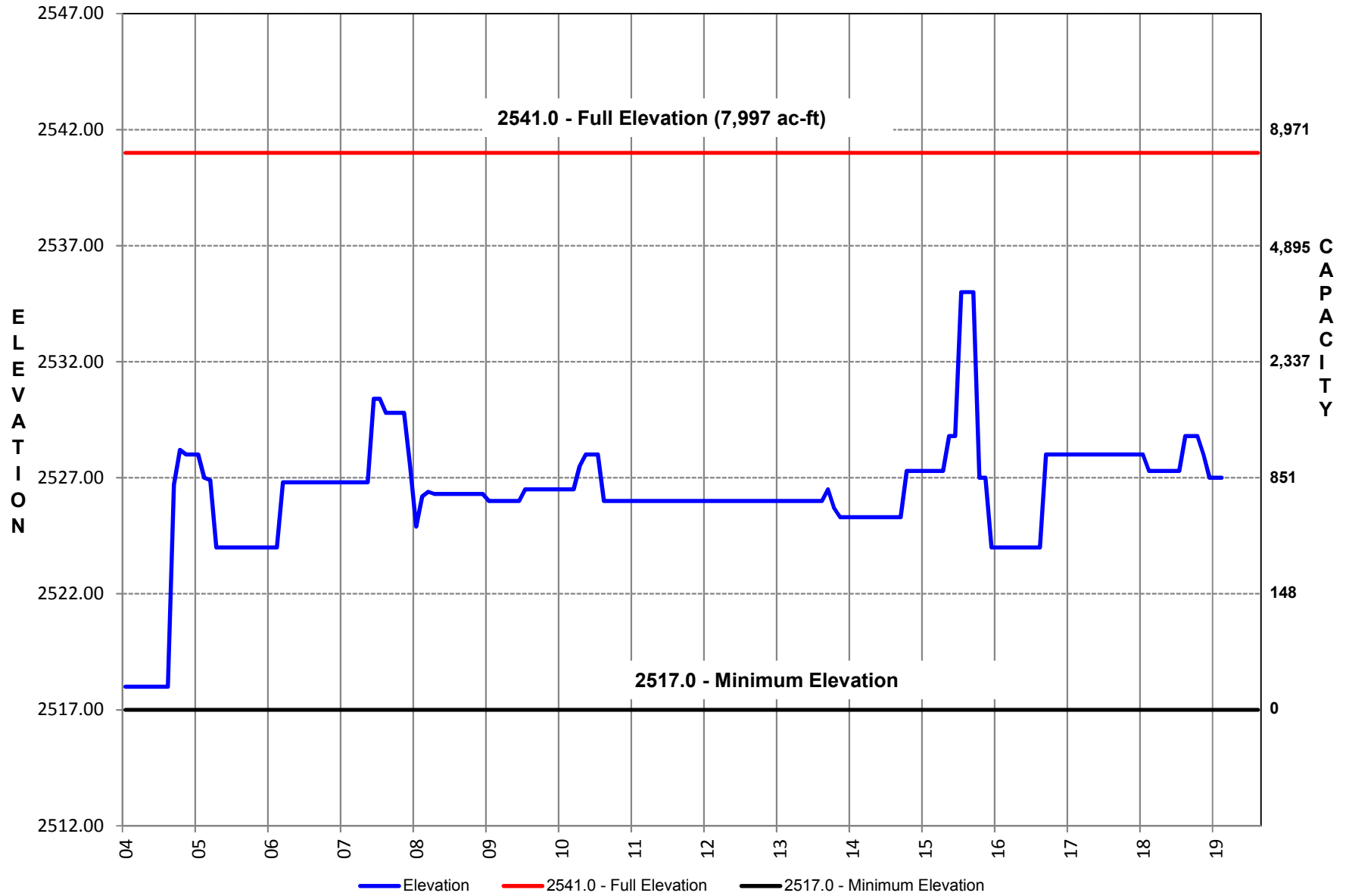
Natural Dam Reservoir

Elevation January 2004 - January 2019



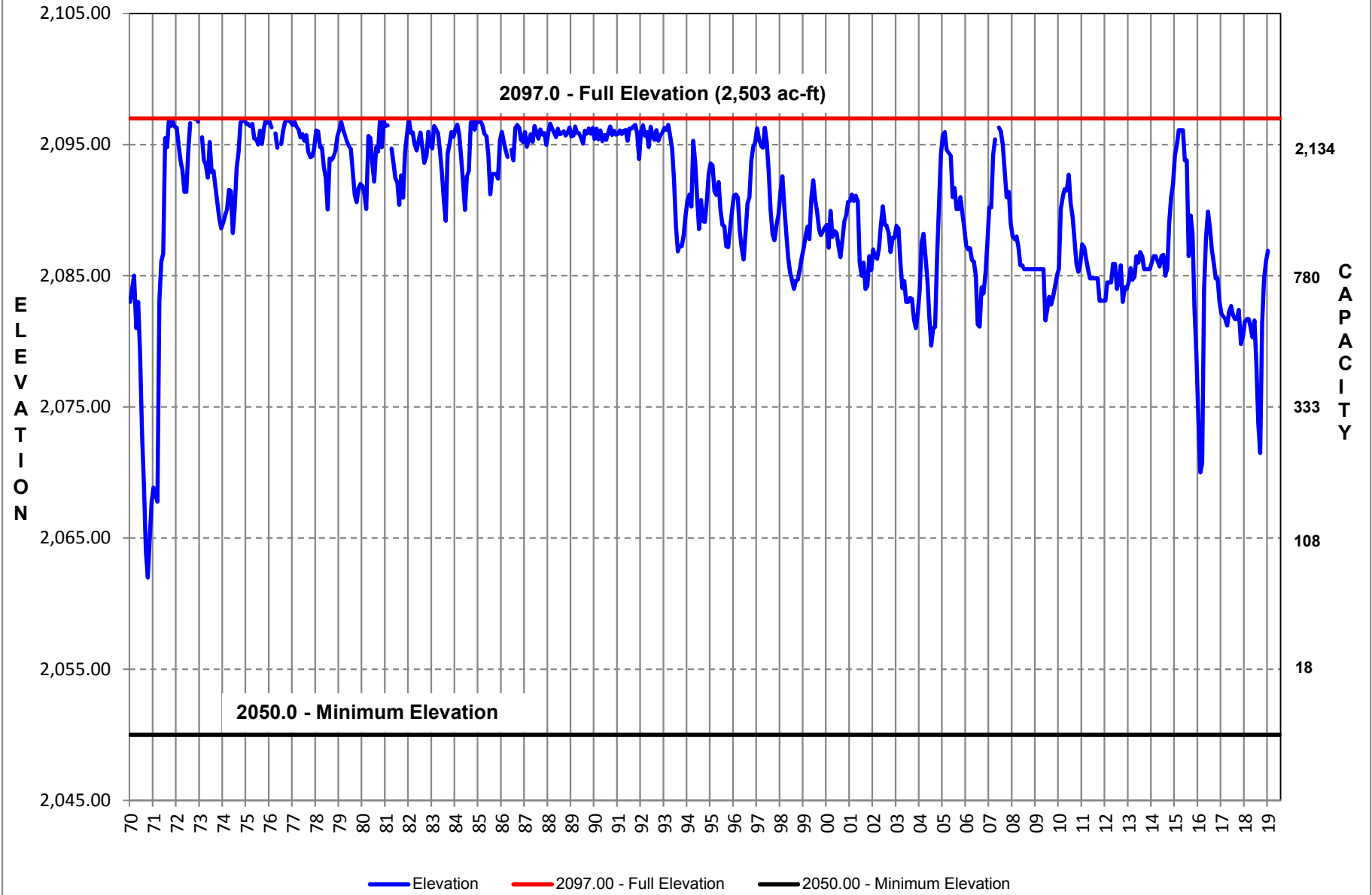
Sulphur Draw Reservoir

Elevation January 2004 - January 2019



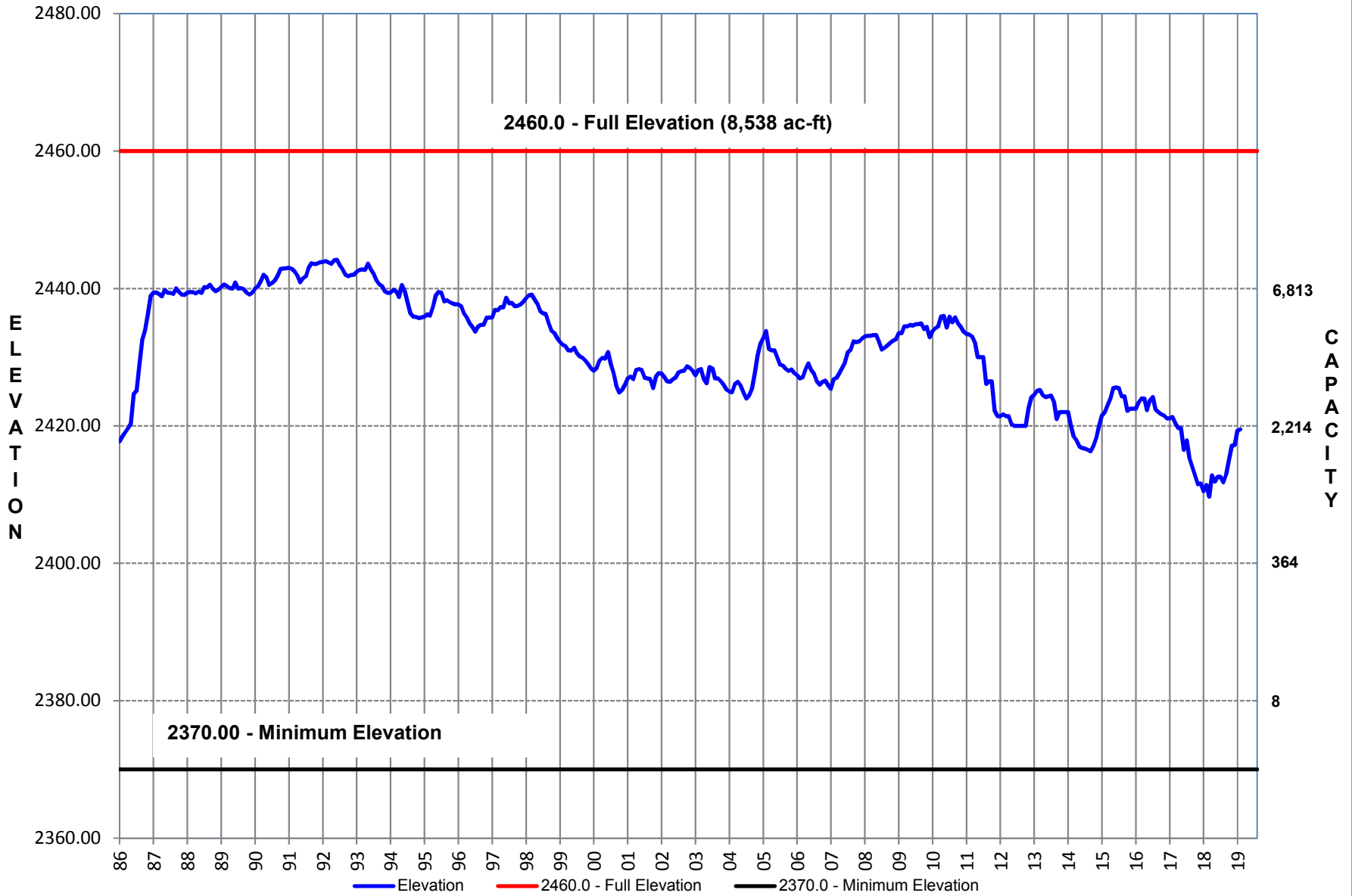
Barber Lake

Elevation February 1970 - January 2019



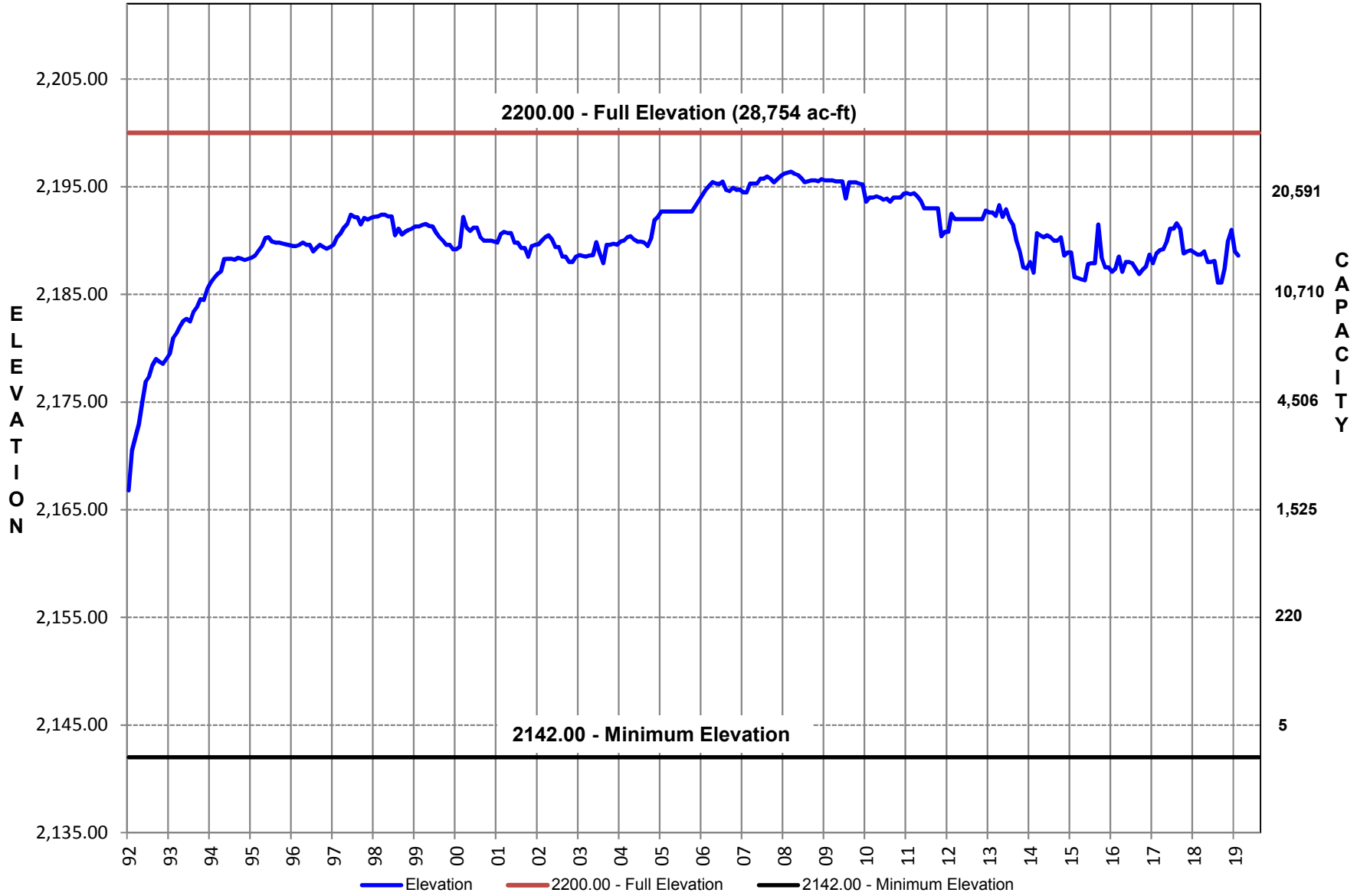
Red Draw

Elevation January 1986 - January 2019



Mitchell County Reservoir

Elevation January 1992 - January 2019



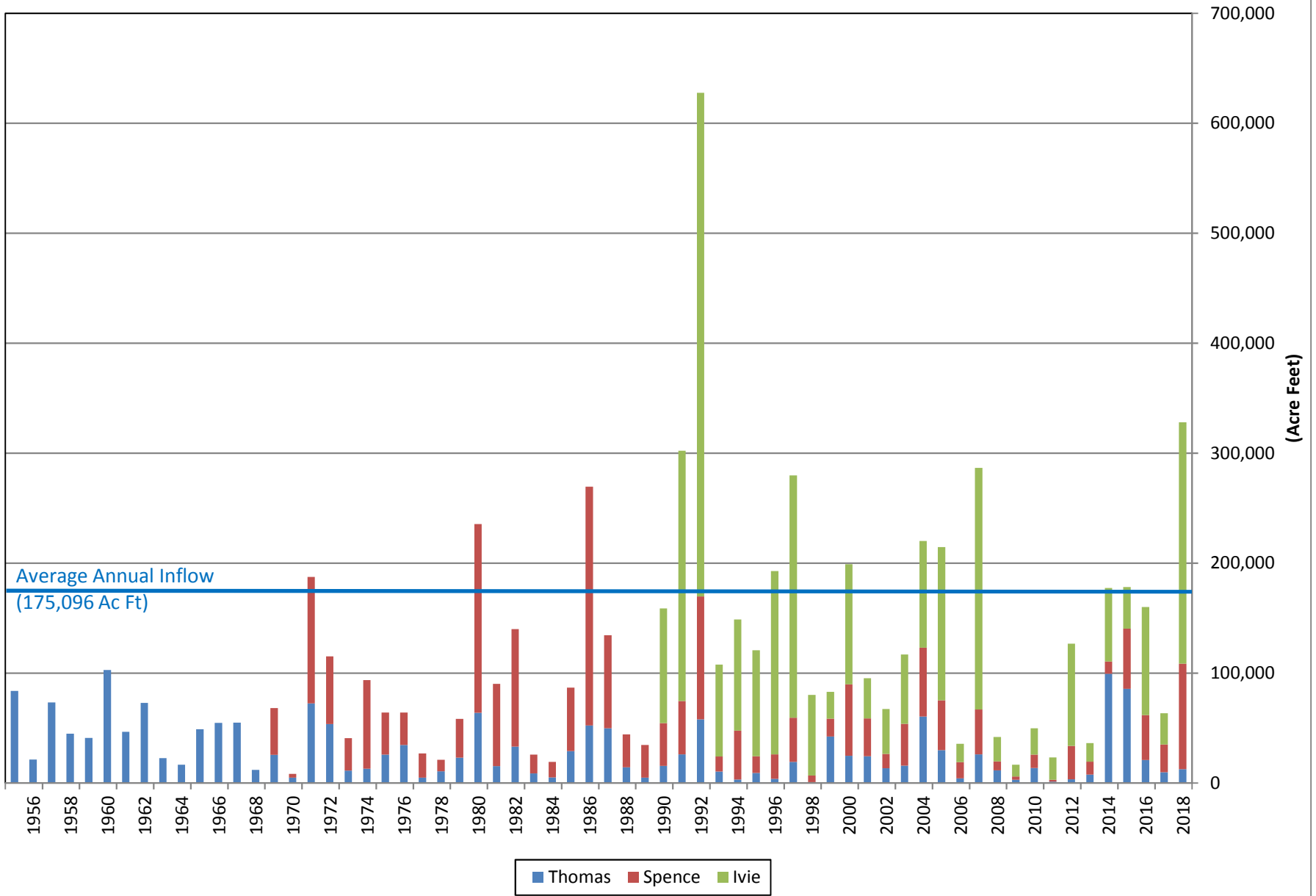
Annual Historical Data

COLORADO RIVER MUNICIPAL WATER DISTRICT

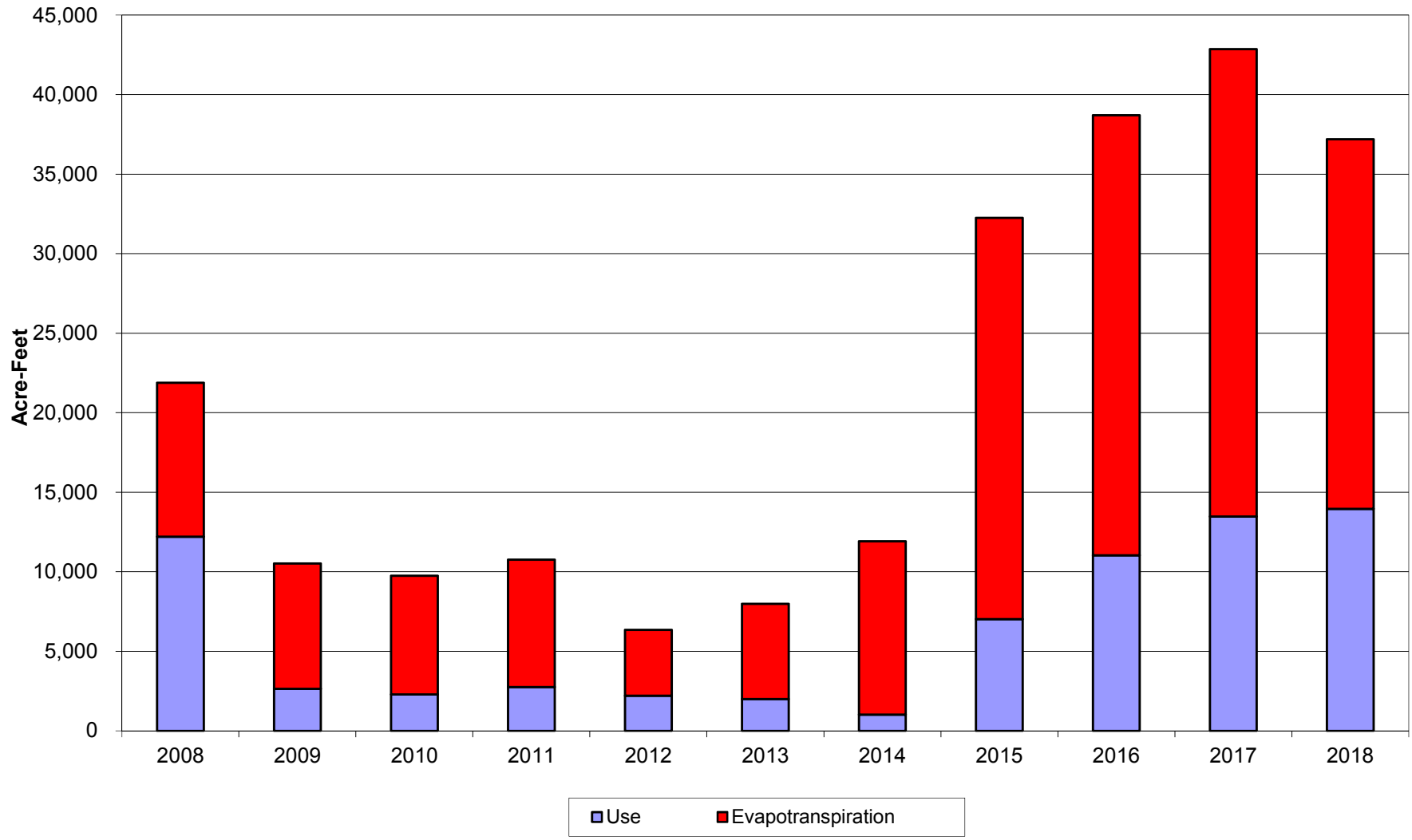
RESERVOIR INFLOW SUMMARY

Calendar Year	J.B. Thomas (AC-FT)	E.V. Spence (AC-FT)	O.H. Ivie (AC-FT)	Total (AC-FT)
2018	12,555	96,010	219,357	327,922
2017	9,768	25,255	28,405	63,428
2016	20,888	40,914	98,262	160,064
2015	85,698	54,737	37,696	178,131
2014	99,308	11,218	66,819	177,345
2013	7,739	11,754	16,824	36,317
2012	3,408	30,247	93,091	126,746
2011	1,343	1,585	20,411	23,339
2010	13,717	12,034	24,069	49,820
2009	2,901	2,996	10,659	16,556
2008	11,565	8,125	22,229	41,919
2007	26,077	40,861	219,568	286,506
2006	4,339	14,624	16,716	35,679
2005	29,804	45,367	139,349	214,520
2004	60,474	62,624	96,945	220,043
2003	15,828	38,048	62,910	116,786
2002	13,341	13,094	40,928	67,363
2001	24,294	34,528	36,355	95,177
2000	24,713	65,118	109,145	198,976
1999	42,206	16,323	24,368	82,897
1998	856	6,032	73,280	80,168
1997	19,189	40,288	220,148	279,625
1996	3,920	22,193	166,633	192,746
1995	9,176	15,140	96,358	120,674
1994	3,100	44,557	101,101	148,758
1993	10,473	13,600	83,592	107,665
1992	57,863	111,840	457,817	627,520
1991	26,110	48,525	227,569	302,204
1990	15,584	38,972	104,278	158,834
1989	4,832	29,657	-	34,489
1988	14,181	29,968	-	44,149
1987	49,818	84,582	-	134,400
1986	52,244	217,121	-	269,365
1985	29,106	57,565	-	86,671
1984	5,027	14,101	-	19,128
1983	8,661	17,236	-	25,897
1982	33,049	106,852	-	139,901
1981	15,314	74,911	-	90,225
1980	63,972	171,415	-	235,387
1979	23,011	35,366	-	58,377
1978	10,553	10,674	-	21,227
1977	4,802	22,138	-	26,940
1976	34,534	29,457	-	63,991
1975	25,897	38,081	-	63,978
1974	13,095	80,377	-	93,472
1973	11,190	29,502	-	40,692
1972	53,512	61,546	-	115,058
1971	72,391	115,082	-	187,473
1970	4,945	3,364	-	8,309
1969	25,609	42,628	-	68,237
1968	11,977	-	-	11,977
1967	54,971	-	-	54,971
1966	54,777	-	-	54,777
1965	48,975	-	-	48,975
1964	16,660	-	-	16,660
1963	22,580	-	-	22,580
1962	72,841	-	-	72,841
1961	46,456	-	-	46,456
1960	102,836	-	-	102,836
1959	41,080	-	-	41,080
1958	44,921	-	-	44,921
1957	73,285	-	-	73,285
1956	21,240	-	-	21,240
1955	83,755	-	-	83,755
Annual Average	29,818	44,765	100,513	175,096

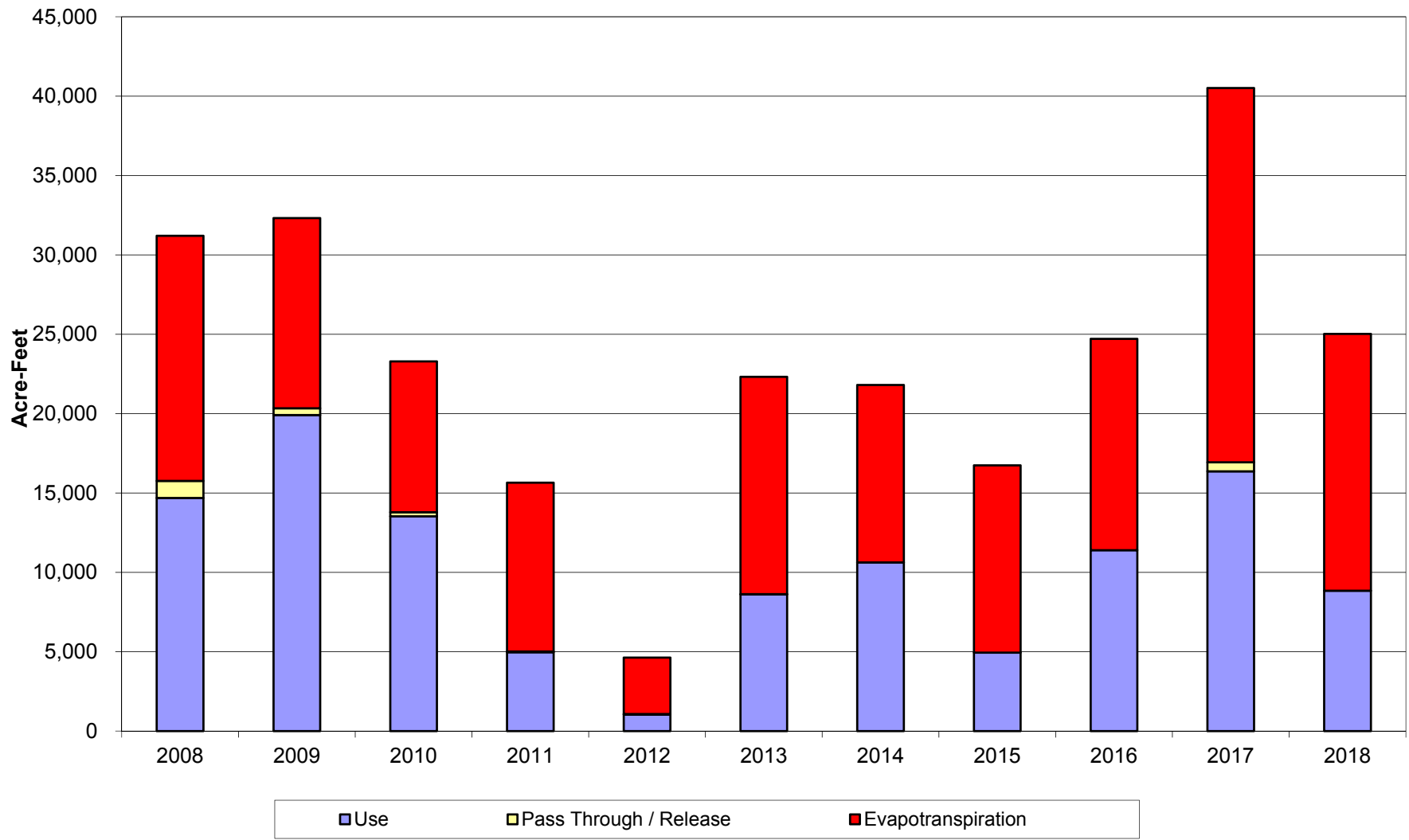
Combined Inflow (1955 through 2018)



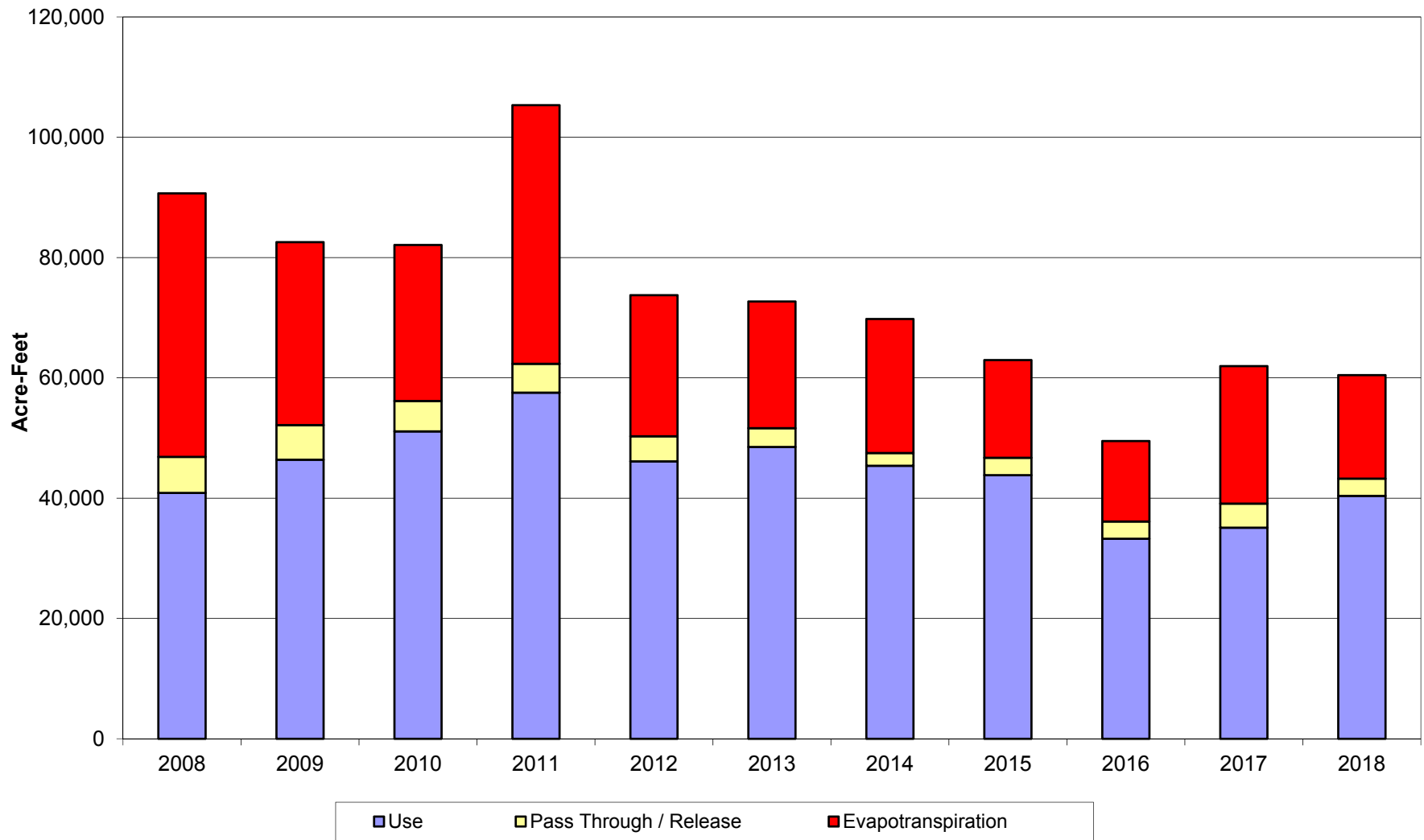
Lake J.B. Thomas
January 2008 thru December 2018



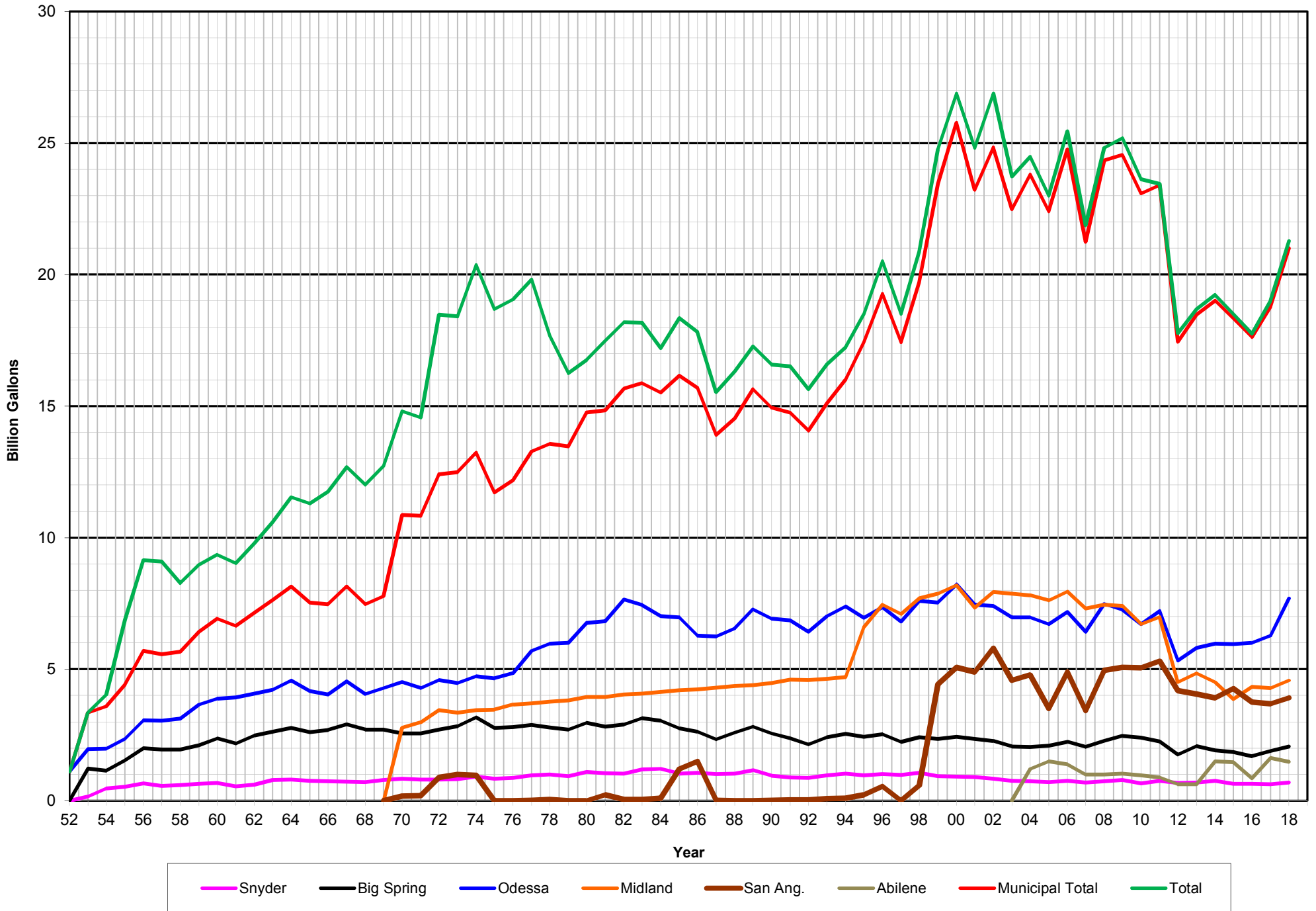
**E.V. Spence Reservoir
January 2008 thru December 2018**



O.H. Ivie Reservoir
January 2008 thru December 2018



Colorado River Municipal Water District Historical Water Delivery - FY 1952 - 2018



Colorado River Municipal Water District Source of Supply January 1962 through December 2018

