



Monthly Water Report

April 2019

COLORADO RIVER MUNICIPAL WATER DISTRICT

PO Box 869, 400 East 24th Street

Big Spring, Texas 79721-0869

**Colorado River Municipal Water District
Water Delivered
April 2019**

Raw Water System

Member Cities	Total Deliveries This Month (Gal)	Daily Average For Month (Gal)	2019 Year to Date (Gal)
Big Spring	159,885,000	5,329,500	576,307,000
Odessa	618,460,900	20,615,363	2,135,451,000
Snyder	53,443,000	1,781,433	194,484,000
Subtotal	831,788,900	27,726,297	2,906,242,000

Municipal Customers

Grandfalls	4,000	133	4,000
Midland - 1966 Contract	400,527,000	13,350,900	1,170,097,000
Midland - Ivie Contract	0	0	198,245,000
Millersview Doole WSC	41,075,300	1,369,177	143,057,000
Pyote	1,608,700	53,623	5,440,200
San Angelo - Spence	0	0	0
San Angelo - Ivie	306,771,000	10,225,700	1,004,340,000
Stanton	8,214,700	273,823	36,936,600
University Lands	0	0	6,000
West Central Texas MWD	95,678,000	3,189,267	296,093,000
Subtotal	853,878,700	28,462,623	2,854,218,800

Industrial Customers

Alon Rural Meters	2,717,930	90,598	12,182,830
Luminant Generation	2,910,000	97,000	2,910,000
Occidental	7,300	243	18,500
Parallel Petroleum	17,700	590	103,920
Power Resources	18,272,000	609,067	37,891,000
Subtotal	23,924,930	797,498	53,106,250

Diverted Water System

Industrial Customers

BASA Resources	9,501,800	316,727	34,470,400
Energen	13,400	447	68,400
Fasken Oil Co.	235,410	7,847	501,700
Miranda Energy	0	0	0
Rover Operating	27,570	919	245,910
Sheridan Production	160,260	5,342	858,450
Subtotal	9,938,440	331,281	36,144,860

Total Deliveries	1,719,530,970	57,317,699	5,849,711,910
-------------------------	----------------------	-------------------	----------------------

**COLORADO RIVER MUNICIPAL WATER DISTRICT
RESERVOIR REPORT
April 2019**

<u>Lake J. B. Thomas</u>	<u>This Month</u>	<u>2019 Year-to-Date Total</u>
<u>CONTENTS IN ACRE FEET</u>		
CAPACITY WHEN FULL	200,604	
CAPACITY THIS DATE	68,292	
PERCENT FULL	34.04%	
FREE CAPACITY THIS DATE	132,312	
INFLOWS*	1,833	2,583
PASS THROUGH / RELEASES	0	0
WITHDRAWALS	1,172	4,605
EVAPORATION*	(1,369)	(5,462)

<u>ELEVATION ABOVE MEAN SEA LEVEL</u>		
ELEVATION WHEN FULL	2,258.00	
ELEVATION THIS DATE	2,233.93	

E. V. Spence Reservoir

<u>CONTENTS IN ACRE FEET</u>		
CAPACITY WHEN FULL	517,272	
CAPACITY THIS DATE	141,681	
PERCENT FULL	27.39%	
FREE CAPACITY THIS DATE	375,591	
INFLOWS*	4,407	9,053
PASS THROUGH / RELEASES	0	0
WITHDRAWALS	1,267	2,584
EVAPORATION*	(1,025)	(3,913)

<u>ELEVATION ABOVE MEAN SEA LEVEL</u>		
ELEVATION WHEN FULL	1,898.00	
ELEVATION THIS DATE	1,861.87	

**COLORADO RIVER MUNICIPAL WATER DISTRICT
RESERVOIR REPORT
April 2019**

	<u>This Month</u>	<u>2019 Year-to-Date Total</u>
<u>O. H. Ivie Reservoir</u>		
<i><u>CONTENTS IN ACRE FEET</u></i>		
CAPACITY WHEN FULL	554,340	
CAPACITY THIS DATE	319,444	
PERCENT FULL	57.63%	
FREE CAPACITY THIS DATE	234,896	
INFLOWS*	21,079	56,989
PASS THROUGH / RELEASES	153	667
WITHDRAWALS	3,129	11,983
SPILLS	0	0
EVAPORATION*	(1,854)	(3,343)
<i><u>ELEVATION ABOVE MEAN SEA LEVEL</u></i>		
ELEVATION WHEN FULL	1,551.50	
ELEVATION THIS DATE	1,536.94	

Moss Creek Lake

<i><u>CONTENTS IN ACRE FEET</u></i>		
CAPACITY WHEN FULL	3,441	
CAPACITY THIS DATE	1,887	
PERCENT FULL	54.84%	
FREE CAPACITY THIS DATE	1,554	
INFLOWS*	174	469
PASS THROUGH / RELEASES	0	0
WITHDRAWALS	(495)	(1,086)
SPILLS	0	0
EVAPORATION*	(62)	(122)
<i><u>ELEVATION ABOVE MEAN SEA LEVEL</u></i>		
ELEVATION WHEN FULL	2,336.50	
ELEVATION THIS DATE	2,325.44	

Reservoir Summary						
Reservoir	Elevation	Current Capacity (Acre Feet)	Year to Date Inflow (Acre Feet)	Year to Date Withdrawals (Acre Feet)	Year to Date Pass Through / Releases (Acre Feet)	Year to Date Evaporation (Acre Feet)
Lake J.B. Thomas	2,233.93	68,292	2,583	4,605	0	(5,462)
E.V. Spence Reservoir	1,861.87	141,681	9,053	2,584	0	(3,913)
O.H. Ivie Reservoir	1,536.94	319,444	56,989	11,983	667	(3,343)
Moss Creek Lake	2,325.44	1,887	469	(1,086)	0	(122)
	Total	531,304	69,094	18,086	667	(12,840)

* Inflow and Evaporation are approximate.

**COLORADO RIVER MUNICIPAL WATER DISTRICT
 DIVERTED / WATER QUALITY ENHANCEMENT SYSTEM
 RESERVOIRS REPORT
 April 2019**

	<u>This Month</u>	<u>2019 Year-to-Date Total</u>
<u>Natural Dam</u>		
<i><u>CONTENTS IN ACRE FEET</u></i>		
CAPACITY WHEN FULL	54,560	
CAPACITY THIS DATE	7,500	
PERCENT FULL	13.75%	
FREE CAPACITY THIS DATE	47,060	
INFLOWS*	0	0
SPILLS	0	0
EVAPORATION*	(737)	(1,918)
<i><u>ELEVATION ABOVE MEAN SEA LEVEL</u></i>		
ELEVATION WHEN FULL	2,457.00	
ELEVATION THIS DATE	2,436.80	
<u>Sulphur Draw Reservoir</u>		
<i><u>CONTENTS IN ACRE FEET</u></i>		
CAPACITY WHEN FULL	7,997	
CAPACITY THIS DATE	851	
PERCENT FULL	10.64%	
FREE CAPACITY THIS DATE	7,146	
INFLOWS*	0	0
PASS THROUGH / RELEASES	0	0
EVAPORATION*	(120)	(312)
<i><u>ELEVATION ABOVE MEAN SEA LEVEL</u></i>		
ELEVATION WHEN FULL	2,541.00	
ELEVATION THIS DATE	2,527.00	

**COLORADO RIVER MUNICIPAL WATER DISTRICT
 DIVERTED / WATER QUALITY ENHANCEMENT SYSTEM
 RESERVOIRS REPORT
 April 2019**

	<u>This Month</u>	<u>2019 Year-to-Date Total</u>
<u>Barber Lake</u>		
<i><u>CONTENTS IN ACRE FEET</u></i>		
CAPACITY WHEN FULL	2,503	
CAPACITY THIS DATE	1,441	
PERCENT FULL	57.57%	
FREE CAPACITY THIS DATE	1,062	
INFLOWS*	98	359
WIER FLOW	8	8
PUMPED IN	408	1,012
WITHDRAWALS	16	16
SPILLS	0	0
EVAPORATION*	(73)	(167)
<i><u>ELEVATION ABOVE MEAN SEA LEVEL</u></i>		
ELEVATION WHEN FULL	2,097.00	
ELEVATION THIS DATE	2,090.70	
 <u>Red Draw</u>		
<i><u>CONTENTS IN ACRE FEET</u></i>		
CAPACITY WHEN FULL	8,538	
CAPACITY THIS DATE	2,229	
PERCENT FULL	26.11%	
FREE CAPACITY THIS DATE	6,309	
INFLOWS*	21	195
PUMPED IN	8	698
WITHDRAWALS	0	0
SPILLS	0	0
EVAPORATION*	(79)	(205)
<i><u>ELEVATION ABOVE MEAN SEA LEVEL</u></i>		
ELEVATION WHEN FULL	2,445.00	
ELEVATION THIS DATE	2,420.10	

**COLORADO RIVER MUNICIPAL WATER DISTRICT
 DIVERTED / WATER QUALITY ENHANCEMENT SYSTEM
 RESERVOIRS REPORT
 April 2019**

<u>Mitchell County</u>	<u>This Month</u>	<u>2019 Year-to-Date Total</u>
<u>CONTENTS IN ACRE FEET</u>		
CAPACITY WHEN FULL	27,266	
CAPACITY THIS DATE	13,276	
PERCENT FULL	48.69%	
FREE CAPACITY THIS DATE	13,990	
INFLOWS*	1,240	2,582
SPILLS	0	0
TRANSFERS IN	(2)	(2)
EVAPORATION*	(482)	(1,275)
<u>ELEVATION ABOVE MEAN SEA LEVEL</u>		
ELEVATION WHEN FULL	2,200.00	
ELEVATION THIS DATE	2,188.00	

Diverted / Water Quality Enhancement System Summary				
Reservoir	Elevation	Capacity	Year to Date Inflow (Acre Feet)	Year to Date Evaporation (Acre Feet)
Natural Dam	2,436.80	7,500	0	(1,918)
Sulphur Draw	2,527.00	851	0	(312)
Barber Lake	2,090.70	1,441	359	(167)
Red Draw	2,420.10	2,229	195	(205)
Mitchell County Reservoir	2,188.00	13,276	2,582	(1,275)
Total		25,297	3,136	(3,877)

* Inflow and Evaporation are approximate.

Water Quality Diversions		
Source	Current Month (Acre Feet)	Year to Date (Acre Feet)
Colorado River	408	1,012
Beals Creek	19	117
Total	427	1,130

**COLORADO RIVER MUNICIPAL WATER DISTRICT
GROUNDWATER REPORT
April 2019**

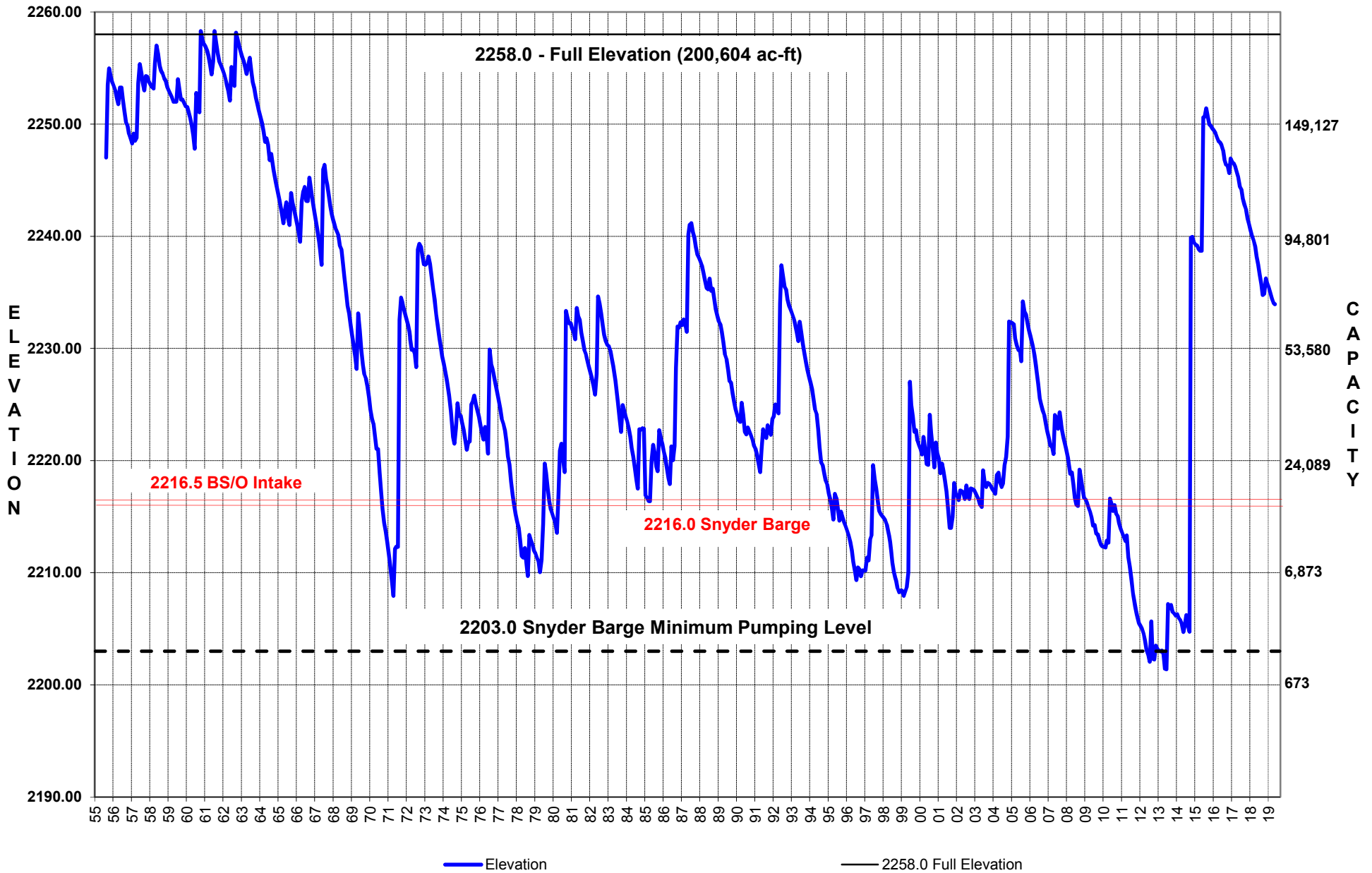
<u>Well Field</u>	<u>Production This Month (Gallons)</u>	<u>Daily Average for Month (Gal)</u>	<u>2019 Production Year-to-Date (Gallons)</u>
Ward County North Well Field	63,216,300	2,107,210	115,592,200
Ward County South Well Field	4,501,000	150,033	21,719,000
Odessa Well Field (Out of Service)	0	0	0
Martin County Well Field	3,254,080	108,469	11,265,460
Snyder Well Field	0	0	0
Pyote Well Field	1,935,000	64,500	6,734,000
Total	72,906,380	2,430,213	155,310,660

**BIG SPRING RAW WATER PRODUCTION FACILITY
PRODUCTION REPORT
April 2019**

	<u>Production This Month (Gallons)</u>	<u>Daily Average for Month (Gal)</u>	<u>2019 Production Year-to-Date (Gallons)</u>
Big Spring Raw Water Production Facility	32,250,000	1,075,000	44,910,000

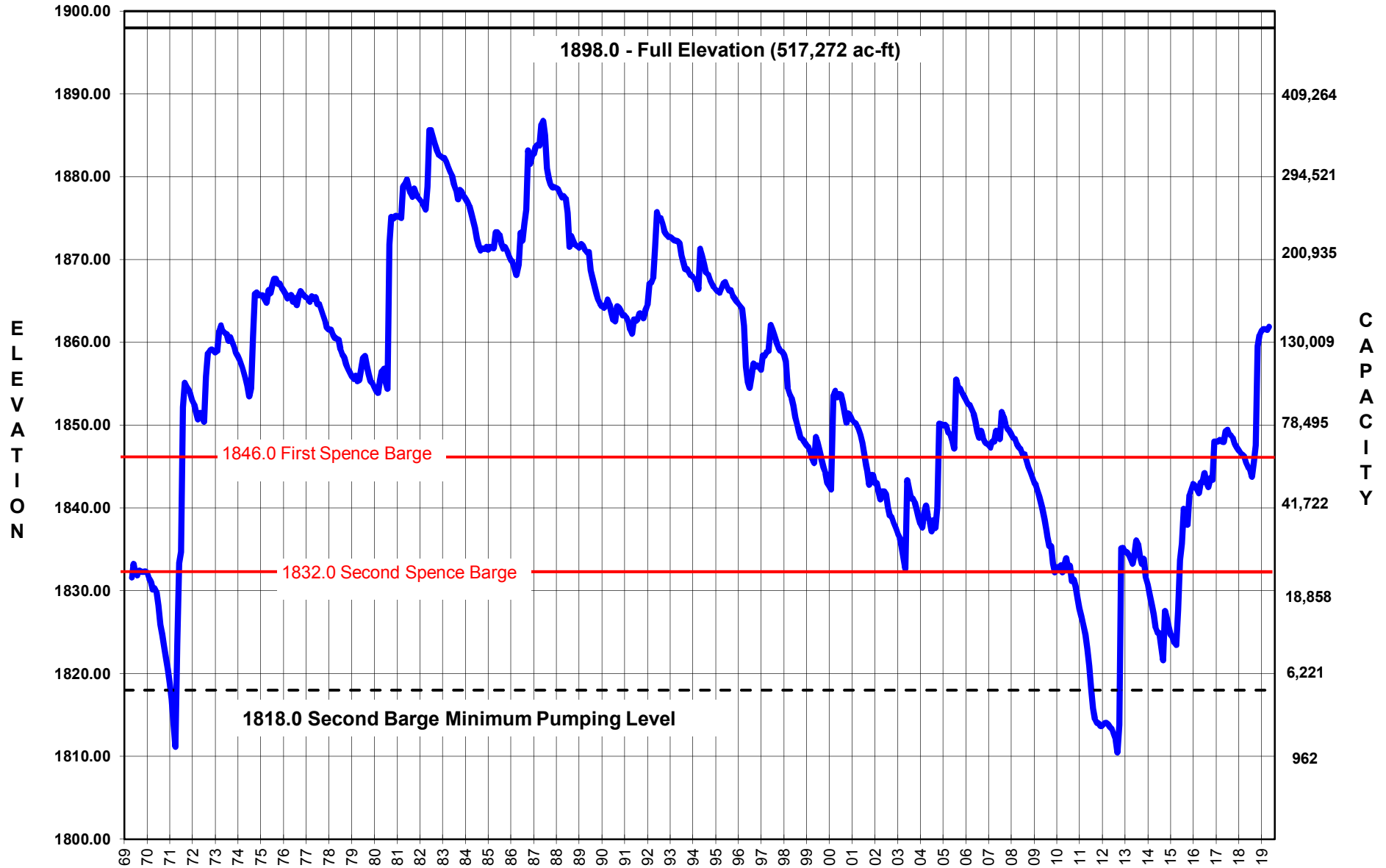
LAKE J.B. THOMAS

Elevation August 1955 - April 2019



E.V. SPENCE RESERVOIR

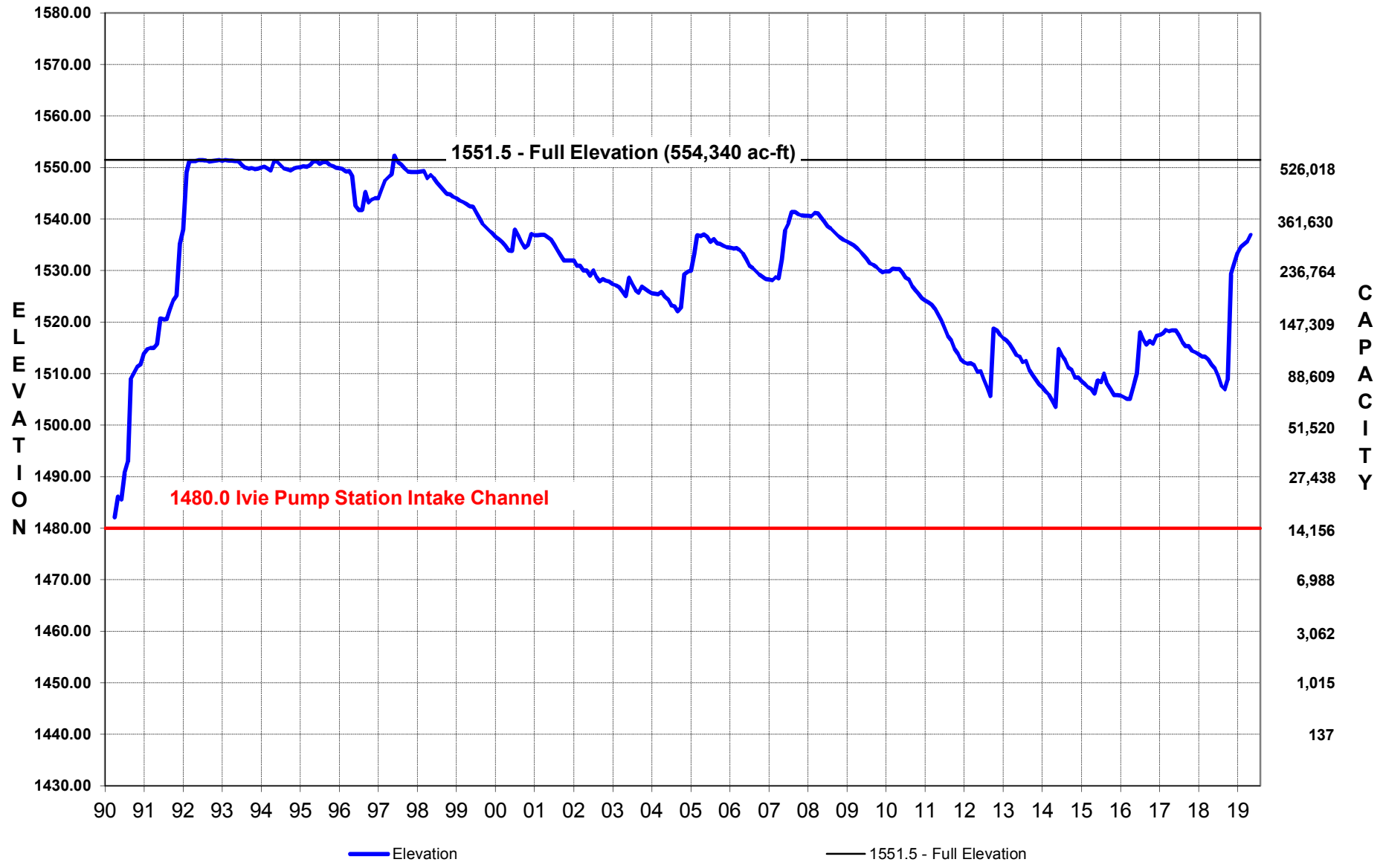
Elevation May 1969 - April 2019



— Elevation — 1898.0-Full Elevation

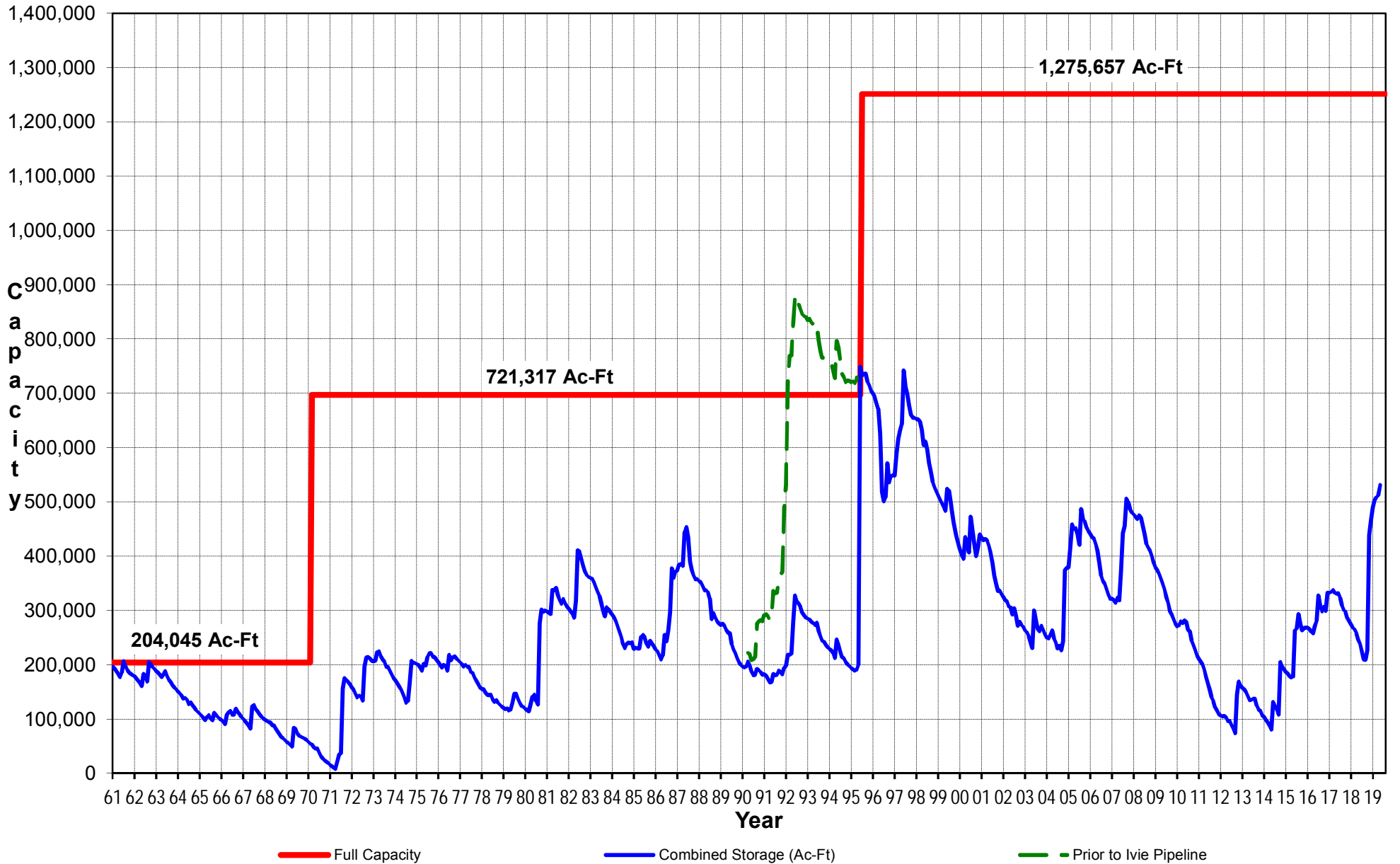
O.H. IVIE RESERVOIR

Elevation April 1990 - April 2019



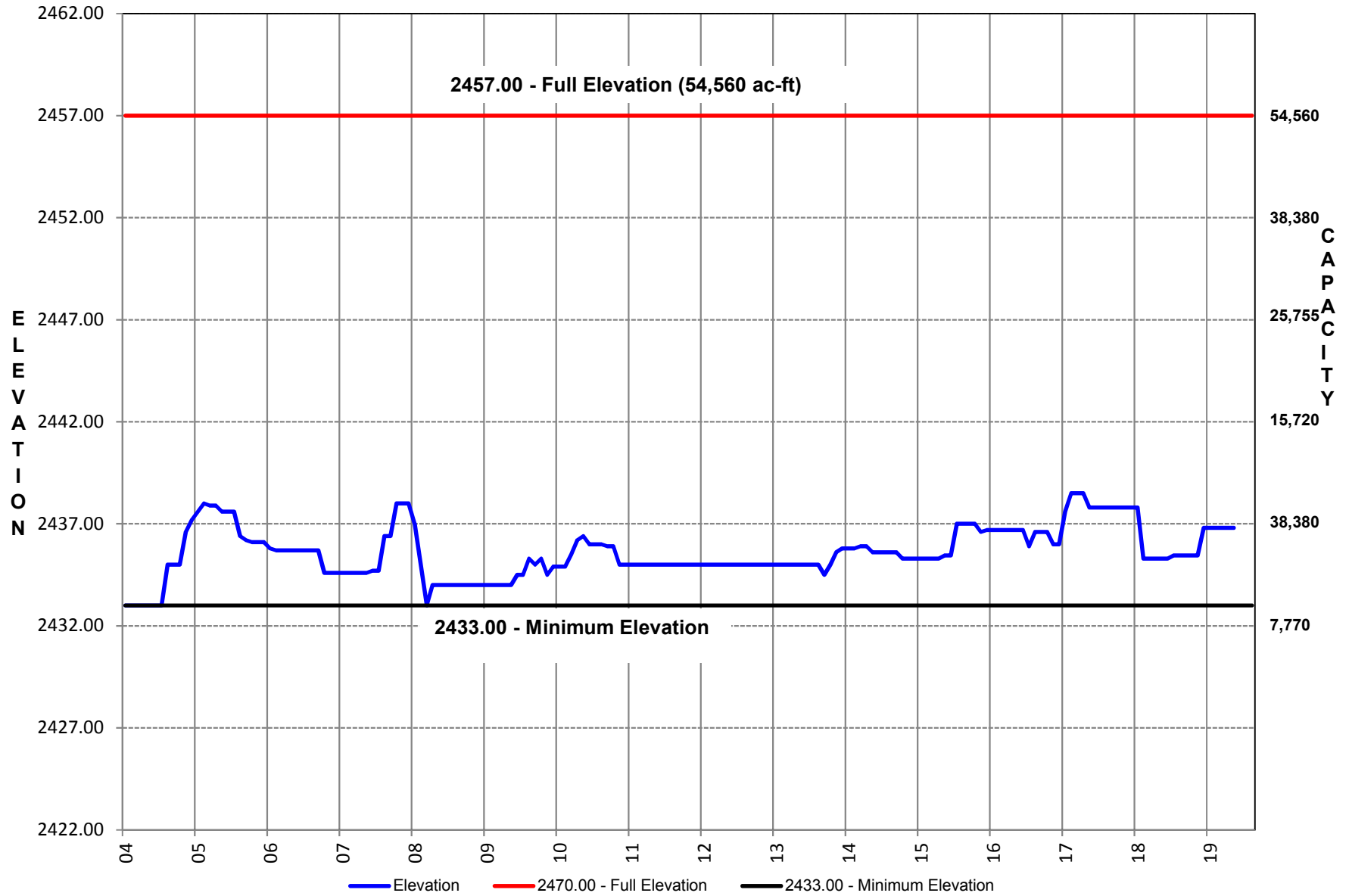
COLORADO RIVER MUNICIPAL WATER DISTRICT

COMBINED STORAGE Thomas, Spence, Moss, Ivie



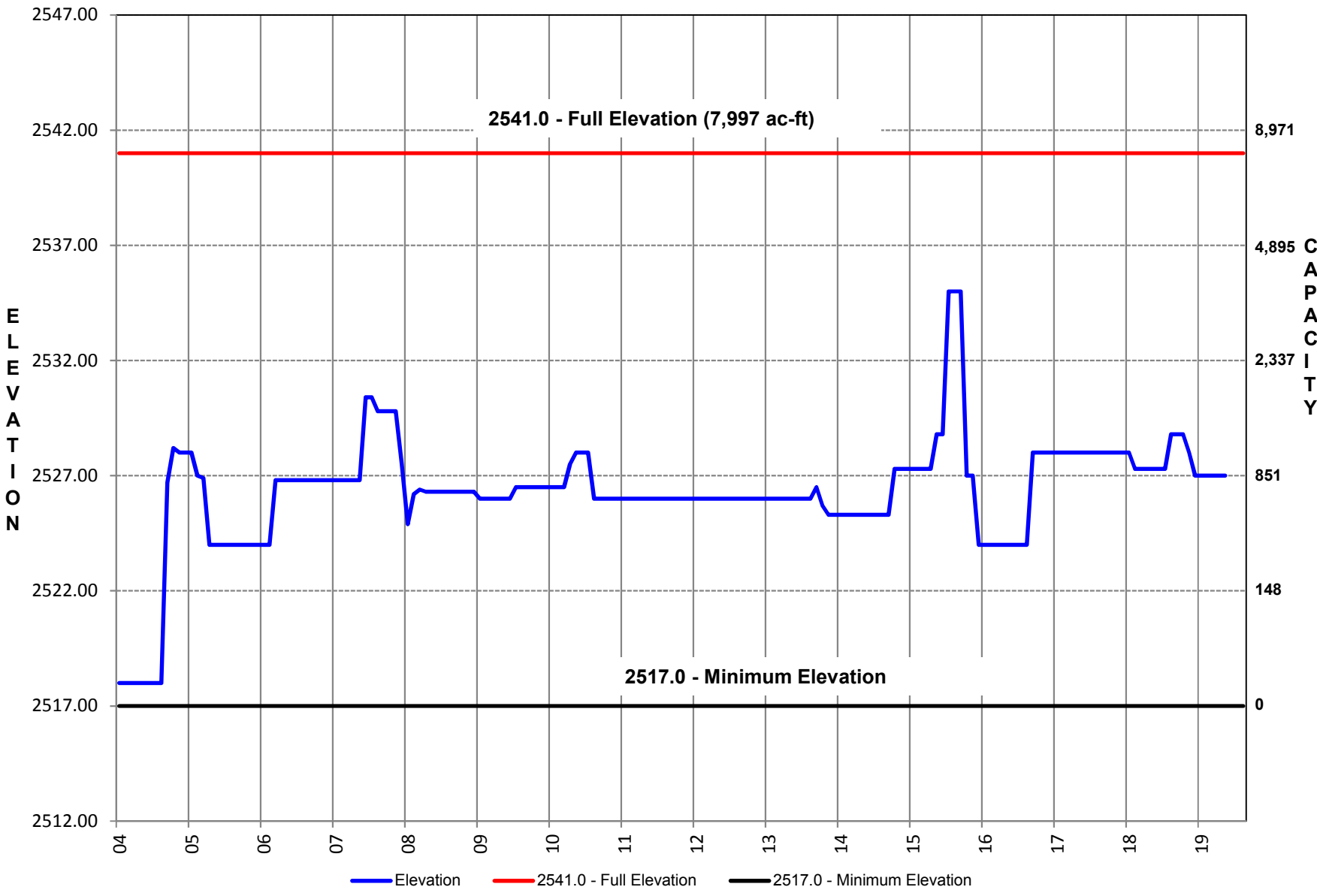
Natural Dam Reservoir

Elevation January 2004 - April 2019



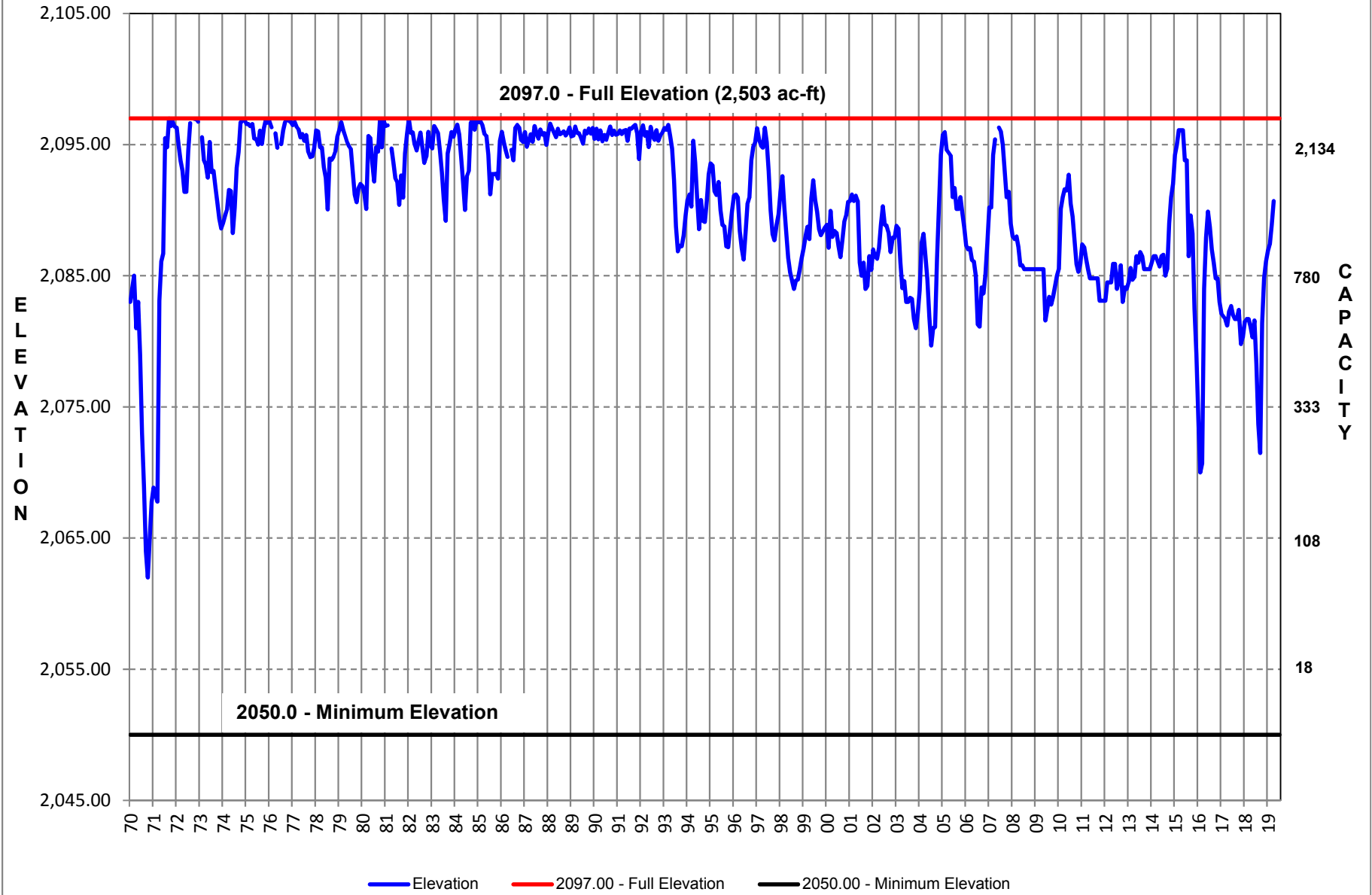
Sulphur Draw Reservoir

Elevation January 2004 - April 2019



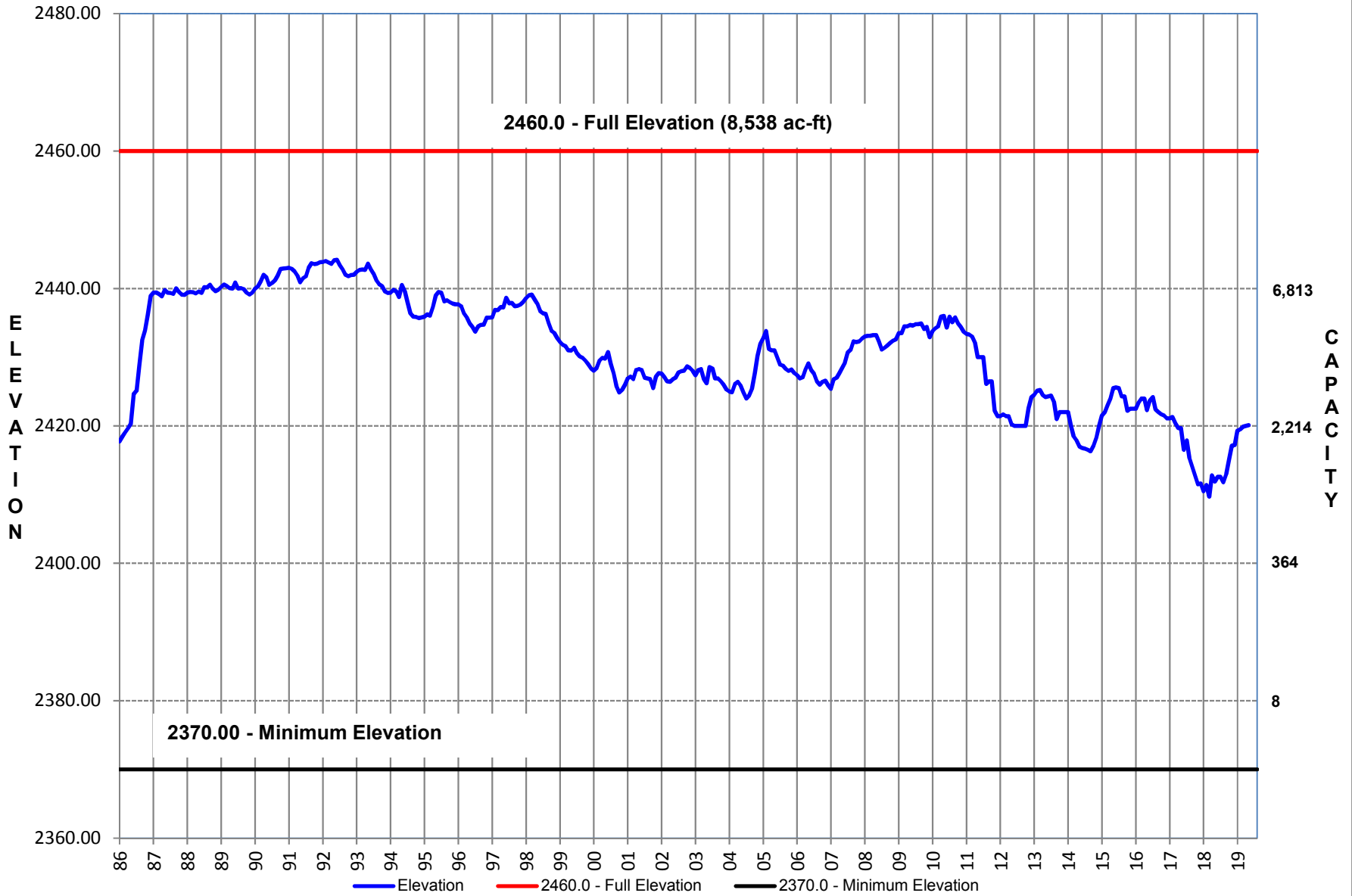
Barber Lake

Elevation February 1970 - April 2019



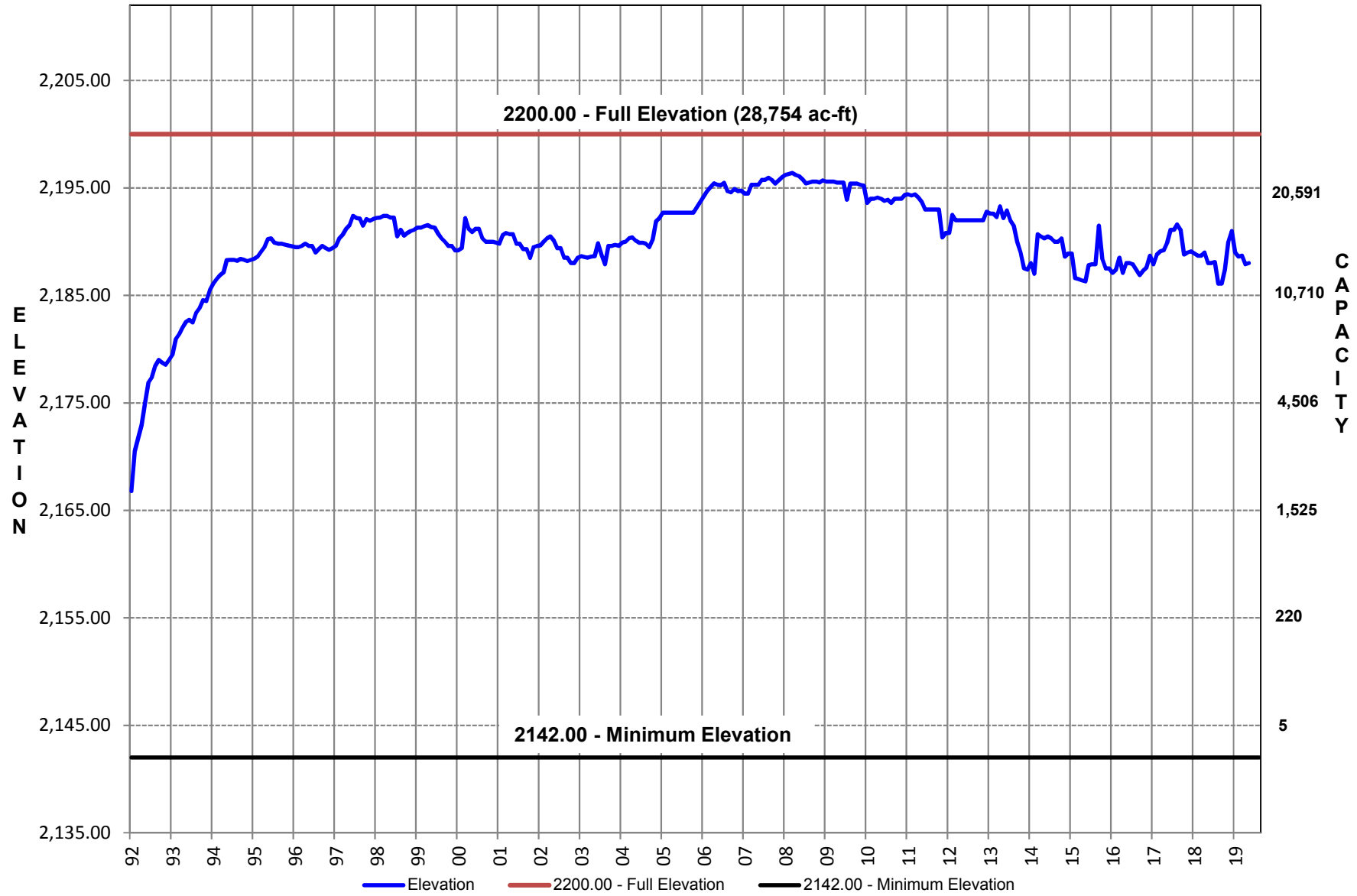
Red Draw

Elevation January 1986 - April 2019



Mitchell County Reservoir

Elevation January 1992 - April 2019



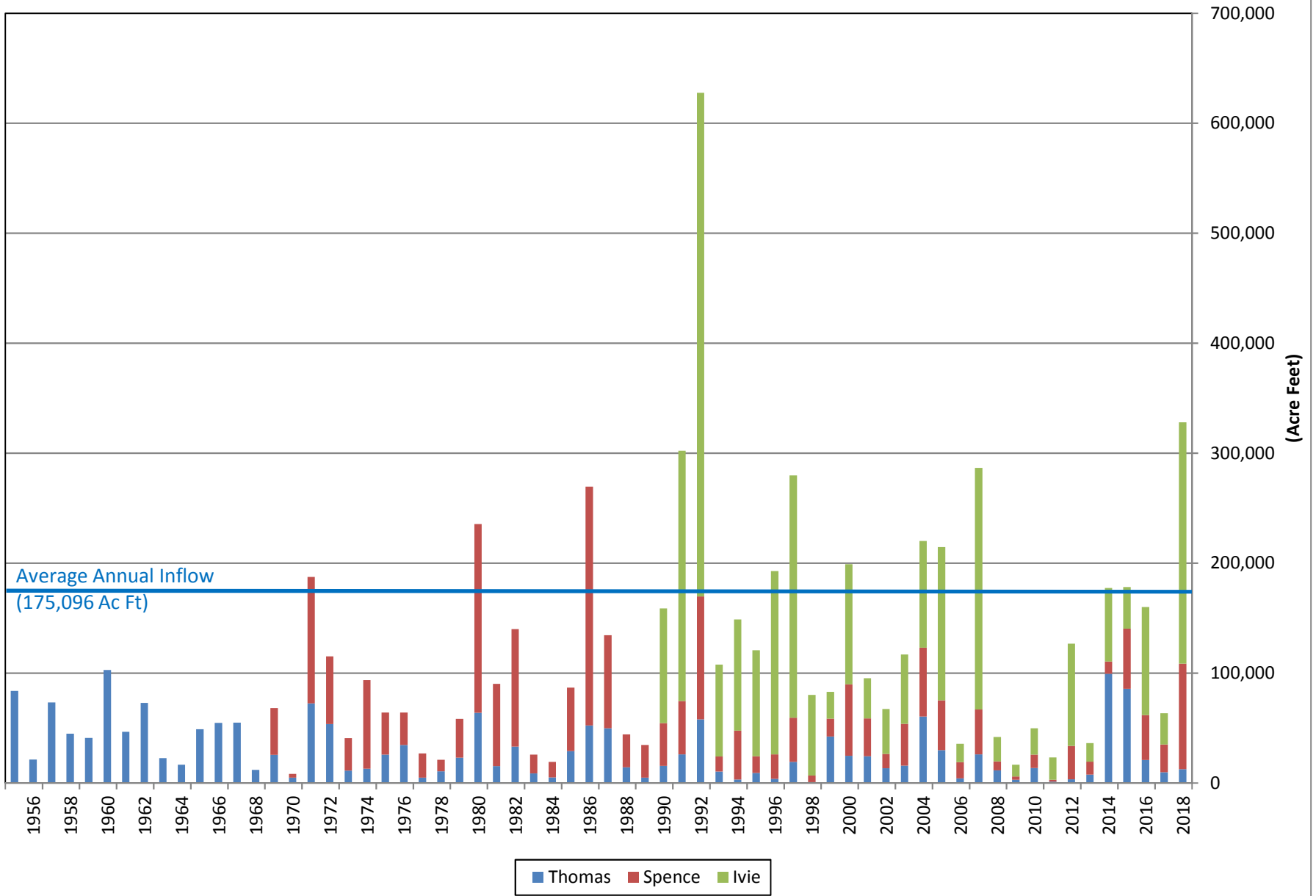
Annual Historical Data

COLORADO RIVER MUNICIPAL WATER DISTRICT

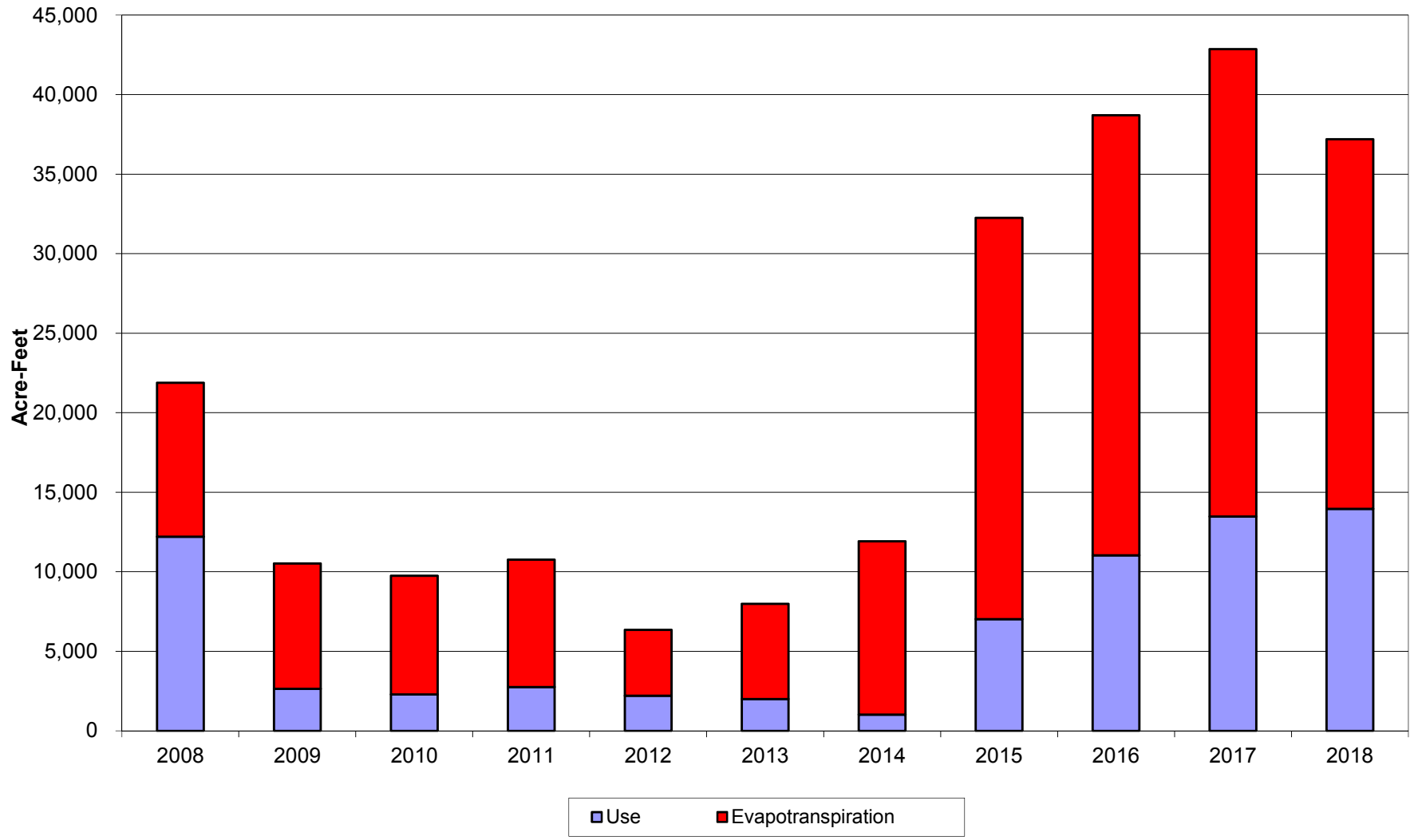
RESERVOIR INFLOW SUMMARY

Calendar Year	J.B. Thomas (AC-FT)	E.V. Spence (AC-FT)	O.H. Ivie (AC-FT)	Total (AC-FT)
2018	12,555	96,010	219,357	327,922
2017	9,768	25,255	28,405	63,428
2016	20,888	40,914	98,262	160,064
2015	85,698	54,737	37,696	178,131
2014	99,308	11,218	66,819	177,345
2013	7,739	11,754	16,824	36,317
2012	3,408	30,247	93,091	126,746
2011	1,343	1,585	20,411	23,339
2010	13,717	12,034	24,069	49,820
2009	2,901	2,996	10,659	16,556
2008	11,565	8,125	22,229	41,919
2007	26,077	40,861	219,568	286,506
2006	4,339	14,624	16,716	35,679
2005	29,804	45,367	139,349	214,520
2004	60,474	62,624	96,945	220,043
2003	15,828	38,048	62,910	116,786
2002	13,341	13,094	40,928	67,363
2001	24,294	34,528	36,355	95,177
2000	24,713	65,118	109,145	198,976
1999	42,206	16,323	24,368	82,897
1998	856	6,032	73,280	80,168
1997	19,189	40,288	220,148	279,625
1996	3,920	22,193	166,633	192,746
1995	9,176	15,140	96,358	120,674
1994	3,100	44,557	101,101	148,758
1993	10,473	13,600	83,592	107,665
1992	57,863	111,840	457,817	627,520
1991	26,110	48,525	227,569	302,204
1990	15,584	38,972	104,278	158,834
1989	4,832	29,657	-	34,489
1988	14,181	29,968	-	44,149
1987	49,818	84,582	-	134,400
1986	52,244	217,121	-	269,365
1985	29,106	57,565	-	86,671
1984	5,027	14,101	-	19,128
1983	8,661	17,236	-	25,897
1982	33,049	106,852	-	139,901
1981	15,314	74,911	-	90,225
1980	63,972	171,415	-	235,387
1979	23,011	35,366	-	58,377
1978	10,553	10,674	-	21,227
1977	4,802	22,138	-	26,940
1976	34,534	29,457	-	63,991
1975	25,897	38,081	-	63,978
1974	13,095	80,377	-	93,472
1973	11,190	29,502	-	40,692
1972	53,512	61,546	-	115,058
1971	72,391	115,082	-	187,473
1970	4,945	3,364	-	8,309
1969	25,609	42,628	-	68,237
1968	11,977	-	-	11,977
1967	54,971	-	-	54,971
1966	54,777	-	-	54,777
1965	48,975	-	-	48,975
1964	16,660	-	-	16,660
1963	22,580	-	-	22,580
1962	72,841	-	-	72,841
1961	46,456	-	-	46,456
1960	102,836	-	-	102,836
1959	41,080	-	-	41,080
1958	44,921	-	-	44,921
1957	73,285	-	-	73,285
1956	21,240	-	-	21,240
1955	83,755	-	-	83,755
Annual Average	29,818	44,765	100,513	175,096

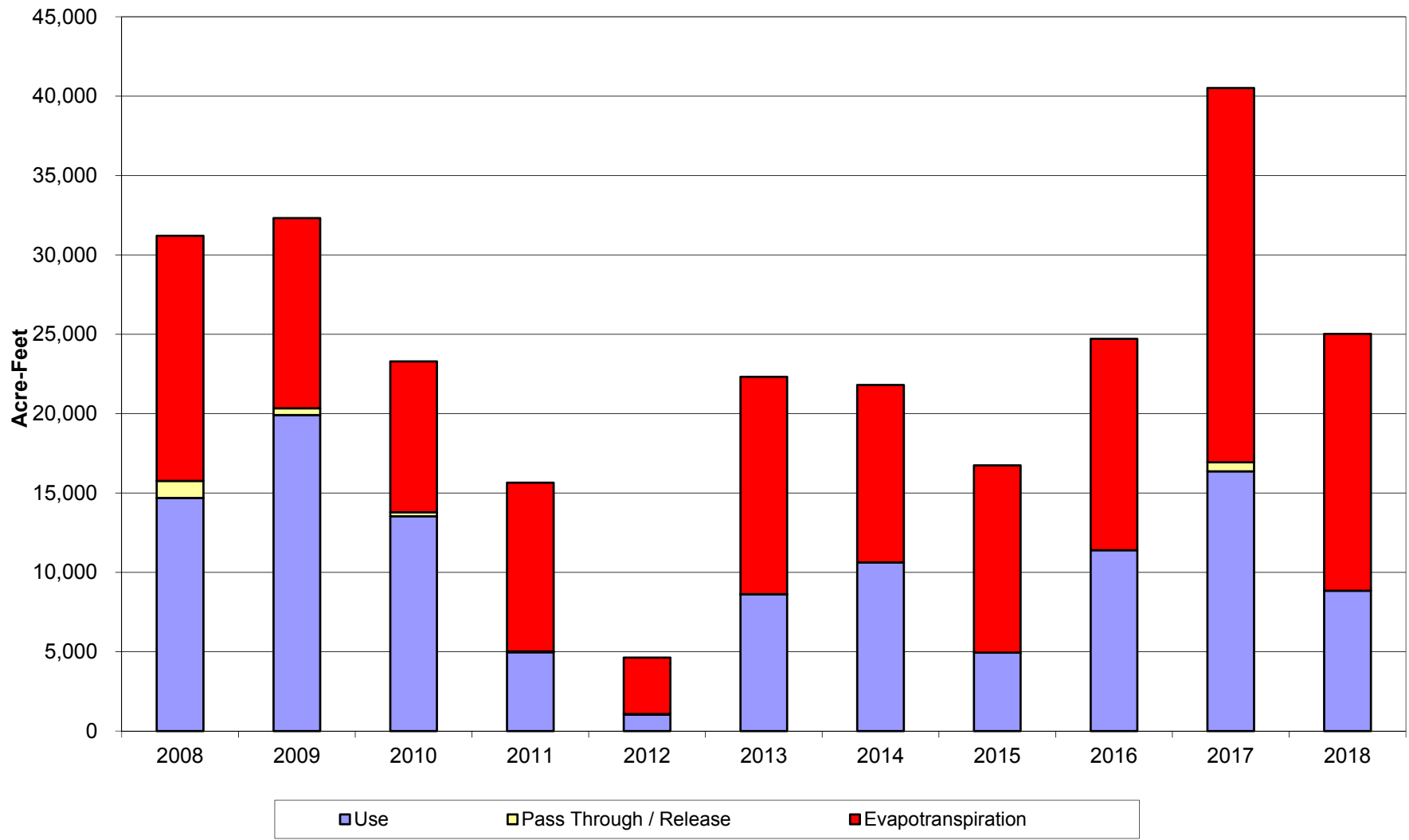
Combined Inflow (1955 through 2018)



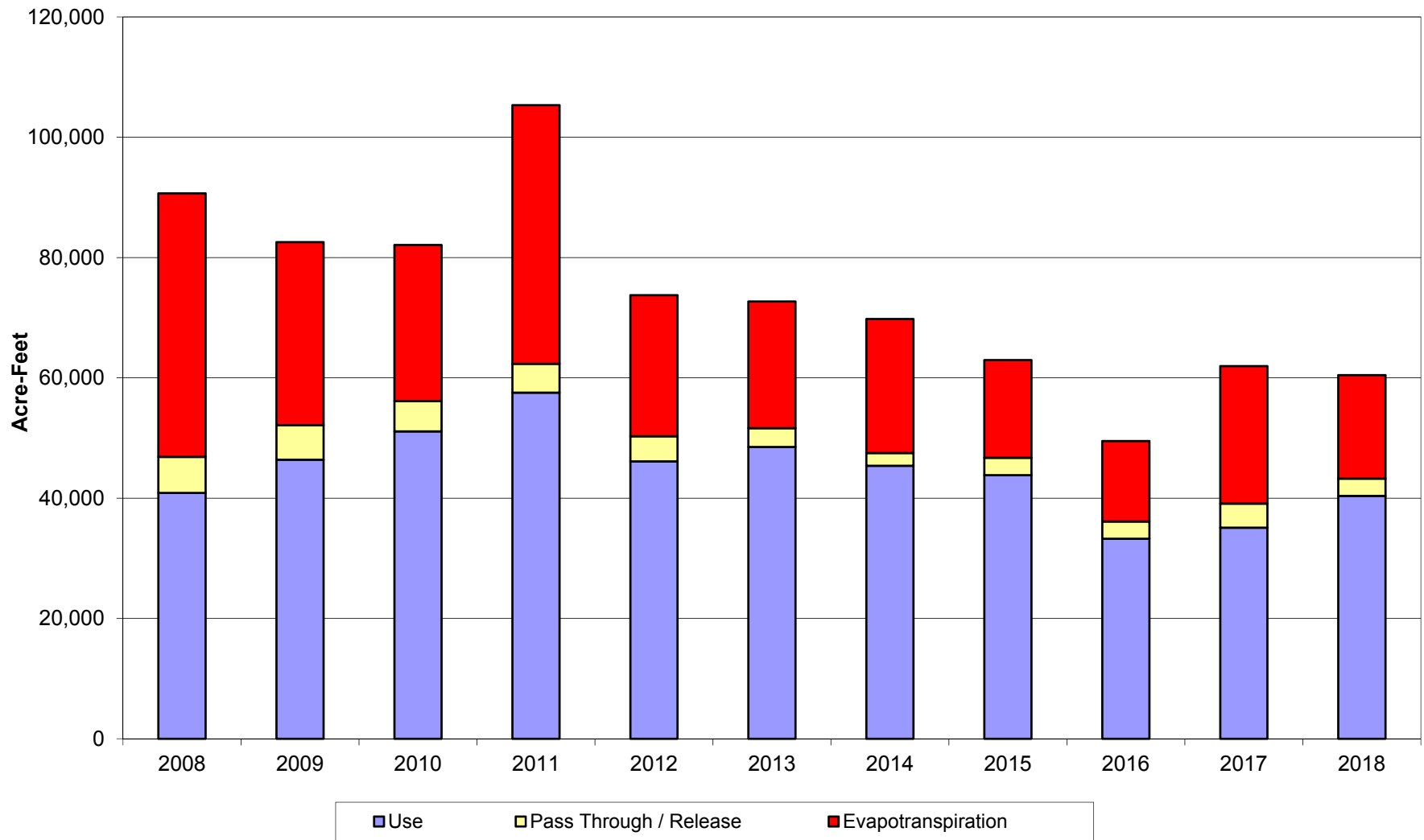
Lake J.B. Thomas
January 2008 thru December 2018



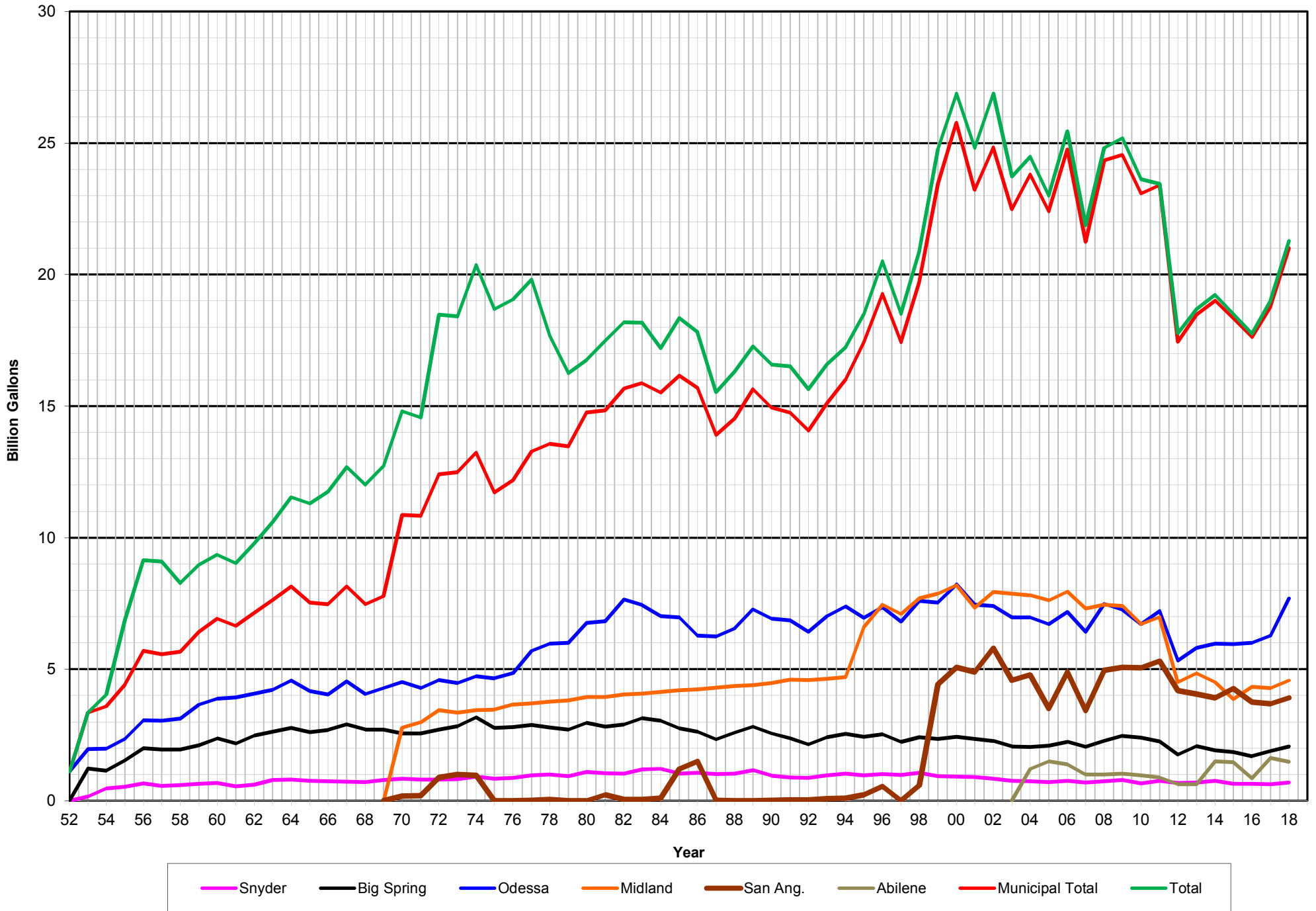
**E.V. Spence Reservoir
January 2008 thru December 2018**



O.H. Ivie Reservoir
January 2008 thru December 2018



Colorado River Municipal Water District Historical Water Delivery - FY 1952 - 2018



Colorado River Municipal Water District Source of Supply January 1962 through December 2018

