



Colorado River Municipal Water District

Monthly Water Report

September 2024

COLORADO RIVER MUNICIPAL WATER DISTRICT

PO Box 869, 400 East 24th Street

Big Spring, Texas 79721-0869

**Colorado River Municipal Water District
Water Delivered
September 2024**

Raw Water System

Member Cities	Total Deliveries This Month (Gal)	Daily Average For Month (Gal)	Year-to-Date (Gal)
Big Spring	155,824,900	5,194,163	1,424,708,600
Odessa	786,944,500	26,231,483	7,103,218,700
Snyder	53,797,000	1,793,233	539,344,000
Subtotal	996,566,400	33,218,880	9,067,271,300

Municipal Customers

Grandfalls	410,000	13,667	5,111,000
Midland - 1966 Contract	367,482,900	12,249,430	3,444,004,900
Midland - Ivie Contract	227,202,000	7,573,400	1,557,971,000
Millersview Doole WSC	15,349,000	511,633	344,890,433
San Angelo - Spence	0	0	0
San Angelo - Ivie	398,300,000	13,276,667	3,494,900,000
Stanton	10,225,600	340,853	102,258,100
Abilene	186,528,000	6,217,600	1,338,017,000
Subtotal	1,205,497,500	40,183,250	10,287,152,433

Industrial Customers

Alon Rural Meters	4,231,690	141,056	56,517,920
Luminant Generation	0	0	0
Occidental	2,780	93	15,610
Parallel Petroleum	890	30	23,850
Power Resources	7,226,000	240,867	35,926,000
Subtotal	11,461,360	382,045	92,483,380

Diverted Water System

Industrial Customers

BASA Resources	4,527,900	150,930	4,571,100
Sabinal	18,400	613	1,693,700
Rover Operating	2,818,170	93,939	23,561,010
Fleur de Lis Energy	0	0	0
Subtotal	7,364,470	245,482	29,825,810

Total Deliveries	2,220,889,730	74,029,658	19,476,732,923
-------------------------	----------------------	-------------------	-----------------------

**COLORADO RIVER MUNICIPAL WATER DISTRICT
RESERVOIR REPORT
September 2024**

<u>Lake J. B. Thomas</u>	<u>This Month</u>	<u>Year-to-Date Total</u>
<u>CONTENTS IN ACRE FEET</u>		
CAPACITY WHEN FULL	200,604	
CAPACITY THIS DATE	76,247	
PERCENT FULL	38.01%	
FREE CAPACITY THIS DATE	124,357	
INFLOWS*	44,694	50,891
PASS THROUGH / RELEASES	0	0
WITHDRAWALS	480	6,088
EVAPORATION*	(1,617)	(13,906)
<u>ELEVATION ABOVE MEAN SEA LEVEL</u>		
ELEVATION WHEN FULL	2,258.00	
ELEVATION THIS DATE	2,235.86	

E. V. Spence Reservoir

<u>CONTENTS IN ACRE FEET</u>		
CAPACITY WHEN FULL	517,272	
CAPACITY THIS DATE	91,777	
PERCENT FULL	17.74%	
FREE CAPACITY THIS DATE	425,495	
INFLOWS*	25,822	33,868
PASS THROUGH / RELEASES	0	0
WITHDRAWALS	1,132	12,167
EVAPORATION*	(437)	(17,482)
<u>ELEVATION ABOVE MEAN SEA LEVEL</u>		
ELEVATION WHEN FULL	1,898.00	
ELEVATION THIS DATE	1,852.79	

**COLORADO RIVER MUNICIPAL WATER DISTRICT
RESERVOIR REPORT
September 2024**

	<u>This Month</u>	<u>Year-to-Date Total</u>
<u>O. H. Ivie Reservoir</u>		
<i><u>CONTENTS IN ACRE FEET</u></i>		
CAPACITY WHEN FULL	554,340	
CAPACITY THIS DATE	192,562	
PERCENT FULL	34.74%	
FREE CAPACITY THIS DATE	361,778	
INFLOWS*	57,352	89,836
PASS THROUGH / RELEASES	278	1,200
WITHDRAWALS	3,514	27,836
SPILLS	0	0
EVAPORATION*	(1,694)	(28,327)
<i><u>ELEVATION ABOVE MEAN SEA LEVEL</u></i>		
ELEVATION WHEN FULL	1,551.50	
ELEVATION THIS DATE	1,525.54	

Moss Creek Lake

<i><u>CONTENTS IN ACRE FEET</u></i>		
CAPACITY WHEN FULL	3,441	
CAPACITY THIS DATE	2,563	
PERCENT FULL	74.48%	
FREE CAPACITY THIS DATE	878	
INFLOWS*	361	839
PASS THROUGH / RELEASES	0	0
WITHDRAWALS	341	424
SPILLS	0	0
EVAPORATION*	(64)	(645)
<i><u>ELEVATION ABOVE MEAN SEA LEVEL</u></i>		
ELEVATION WHEN FULL	2,336.50	
ELEVATION THIS DATE	2,330.60	

Reservoir Summary						
Reservoir	Elevation	Current Capacity (Acre Feet)	Year to Date Inflow (Acre Feet)	Year to Date Withdrawals (Acre Feet)	Year to Date Pass Through / Releases (Acre Feet)	Year to Date Evaporation (Acre Feet)
Lake J.B. Thomas	2,235.86	76,247	50,891	6,088	0	(13,906)
E.V. Spence Reservoir	1,852.79	91,777	33,868	12,167	0	(17,482)
O.H. Ivie Reservoir	1,525.54	192,562	89,836	27,836	1,200	(28,327)
Moss Creek Lake	2,330.60	2,563	839	424	0	(645)
Total		363,149	175,434	46,515	1,200	(60,360)

* Inflow and Evaporation are approximate.

**COLORADO RIVER MUNICIPAL WATER DISTRICT
 DIVERTED / WATER QUALITY ENHANCEMENT SYSTEM
 RESERVOIRS REPORT
 September 2024**

	<u>This Month</u>	<u>Year-to-Date Total</u>
<u>Natural Dam</u>		
<i><u>CONTENTS IN ACRE FEET</u></i>		
CAPACITY WHEN FULL	54,560	
CAPACITY THIS DATE	6,553	
PERCENT FULL	12.01%	
FREE CAPACITY THIS DATE	48,007	
INFLOWS*	1,819	1,819
SPILLS	0	0
EVAPORATION*	(596)	(5,640)
<i><u>ELEVATION ABOVE MEAN SEA LEVEL</u></i>		
ELEVATION WHEN FULL	2,457.00	
ELEVATION THIS DATE	2,436.10	
<u>Sulphur Draw Reservoir</u>		
<i><u>CONTENTS IN ACRE FEET</u></i>		
CAPACITY WHEN FULL	7,997	
CAPACITY THIS DATE	417	
PERCENT FULL	5.21%	
FREE CAPACITY THIS DATE	7,580	
INFLOWS*	182	182
PASS THROUGH / RELEASES	0	0
EVAPORATION*	(52)	(520)
<i><u>ELEVATION ABOVE MEAN SEA LEVEL</u></i>		
ELEVATION WHEN FULL	2,541.00	
ELEVATION THIS DATE	2,524.50	

**COLORADO RIVER MUNICIPAL WATER DISTRICT
 DIVERTED / WATER QUALITY ENHANCEMENT SYSTEM
 RESERVOIRS REPORT
 September 2024**

	<u>This Month</u>	<u>Year-to-Date Total</u>
<u>Barber Lake</u>		
<i><u>CONTENTS IN ACRE FEET</u></i>		
CAPACITY WHEN FULL	2,503	
CAPACITY THIS DATE	1,023	
PERCENT FULL	40.87%	
FREE CAPACITY THIS DATE	1,480	
INFLOWS*	0	450
WIER FLOW	13	155
PUMPED IN	5	402
WITHDRAWALS	54	54
SPILLS	0	0
EVAPORATION*	(55)	(638)
<i><u>ELEVATION ABOVE MEAN SEA LEVEL</u></i>		
ELEVATION WHEN FULL	2,097.00	
ELEVATION THIS DATE	2,087.48	
 <u>Red Draw</u>		
<i><u>CONTENTS IN ACRE FEET</u></i>		
CAPACITY WHEN FULL	8,538	
CAPACITY THIS DATE	2,648	
PERCENT FULL	31.01%	
FREE CAPACITY THIS DATE	5,890	
INFLOWS*	262	435
PUMPED IN	0	0
WITHDRAWALS	0	0
SPILLS	0	0
EVAPORATION*	(79)	(777)
<i><u>ELEVATION ABOVE MEAN SEA LEVEL</u></i>		
ELEVATION WHEN FULL	2,445.00	
ELEVATION THIS DATE	2,422.72	

**COLORADO RIVER MUNICIPAL WATER DISTRICT
 DIVERTED / WATER QUALITY ENHANCEMENT SYSTEM
 RESERVOIRS REPORT
 September 2024**

<u>Mitchell County</u>	<u>This Month</u>	<u>Year-to-Date Total</u>
<u><i>CONTENTS IN ACRE FEET</i></u>		
CAPACITY WHEN FULL	27,266	
CAPACITY THIS DATE	3,851	
PERCENT FULL	14.12%	
FREE CAPACITY THIS DATE	23,415	
INFLOWS*	304	688
SPILLS	0	0
TRANSFERS IN	(32)	(203)
EVAPORATION*	(168)	(1,729)

<u><i>ELEVATION ABOVE MEAN SEA LEVEL</i></u>	
ELEVATION WHEN FULL	2,200.00
ELEVATION THIS DATE	2,173.37

Diverted / Water Quality Enhancement System Summary				
Reservoir	Elevation	Capacity	Year to Date Inflow (Acre Feet)	Year to Date Evaporation (Acre Feet)
Natural Dam	2,436.10	6,553	1,819	(5,640)
Sulphur Draw	2,524.50	417	182	(520)
Barber Lake	2,087.48	1,023	450	(638)
Red Draw	2,422.72	2,648	435	(777)
Mitchell County Reservoir	2,173.37	3,851	688	(1,729)
Total		14,492	3,574	(9,304)

* Inflow and Evaporation are approximate.

Water Quality Diversions		
Source	Current Month (Acre Feet)	Year to Date (Acre Feet)
Colorado River	5	402
Beals Creek	0	0
Total	5	402

**COLORADO RIVER MUNICIPAL WATER DISTRICT
GROUNDWATER REPORT
September 2024**

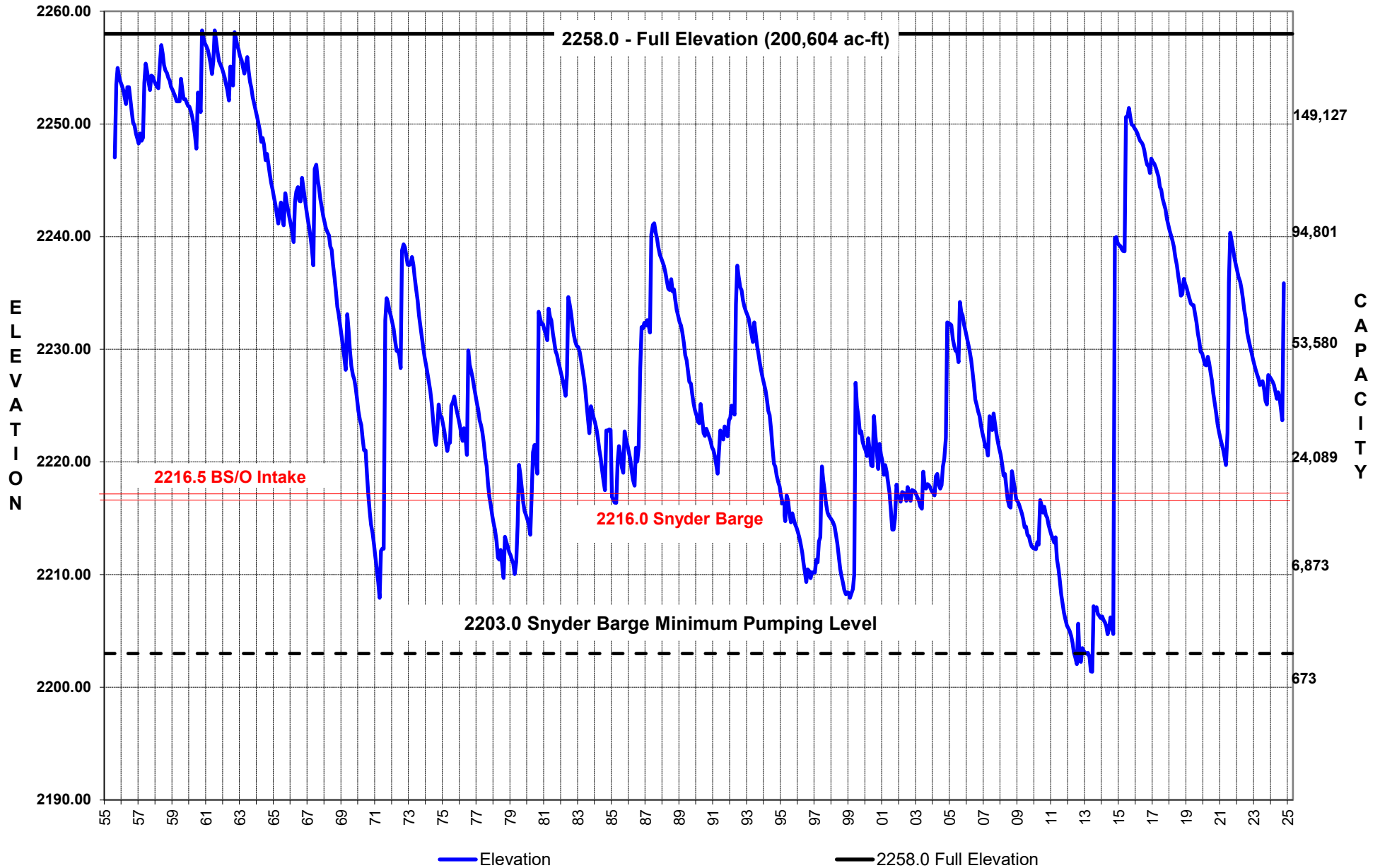
<u>Well Field</u>	<u>Production This Month (Gallons)</u>	<u>Daily Average for Month (Gal)</u>	<u>Production Year- to-Date (Gallons)</u>
Ward County North Well Field	212,395,790	7,079,860	2,808,114,980
Ward County South Well Field	0	0	213,401,000
Odessa Well Field (Out of Service)	0	0	0
Martin County Well Field	809,150	26,972	37,160,280
Snyder Well Field	0	0	0
Total	213,204,940	7,106,831	3,058,676,260

**BIG SPRING RAW WATER PRODUCTION FACILITY
PRODUCTION REPORT
September 2024**

	<u>Production This Month (Gallons)</u>	<u>Daily Average for Month (Gal)</u>	<u>Production Year- to-Date (Gallons)</u>
Big Spring Raw Water Production Facility	11,210,000	373,667	140,710,000

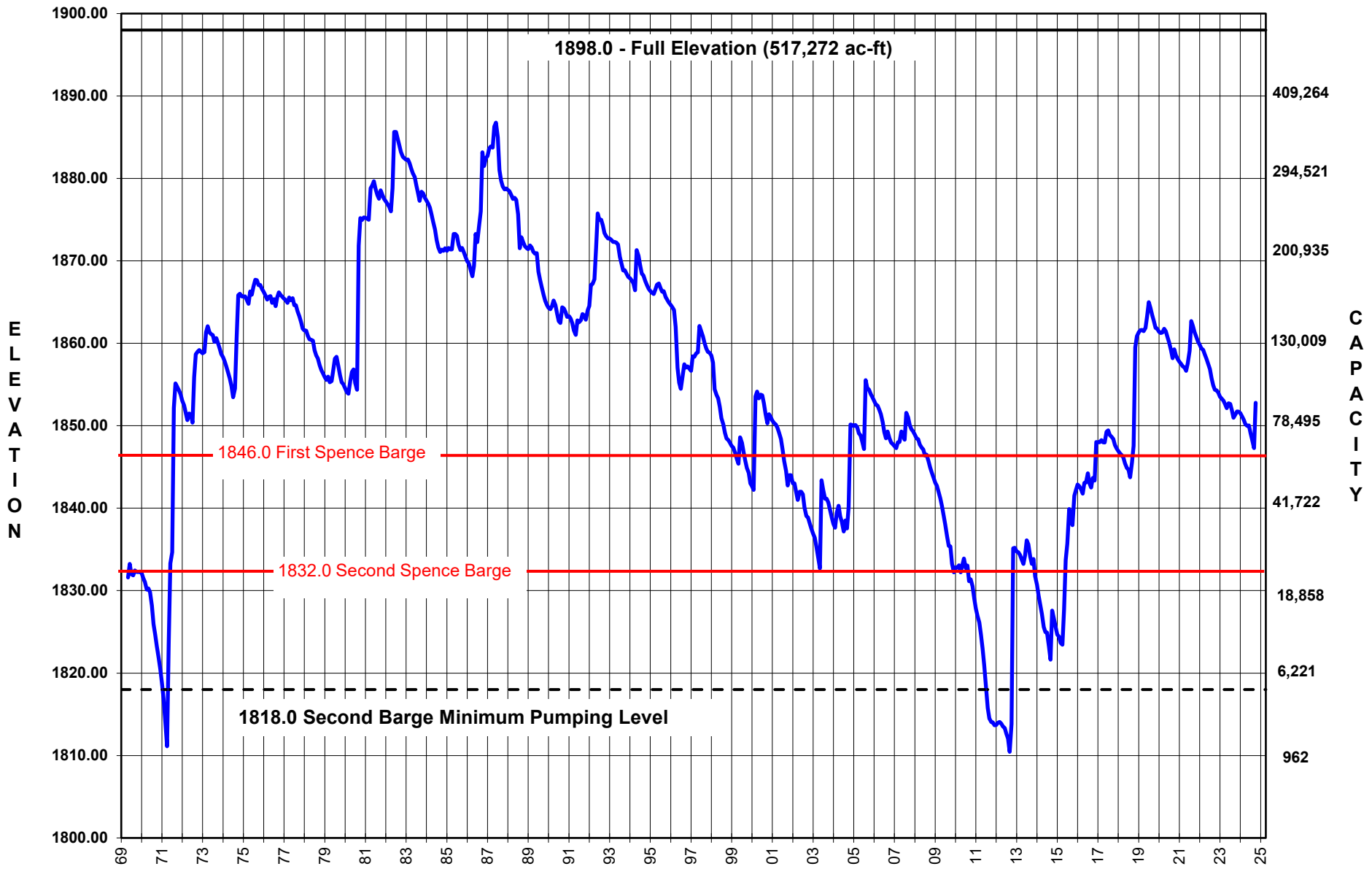
LAKE J.B. THOMAS

Elevation August 1955 - September 2024



E.V. SPENCE RESERVOIR

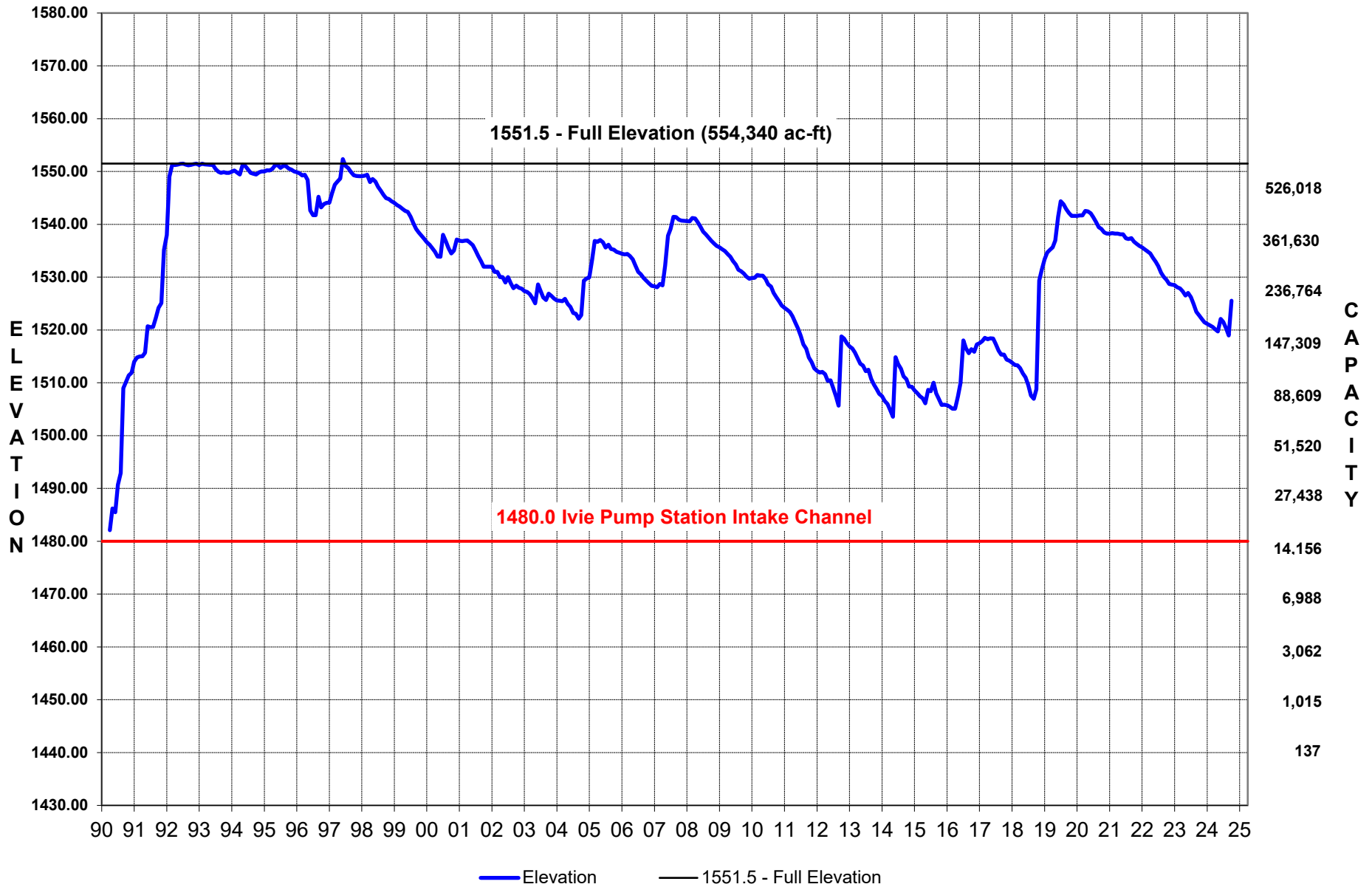
Elevation May 1969 - September 2024



— Elevation — 1898.0-Full Elevation

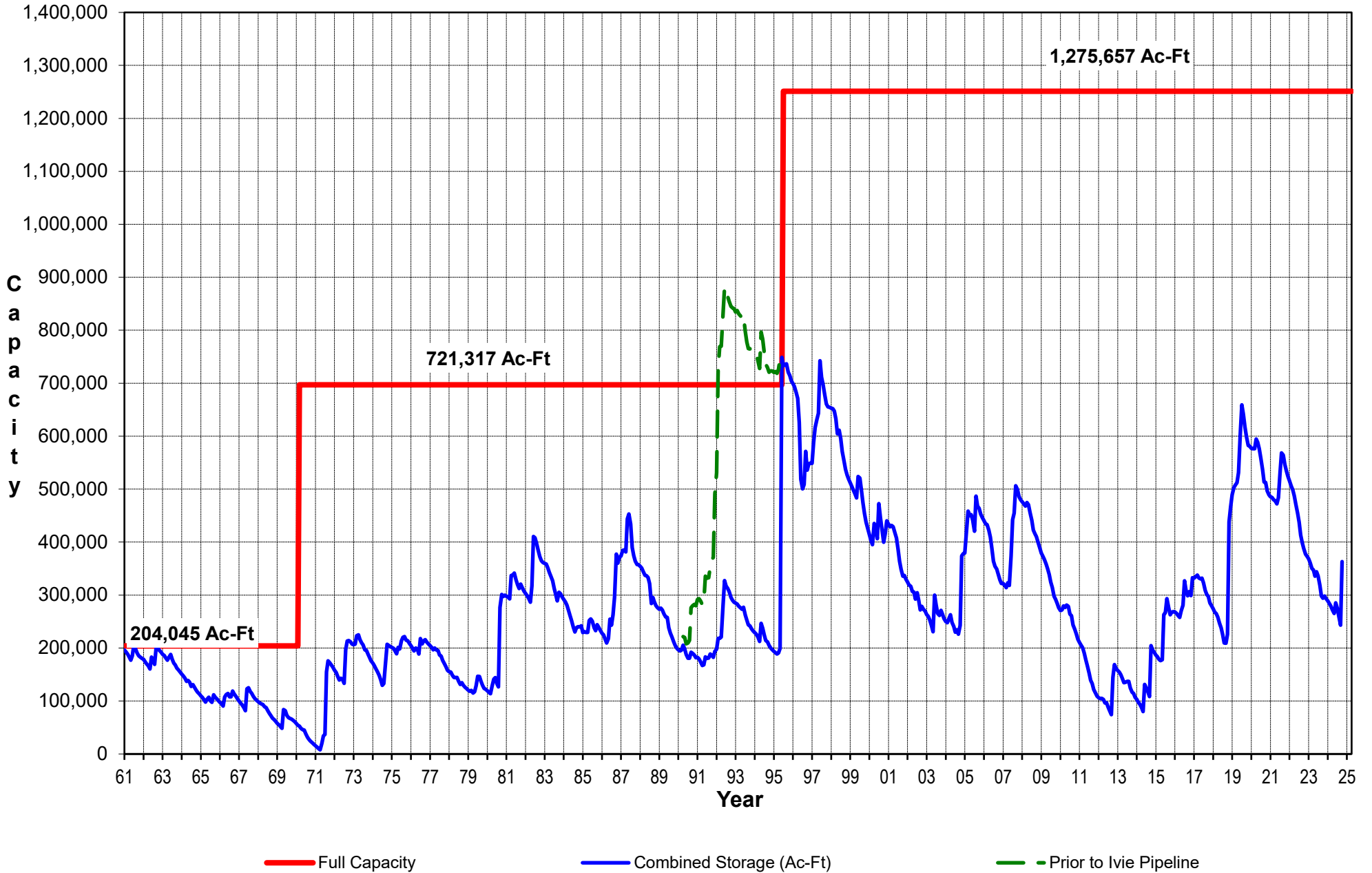
O.H. IVIE RESERVOIR

Elevation April 1990 - September 2024



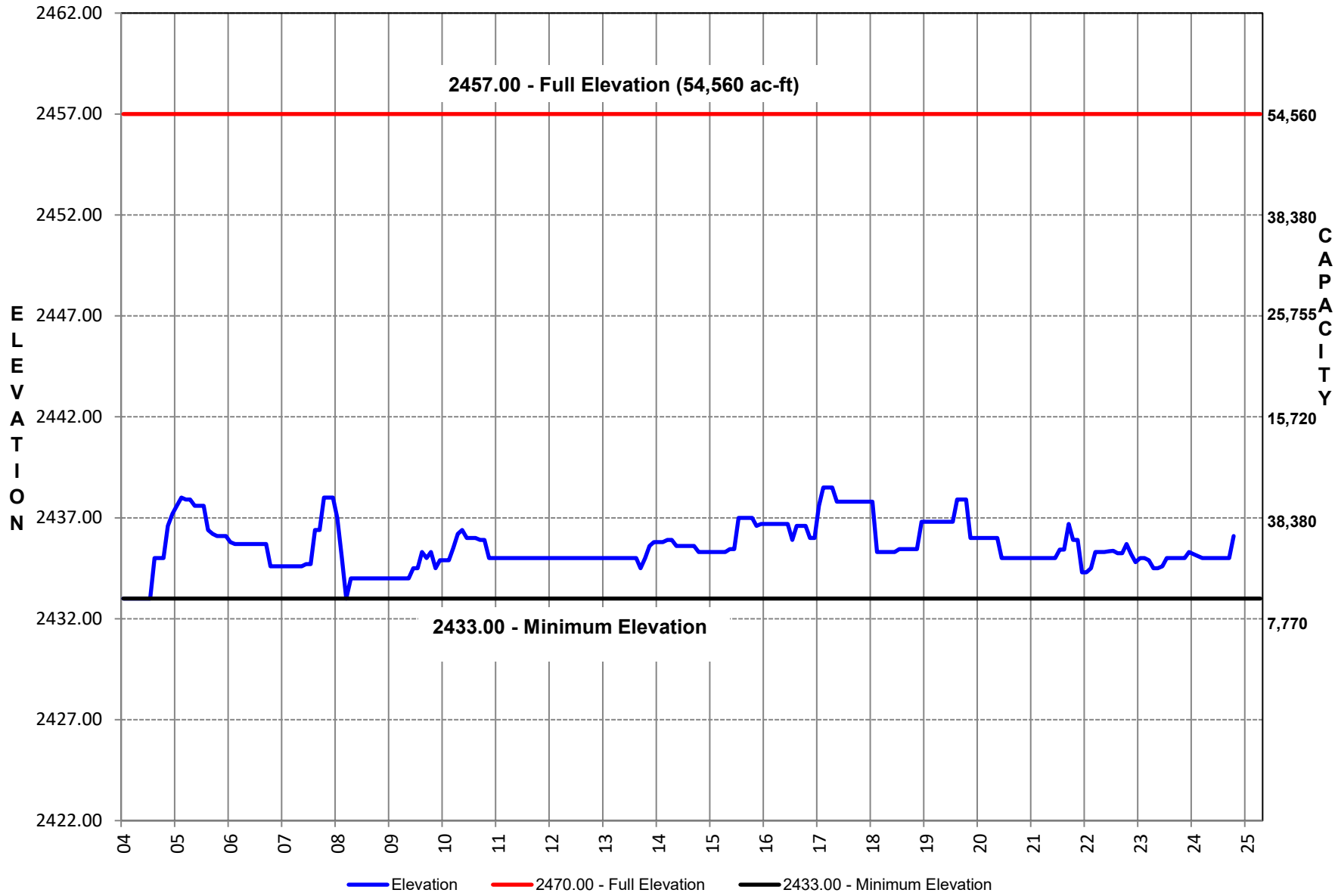
COLORADO RIVER MUNICIPAL WATER DISTRICT

COMBINED STORAGE Thomas, Spence, Moss, Ivie



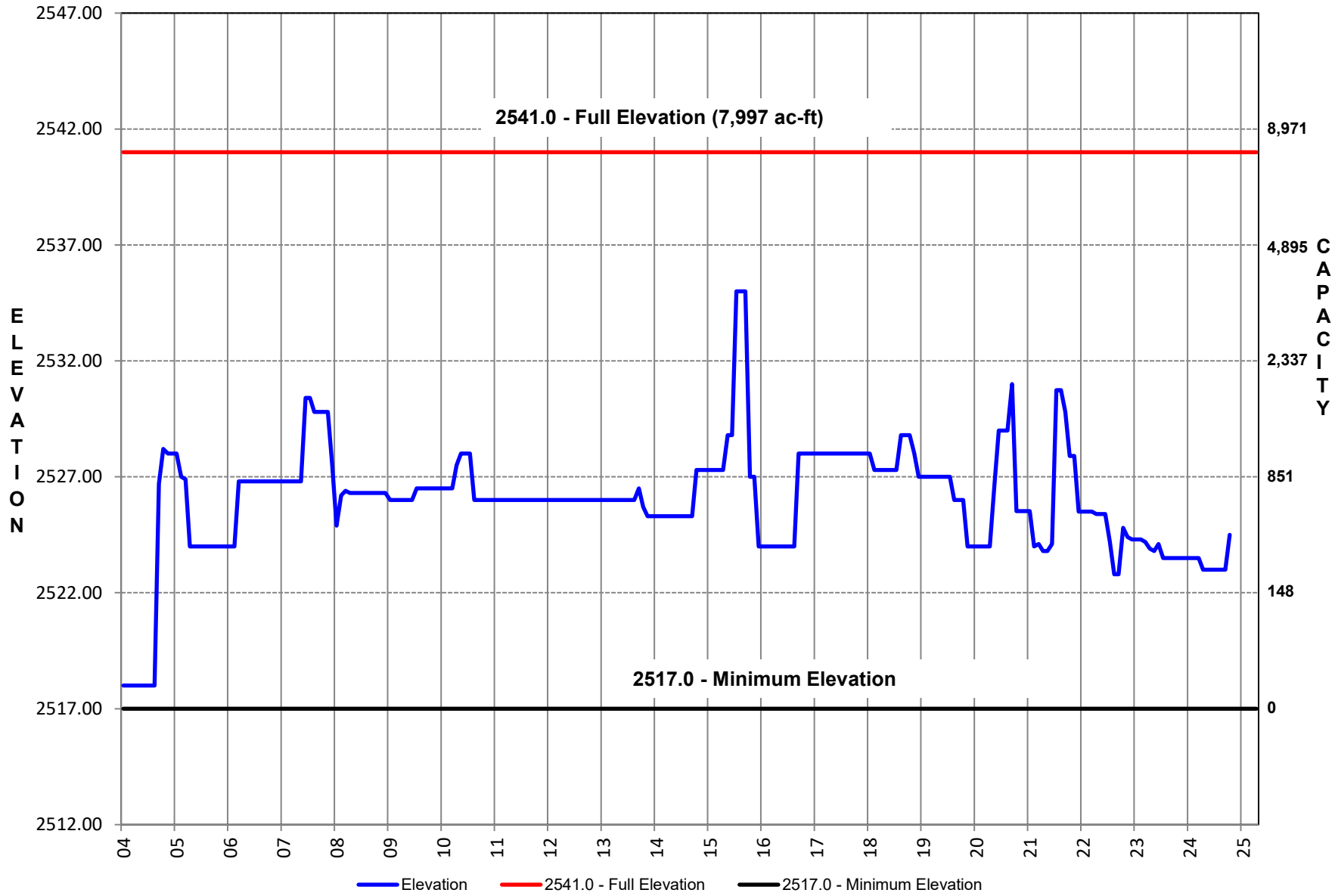
Natural Dam Reservoir

Elevation January 2004 - September 2024



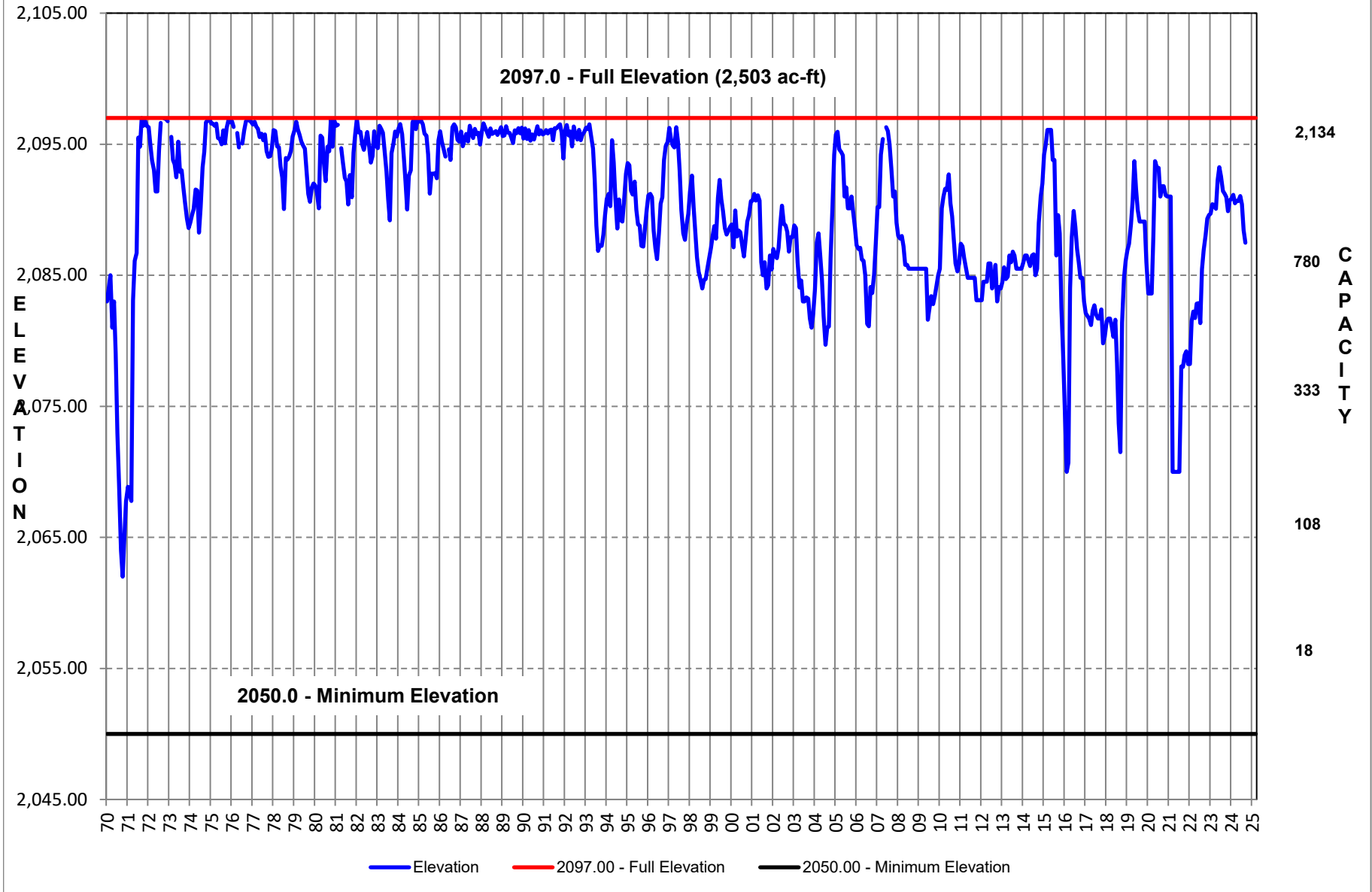
Sulphur Draw Reservoir

Elevation January 2004 - September 2024



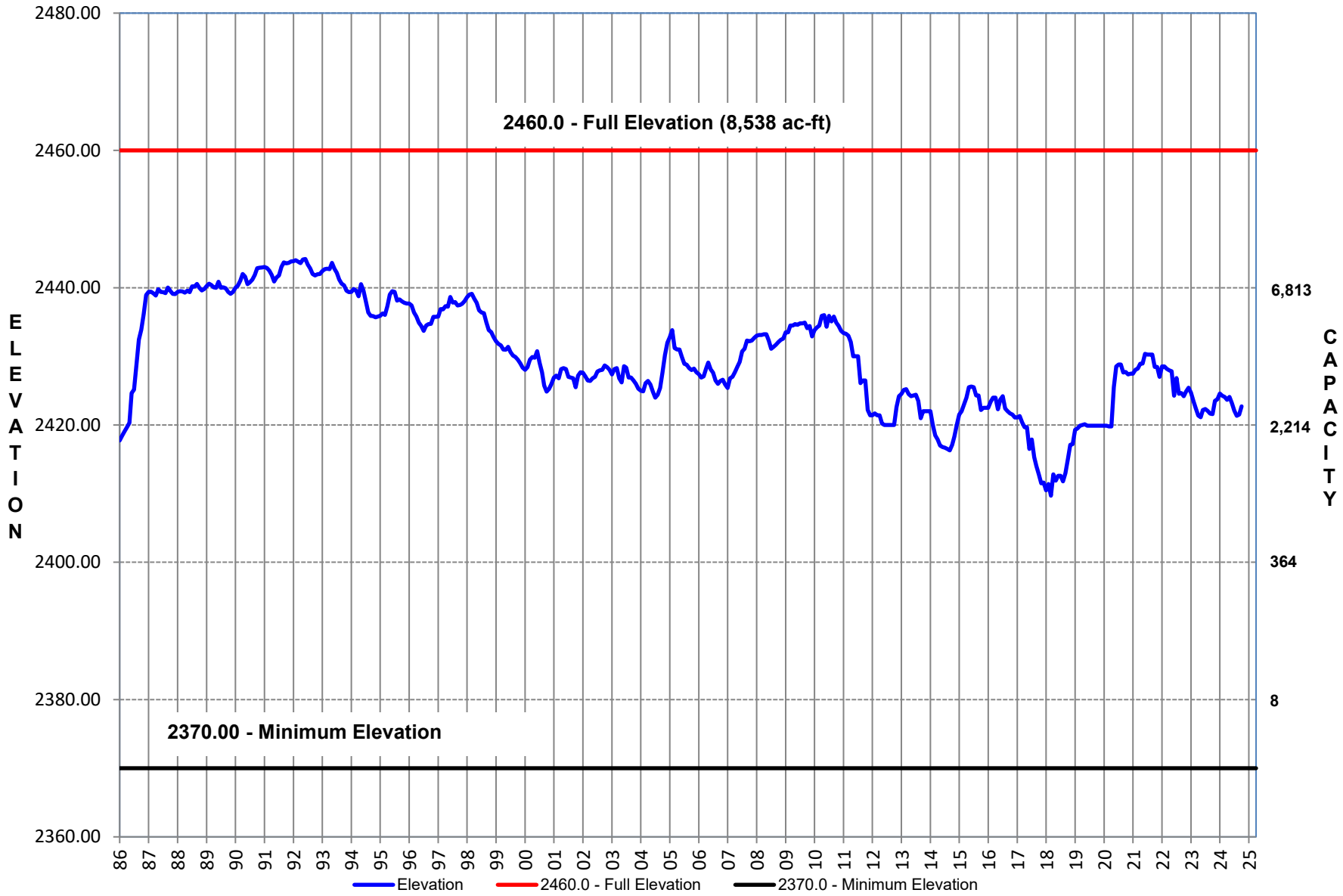
Barber Lake

Elev February 1970 - September 2024



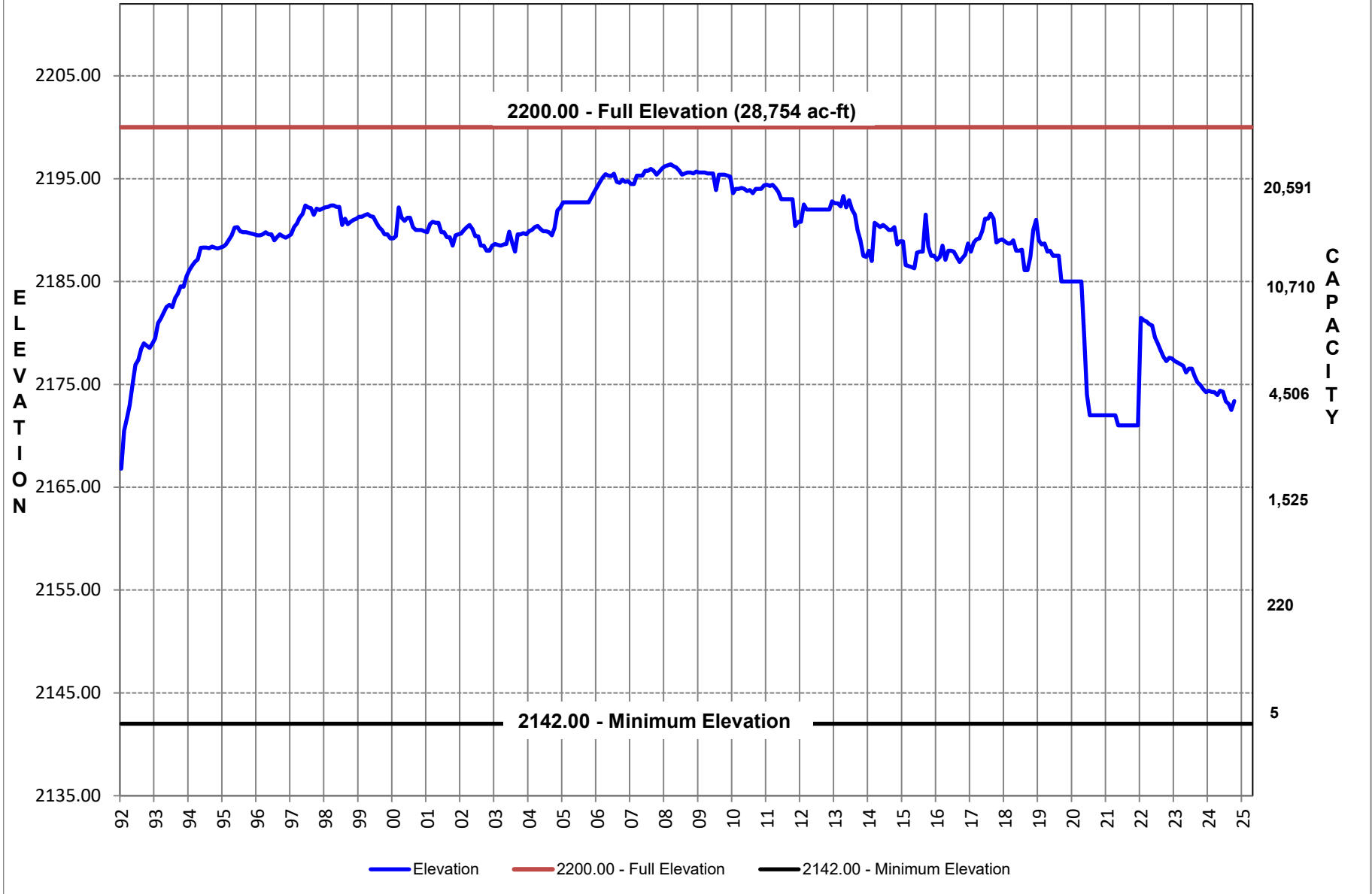
Red Draw

Elevation January 1986 - September 2024



Mitchell County Reservoir

Elevation January 1992 - September 2024



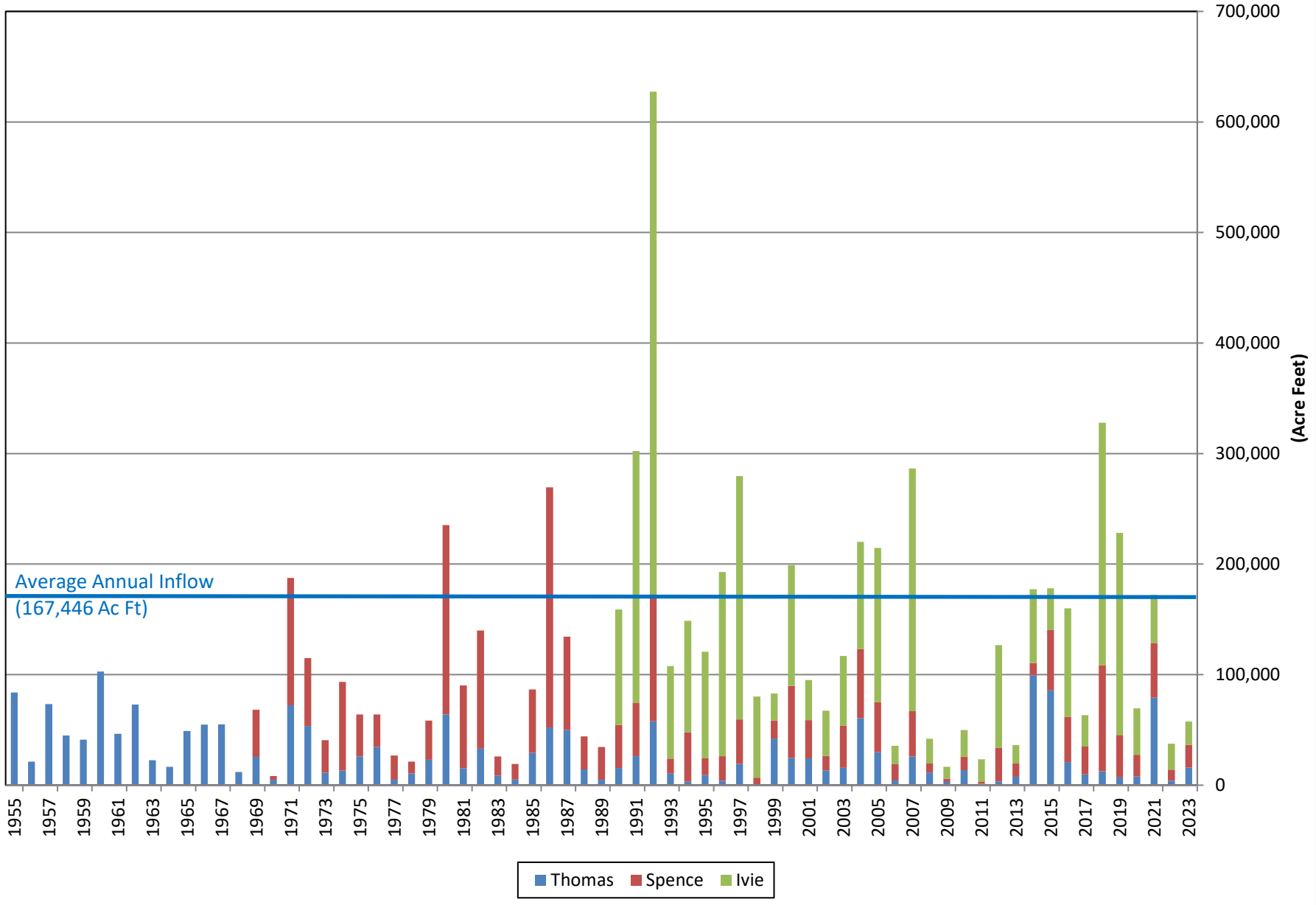
Annual Historical Data

COLORADO RIVER MUNICIPAL WATER DISTRICT

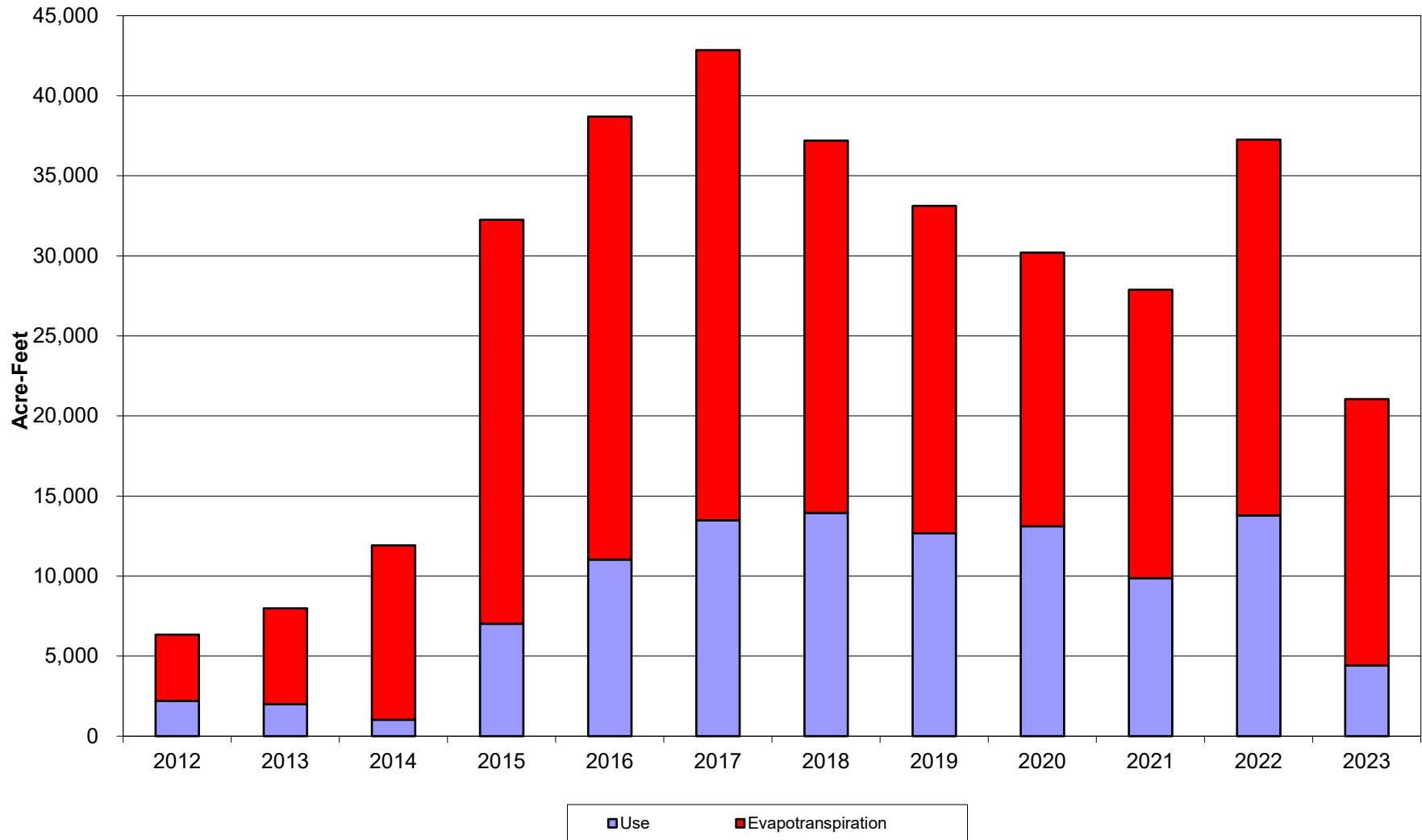
RESERVOIR INFLOW SUMMARY

Calendar Year	J.B. Thomas (AC-FT)	E.V. Spence (AC-FT)	O.H. Ivie (AC-FT)	Total (AC-FT)
2023	16,069	20,354	21,057	57,480
2022	4,001	9,985	23,456	37,442
2021	79,022	49,615	43,502	172,139
2020	7,767	19,636	42,062	69,465
2019	7,085	38,224	182,888	228,197
2018	12,555	96,010	219,357	327,922
2017	9,768	25,255	28,405	63,428
2016	20,888	40,914	98,262	160,064
2015	85,698	54,737	37,696	178,131
2014	99,308	11,218	66,819	177,345
2013	7,739	11,754	16,824	36,317
2012	3,408	30,247	93,091	126,746
2011	1,343	1,585	20,411	23,339
2010	13,717	12,034	24,069	49,820
2009	2,901	2,996	10,659	16,556
2008	11,565	8,125	22,229	41,919
2007	26,077	40,861	219,568	286,506
2006	4,339	14,624	16,716	35,679
2005	29,804	45,367	139,349	214,520
2004	60,474	62,624	96,945	220,043
2003	15,828	38,048	62,910	116,786
2002	13,341	13,094	40,928	67,363
2001	24,294	34,528	36,355	95,177
2000	24,713	65,118	109,145	198,976
1999	42,206	16,323	24,368	82,897
1998	856	6,032	73,280	80,168
1997	19,189	40,288	220,148	279,625
1996	3,920	22,193	166,633	192,746
1995	9,176	15,140	96,358	120,674
1994	3,100	44,557	101,101	148,758
1993	10,473	13,600	83,592	107,665
1992	57,863	111,840	457,817	627,520
1991	26,110	48,525	227,569	302,204
1990	15,584	38,972	104,278	158,834
1989	4,832	29,657	-	34,489
1988	14,181	29,968	-	44,149
1987	49,818	84,582	-	134,400
1986	52,244	217,121	-	269,365
1985	29,106	57,565	-	86,671
1984	5,027	14,101	-	19,128
1983	8,661	17,236	-	25,897
1982	33,049	106,852	-	139,901
1981	15,314	74,911	-	90,225
1980	63,972	171,415	-	235,387
1979	23,011	35,366	-	58,377
1978	10,553	10,674	-	21,227
1977	4,802	22,138	-	26,940
1976	34,534	29,457	-	63,991
1975	25,897	38,081	-	63,978
1974	13,095	80,377	-	93,472
1973	11,190	29,502	-	40,692
1972	53,512	61,546	-	115,058
1971	72,391	115,082	-	187,473
1970	4,945	3,364	-	8,309
1969	25,609	42,628	-	68,237
1968	11,977	-	-	11,977
1967	54,971	-	-	54,971
1966	54,777	-	-	54,777
1965	48,975	-	-	48,975
1964	16,660	-	-	16,660
1963	22,580	-	-	22,580
1962	72,841	-	-	72,841
1961	46,456	-	-	46,456
1960	102,836	-	-	102,836
1959	41,080	-	-	41,080
1958	44,921	-	-	44,921
1957	73,285	-	-	73,285
1956	21,240	-	-	21,240
1955	83,755	-	-	83,755
Annual Average	29,308	43,201	94,937	167,446

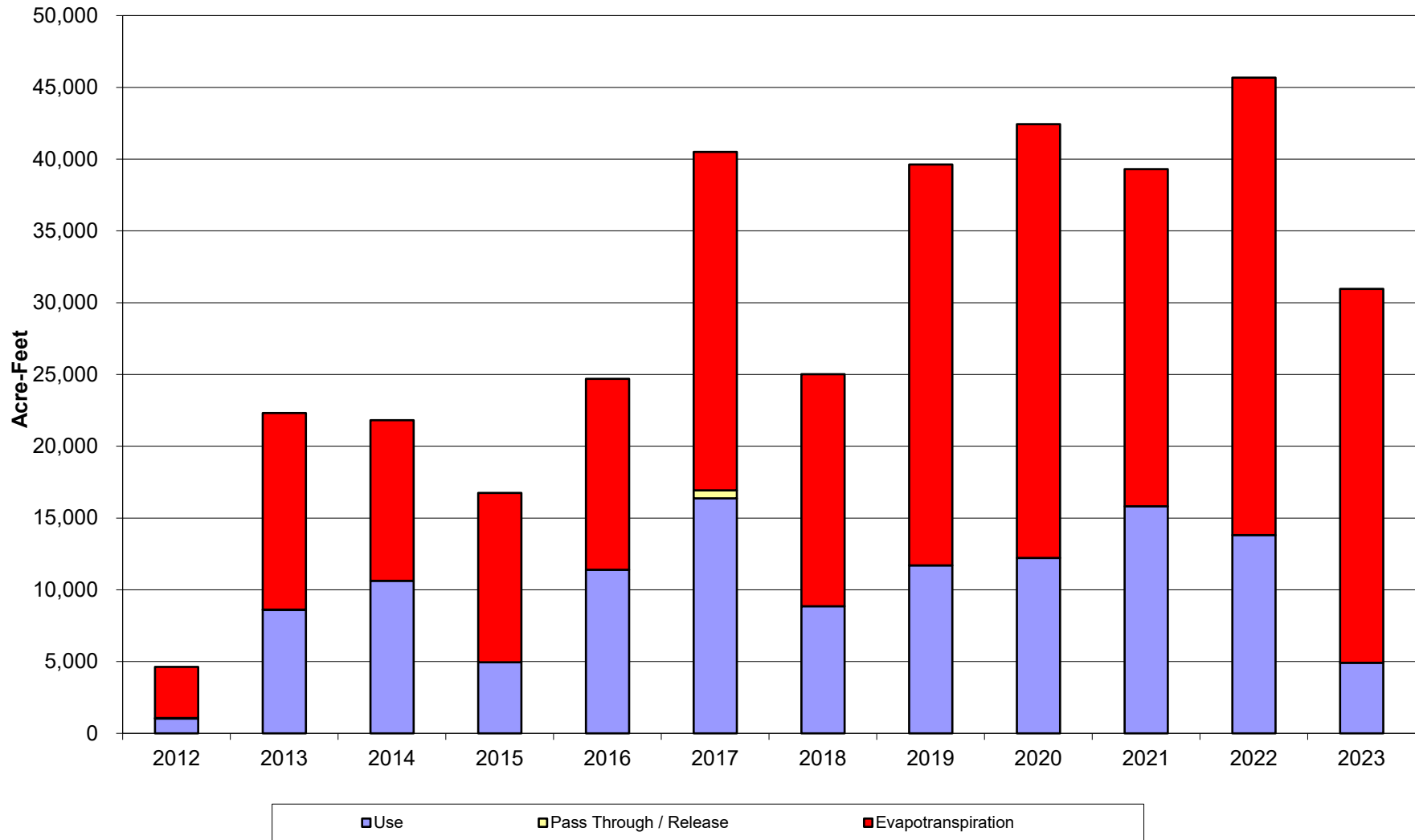
Combined Inflow (1955 through 2023)



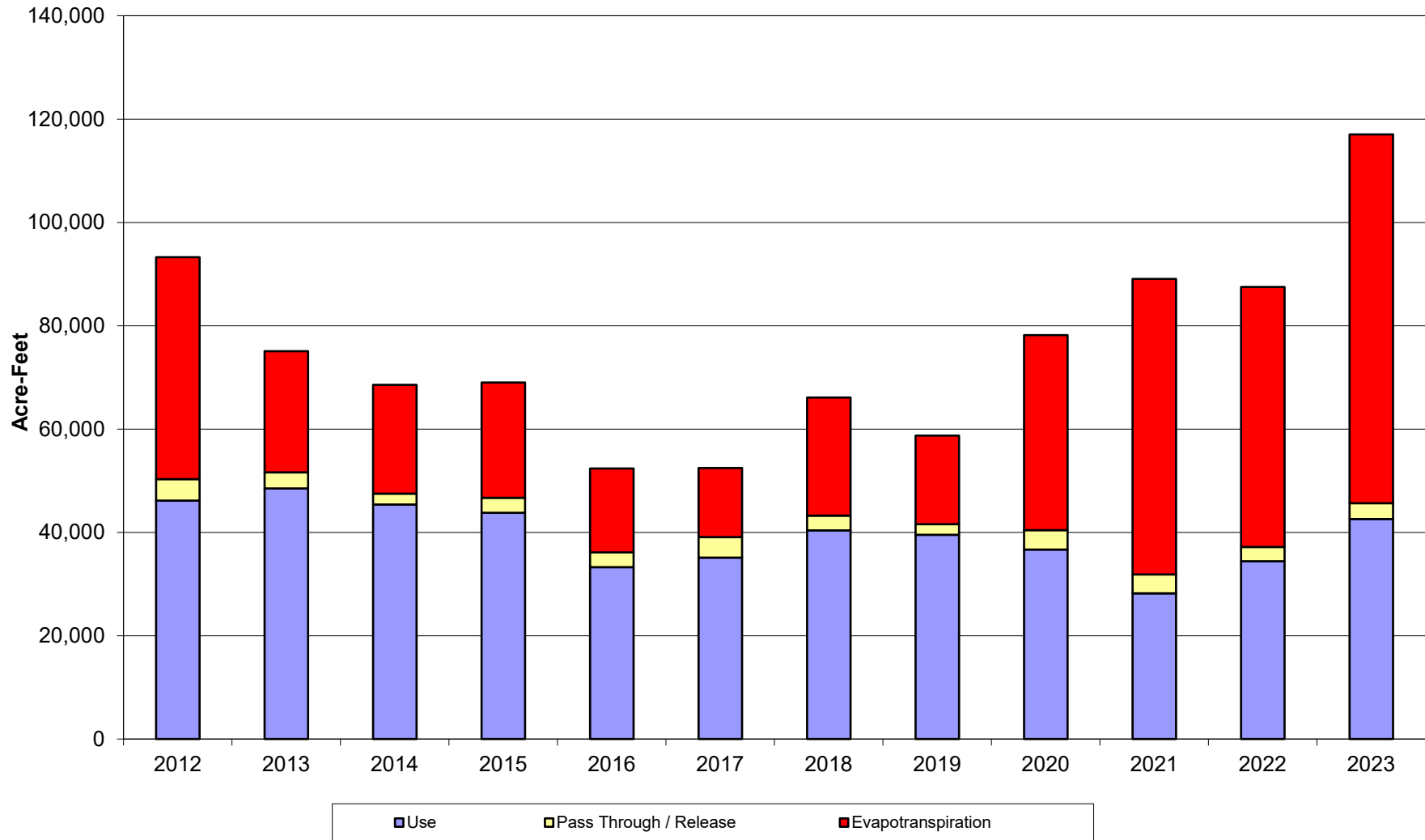
Lake J.B. Thomas
January 2012 thru December 2023



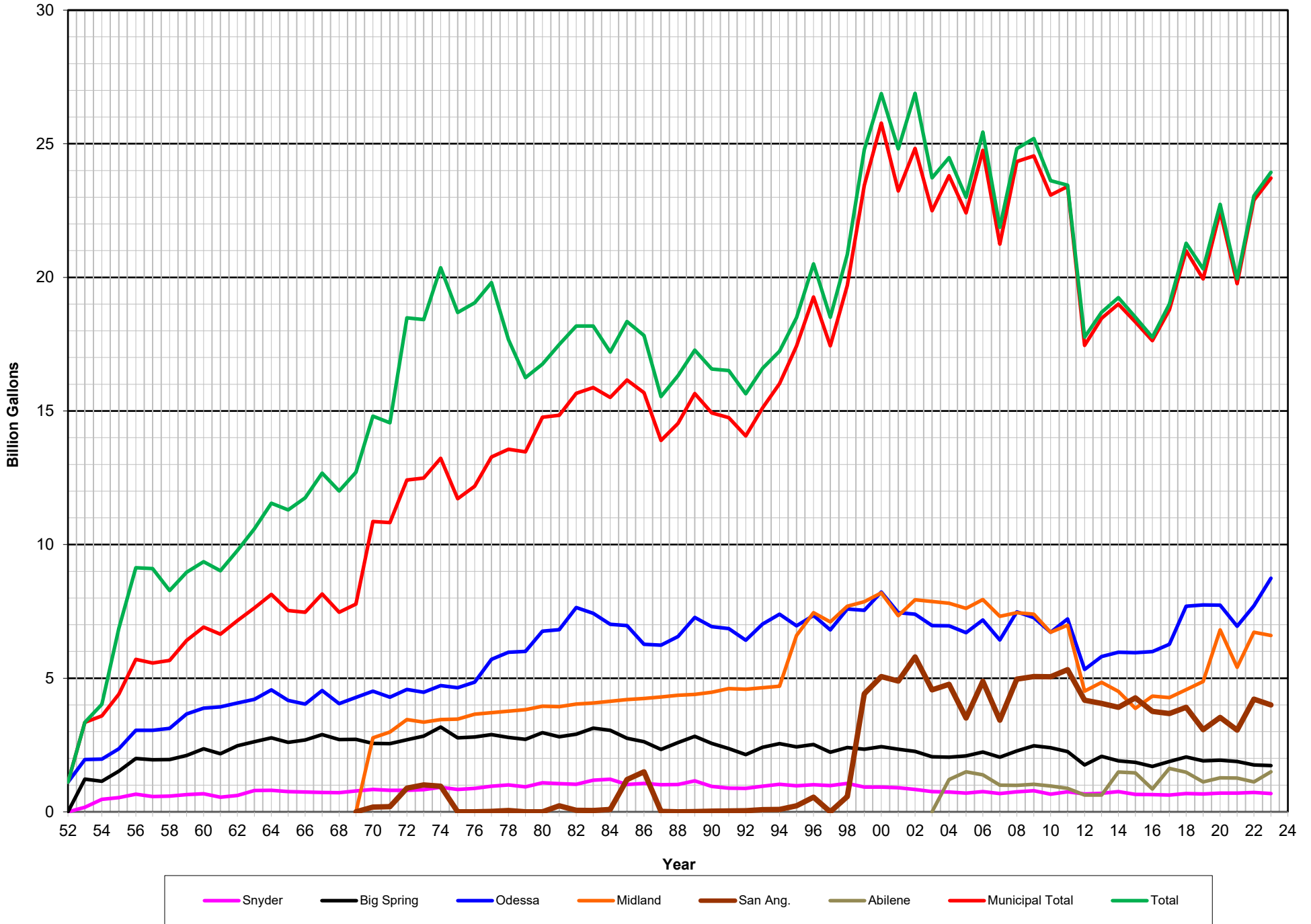
E.V. Spence Reservoir January 2012 thru December 2023



O.H. Ivie Reservoir
January 2012 thru December 2023



Colorado River Municipal Water District Historical Water Delivery - FY 1952 - 2023



Colorado River Municipal Water District Source of Supply January 1962 through December 2023

