



Colorado River Municipal Water District

Monthly Water Report

January 2026

COLORADO RIVER MUNICIPAL WATER DISTRICT

PO Box 869, 400 East 24th Street

Big Spring, Texas 79721-0869

**Colorado River Municipal Water District
Water Delivered
January 2026**

Raw Water System

Member Cities	Total Deliveries This Month (Gal)	Daily Average For Month (Gal)	Year-to-Date (Gal)
Big Spring	157,810,500	5,090,661	157,810,500
Odessa	500,015,000	16,129,516	500,015,000
Snyder	53,690,000	1,731,935	53,690,000
Subtotal	<u>711,515,500</u>	<u>22,952,113</u>	<u>711,515,500</u>

Municipal Customers

Grandfalls	492,000	15,871	492,000
Midland - 1966 Contract	326,076,000	10,518,581	326,076,000
Midland - Ivie Contract	103,151,000	3,327,452	103,151,000
Millersview Doole WSC	48,332,500	1,559,113	48,332,500
San Angelo - Spence	0	0	0
San Angelo - Ivie	227,300,000	7,332,258	227,300,000
Stanton	2,935,000	94,677	2,935,000
Abilene	133,768,000	4,315,097	133,768,000
Subtotal	<u>842,054,500</u>	<u>27,163,048</u>	<u>842,054,500</u>

Industrial Customers

Alon Rural Meters	4,507,010	145,387	4,507,010
Luminant Generation	0	0	0
Occidental	1,610	52	1,610
Parallel Petroleum	1,070	35	1,070
Power Resources	12,940,000	417,419	12,940,000
Subtotal	<u>17,449,690</u>	<u>562,893</u>	<u>17,449,690</u>

Diverted Water System

Industrial Customers

BASA Resources	4,620,900	149,061	4,620,900
Sabinal	713,900	23,029	713,900
Rover Operating	0	0	0
Fleur de Lis Energy	0	0	0
Subtotal	<u>5,334,800</u>	<u>172,090</u>	<u>5,334,800</u>

Total Deliveries	1,576,354,490	50,850,145	1,576,354,490
-------------------------	----------------------	-------------------	----------------------

**COLORADO RIVER MUNICIPAL WATER DISTRICT
RESERVOIR REPORT
January 2026**

<u>Lake J. B. Thomas</u>	<u>This Month</u>	<u>Year-to-Date Total</u>
<u>CONTENTS IN ACRE FEET</u>		
CAPACITY WHEN FULL	200,604	
CAPACITY THIS DATE	59,436	
PERCENT FULL	29.63%	
FREE CAPACITY THIS DATE	141,168	
INFLOWS*	136	136
PASS THROUGH / RELEASES	0	0
WITHDRAWALS	980	980
EVAPORATION*	(1,171)	(1,171)

<u>ELEVATION ABOVE MEAN SEA LEVEL</u>		
ELEVATION WHEN FULL	2,258.00	
ELEVATION THIS DATE	2,231.63	

E. V. Spence Reservoir

<u>CONTENTS IN ACRE FEET</u>		
CAPACITY WHEN FULL	517,272	
CAPACITY THIS DATE	63,055	
PERCENT FULL	12.19%	
FREE CAPACITY THIS DATE	454,217	
INFLOWS*	39	39
PASS THROUGH / RELEASES	0	0
WITHDRAWALS	765	765
EVAPORATION*	(1,240)	(1,240)

<u>ELEVATION ABOVE MEAN SEA LEVEL</u>		
ELEVATION WHEN FULL	1,898.00	
ELEVATION THIS DATE	1,846.28	

**COLORADO RIVER MUNICIPAL WATER DISTRICT
RESERVOIR REPORT
January 2026**

	<u>This Month</u>	<u>Year-to-Date Total</u>
<u>O. H. Ivie Reservoir</u>		
<i><u>CONTENTS IN ACRE FEET</u></i>		
CAPACITY WHEN FULL	554,340	
CAPACITY THIS DATE	256,887	
PERCENT FULL	46.34%	
FREE CAPACITY THIS DATE	297,453	
INFLOWS*	718	718
PASS THROUGH / RELEASES	36	36
WITHDRAWALS	2,553	2,553
SPILLS	0	0
EVAPORATION*	(3,407)	(3,407)
<i><u>ELEVATION ABOVE MEAN SEA LEVEL</u></i>		
ELEVATION WHEN FULL	1,551.50	
ELEVATION THIS DATE	1,531.83	

Moss Creek Lake

<i><u>CONTENTS IN ACRE FEET</u></i>		
CAPACITY WHEN FULL	3,441	
CAPACITY THIS DATE	2,405	
PERCENT FULL	69.89%	
FREE CAPACITY THIS DATE	1,036	
INFLOWS*	18	18
PASS THROUGH / RELEASES	0	0
WITHDRAWALS	309	309
SPILLS	0	0
EVAPORATION*	(28)	(28)
<i><u>ELEVATION ABOVE MEAN SEA LEVEL</u></i>		
ELEVATION WHEN FULL	2,336.50	
ELEVATION THIS DATE	2,329.47	

Reservoir Summary						
Reservoir	Elevation	Current Capacity (Acre Feet)	Year to Date Inflow (Acre Feet)	Year to Date Withdrawals (Acre Feet)	Year to Date Pass Through / Releases (Acre Feet)	Year to Date Evaporation (Acre Feet)
Lake J.B. Thomas	2,231.63	59,436	136	980	0	(1,171)
E.V. Spence Reservoir	1,846.28	63,055	39	765	0	(1,240)
O.H. Ivie Reservoir	1,531.83	256,887	718	2,553	36	(3,407)
Moss Creek Lake	2,329.47	2,405	18	309	0	(28)
	Total	381,783	911	4,607	36	(5,846)

* Inflow and Evaporation are approximate.

**COLORADO RIVER MUNICIPAL WATER DISTRICT
 DIVERTED / WATER QUALITY ENHANCEMENT SYSTEM
 RESERVOIRS REPORT
 January 2026**

	<u>This Month</u>	<u>Year-to-Date Total</u>
<u>Natural Dam</u>		
<i><u>CONTENTS IN ACRE FEET</u></i>		
CAPACITY WHEN FULL	54,560	
CAPACITY THIS DATE	5,907	
PERCENT FULL	10.83%	
FREE CAPACITY THIS DATE	48,653	
INFLOWS*	0	0
SPILLS	0	0
EVAPORATION*	(263)	(263)
<i><u>ELEVATION ABOVE MEAN SEA LEVEL</u></i>		
ELEVATION WHEN FULL	2,457.00	
ELEVATION THIS DATE	2,435.60	
<u>Sulphur Draw Reservoir</u>		
<i><u>CONTENTS IN ACRE FEET</u></i>		
CAPACITY WHEN FULL	7,997	
CAPACITY THIS DATE	348	
PERCENT FULL	4.35%	
FREE CAPACITY THIS DATE	7,649	
INFLOWS*	0	0
PASS THROUGH / RELEASES	0	0
EVAPORATION*	(28)	(28)
<i><u>ELEVATION ABOVE MEAN SEA LEVEL</u></i>		
ELEVATION WHEN FULL	2,541.00	
ELEVATION THIS DATE	2,524.00	

**COLORADO RIVER MUNICIPAL WATER DISTRICT
 DIVERTED / WATER QUALITY ENHANCEMENT SYSTEM
 RESERVOIRS REPORT
 January 2026**

	<u>This Month</u>	<u>Year-to-Date Total</u>
<u>Barber Lake</u>		
<i><u>CONTENTS IN ACRE FEET</u></i>		
CAPACITY WHEN FULL	2,503	
CAPACITY THIS DATE	723	
PERCENT FULL	28.89%	
FREE CAPACITY THIS DATE	1,780	
INFLOWS*	0	0
WIER FLOW	3	3
PUMPED IN	8	8
WITHDRAWALS	0	0
SPILLS	0	0
EVAPORATION*	(13)	(13)
<i><u>ELEVATION ABOVE MEAN SEA LEVEL</u></i>		
ELEVATION WHEN FULL	2,097.00	
ELEVATION THIS DATE	2,084.19	
 <u>Red Draw</u>		
<i><u>CONTENTS IN ACRE FEET</u></i>		
CAPACITY WHEN FULL	8,538	
CAPACITY THIS DATE	3,189	
PERCENT FULL	37.35%	
FREE CAPACITY THIS DATE	5,349	
INFLOWS*	115	115
PUMPED IN	125	125
WITHDRAWALS	0	0
SPILLS	0	0
EVAPORATION*	(38)	(38)
<i><u>ELEVATION ABOVE MEAN SEA LEVEL</u></i>		
ELEVATION WHEN FULL	2,445.00	
ELEVATION THIS DATE	2,425.70	

**COLORADO RIVER MUNICIPAL WATER DISTRICT
 DIVERTED / WATER QUALITY ENHANCEMENT SYSTEM
 RESERVOIRS REPORT
 January 2026**

<u>Mitchell County</u>	<u>This Month</u>	<u>Year-to-Date Total</u>
<u>CONTENTS IN ACRE FEET</u>		
CAPACITY WHEN FULL	27,266	
CAPACITY THIS DATE	3,203	
PERCENT FULL	11.75%	
FREE CAPACITY THIS DATE	24,063	
INFLOWS*	0	0
SPILLS	0	0
TRANSFERS IN	0	0
EVAPORATION*	(67)	(67)

<u>ELEVATION ABOVE MEAN SEA LEVEL</u>	
ELEVATION WHEN FULL	2,200.00
ELEVATION THIS DATE	2,171.52

Diverted / Water Quality Enhancement System Summary				
Reservoir	Elevation	Capacity	Year to Date Inflow (Acre Feet)	Year to Date Evaporation (Acre Feet)
Natural Dam	2,435.60	5,907	0	(263)
Sulphur Draw	2,524.00	348	0	(28)
Barber Lake	2,084.19	723	0	(13)
Red Draw	2,425.70	3,189	115	(38)
Mitchell County Reservoir	2,171.52	3,203	0	(67)
	Total	13,370	115	(408)

* Inflow and Evaporation are approximate.

Water Quality Diversions		
Source	Current Month (Acre Feet)	Year to Date (Acre Feet)
Colorado River	8	8
Beals Creek	3	3
	Total	11

**COLORADO RIVER MUNICIPAL WATER DISTRICT
GROUNDWATER REPORT
January 2026**

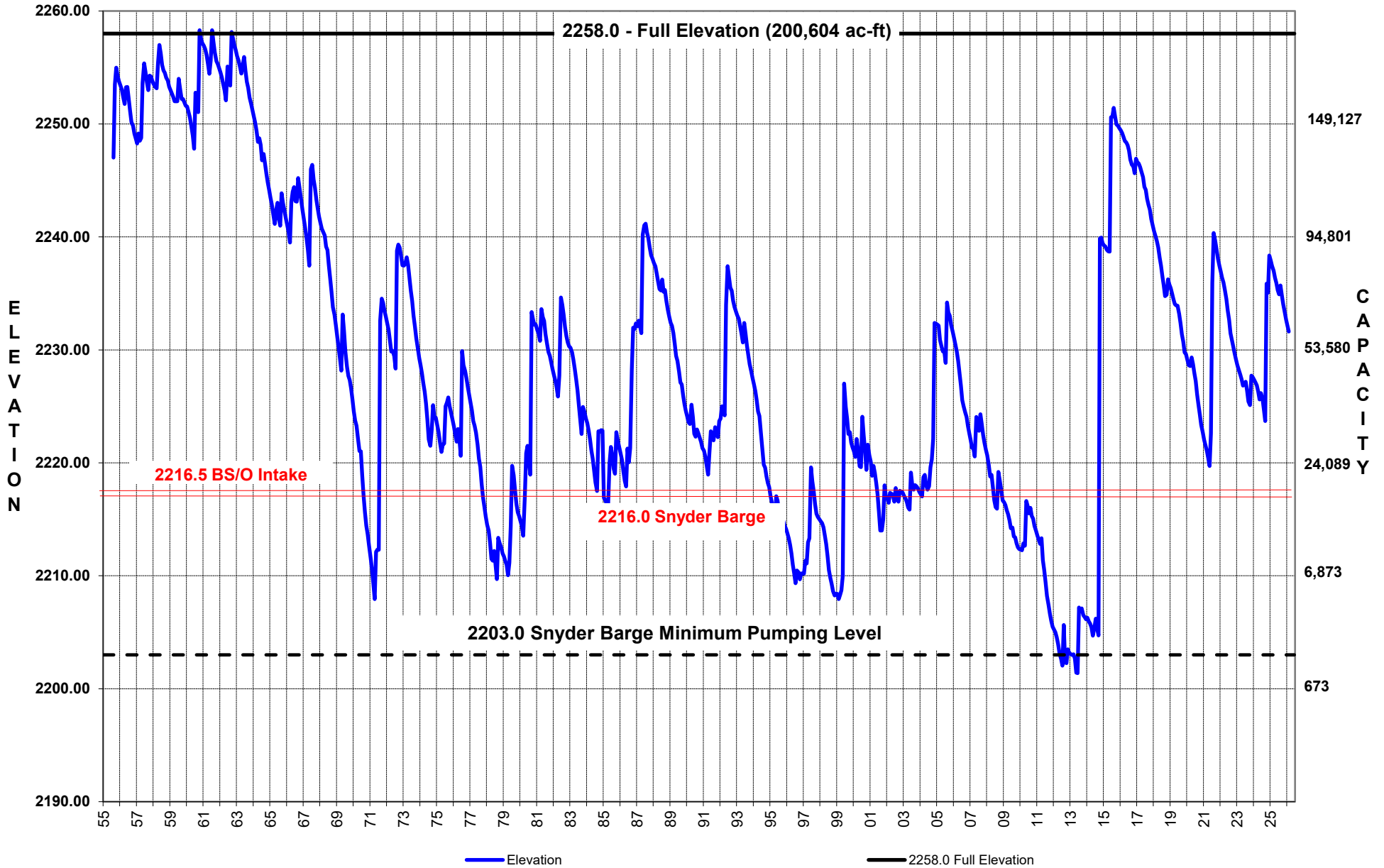
<u>Well Field</u>	<u>Production This Month (Gallons)</u>	<u>Daily Average for Month (Gal)</u>	<u>Production Year- to-Date (Gallons)</u>
Ward County North Well Field	28,474,220	918,523	28,474,220
Ward County South Well Field	1,000	32	1,000
Odessa Well Field (Out of Service)	0	0	0
Martin County Well Field	2,844,000	91,742	2,844,000
Snyder Well Field	0	0	0
Total	31,319,220	1,010,297	31,319,220

**BIG SPRING RAW WATER PRODUCTION FACILITY
PRODUCTION REPORT
January 2026**

	<u>Production This Month (Gallons)</u>	<u>Daily Average for Month (Gal)</u>	<u>Production Year- to-Date (Gallons)</u>
Big Spring Raw Water Production Facility	14,240,000	459,355	14,240,000

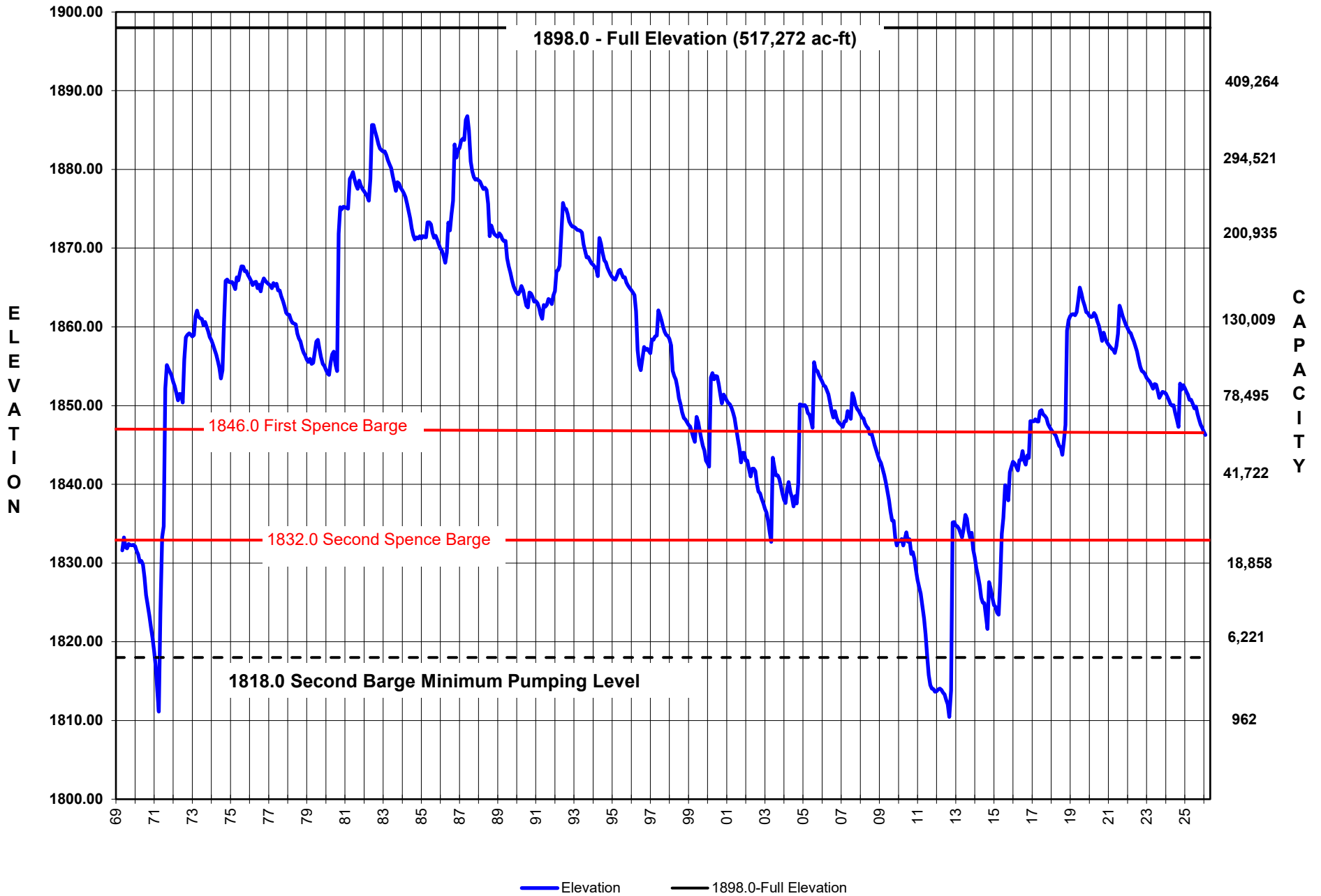
LAKE J.B. THOMAS

Elevation August 1955 - January 2026



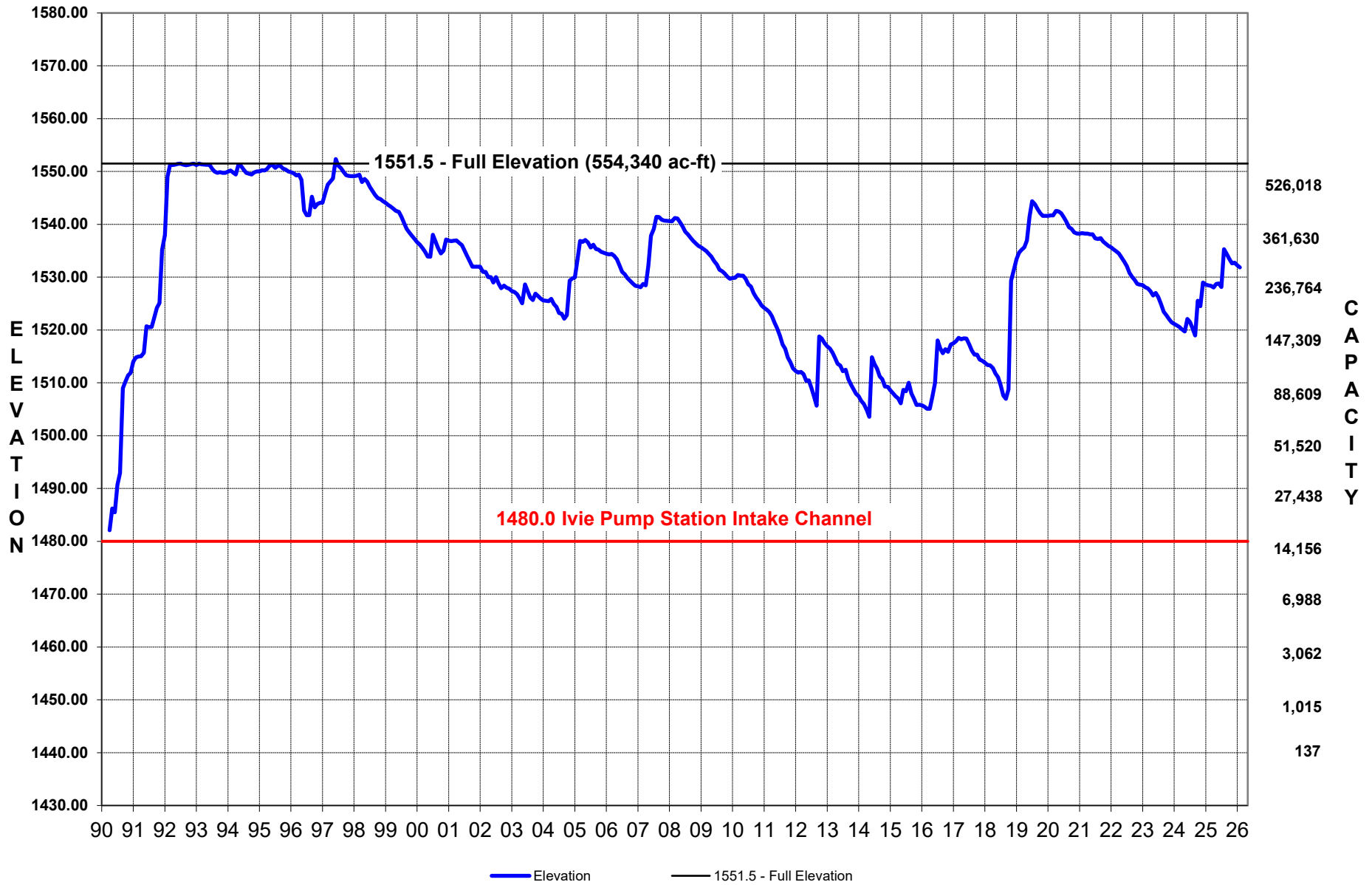
E.V. SPENCE RESERVOIR

Elevation May 1969 - January 2026



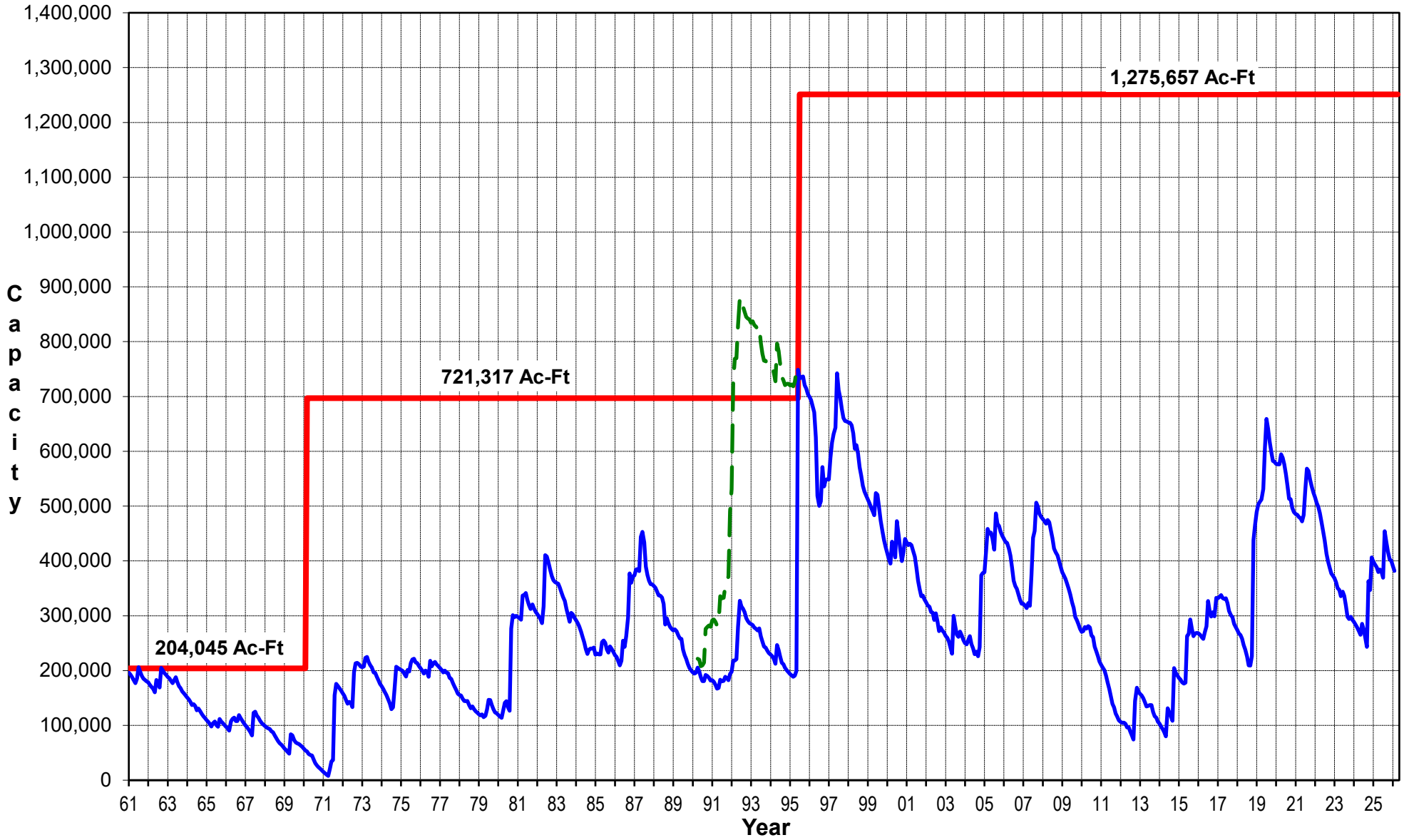
O.H. IVIE RESERVOIR

Elevation April 1990 - January 2026



COLORADO RIVER MUNICIPAL WATER DISTRICT

COMBINED STORAGE Thomas, Spence, Moss, Ivie



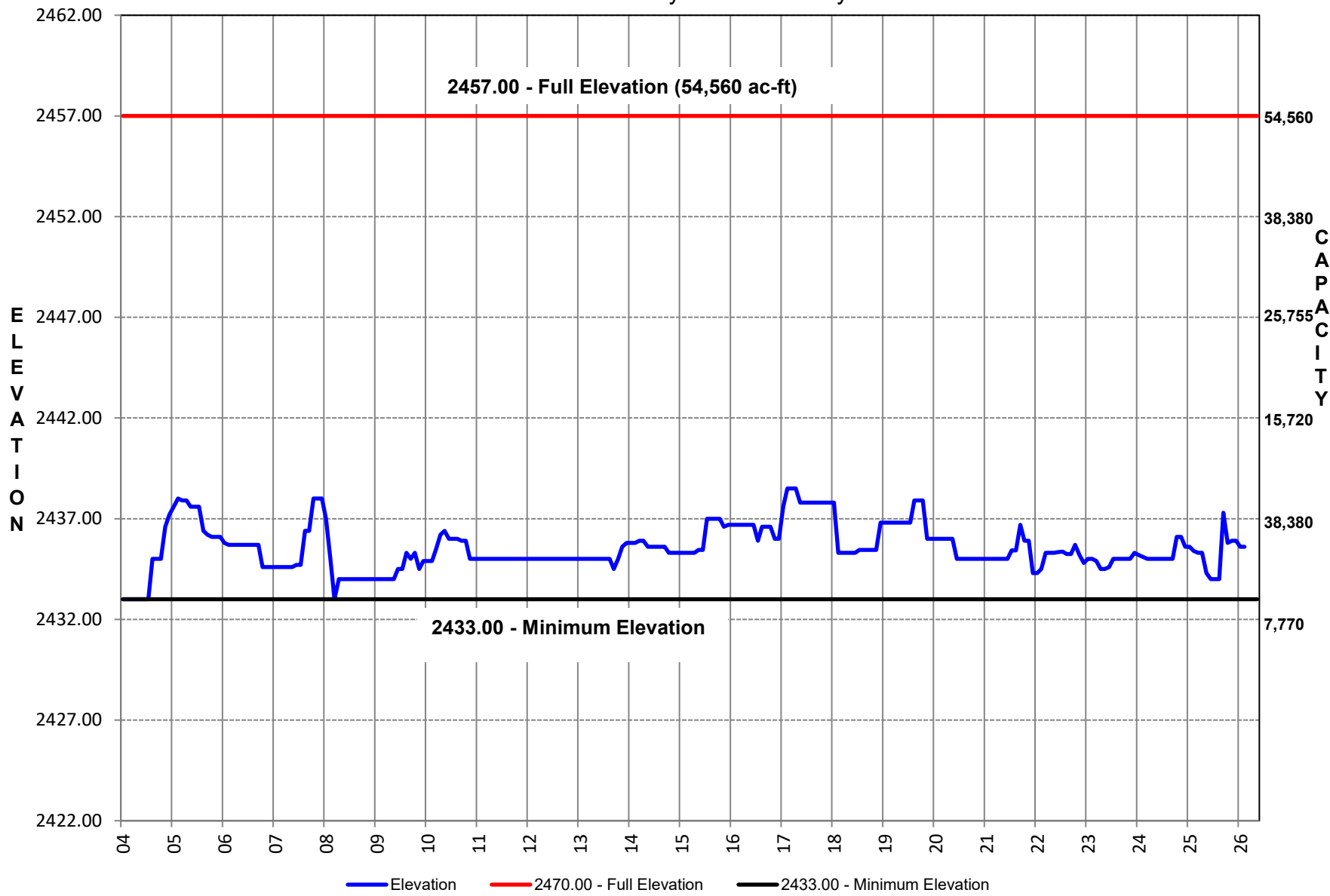
— Full Capacity

— Combined Storage (Ac-Ft)

— Prior to Ivie Pipeline

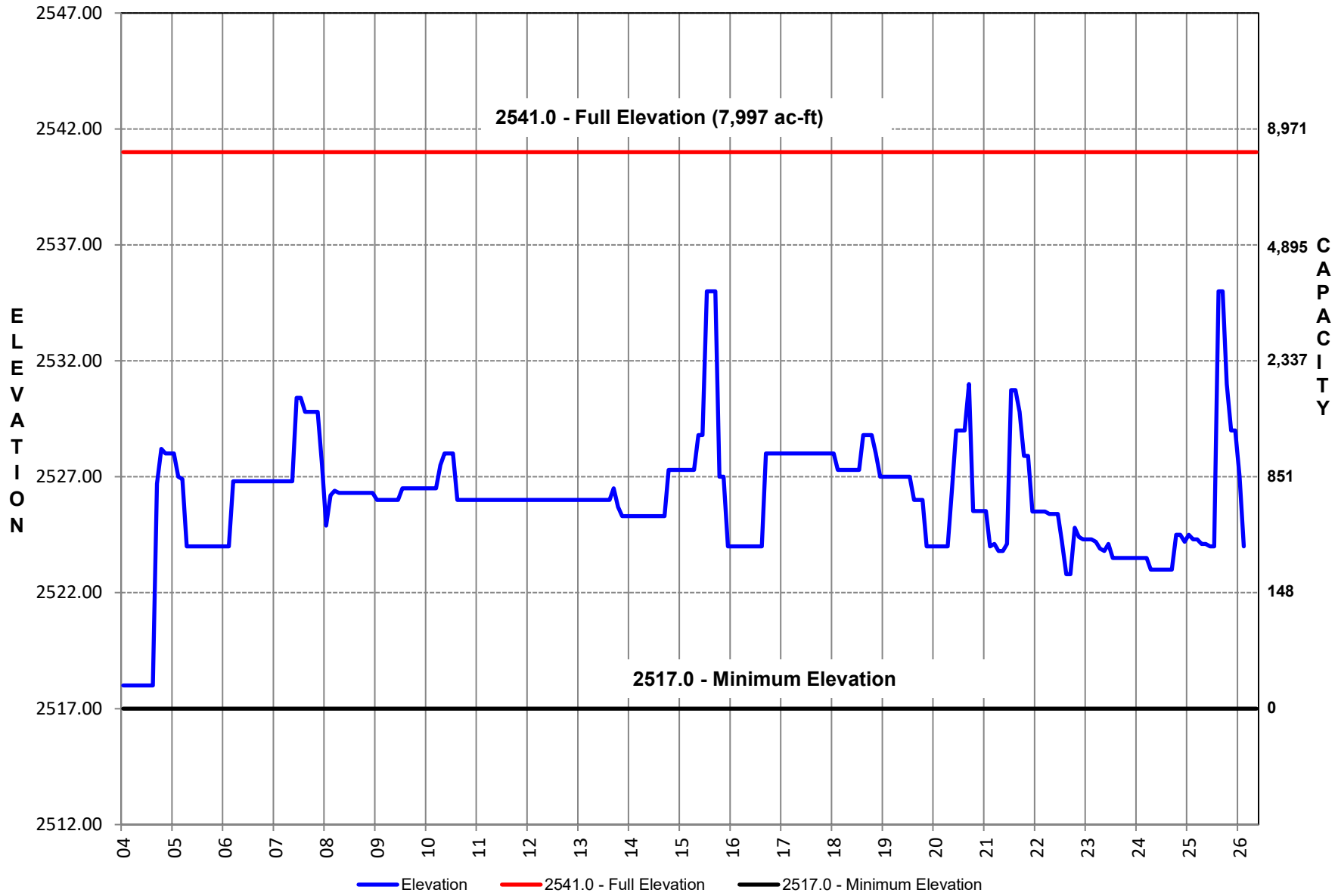
Natural Dam Reservoir

Elevation January 2004 - January 2026



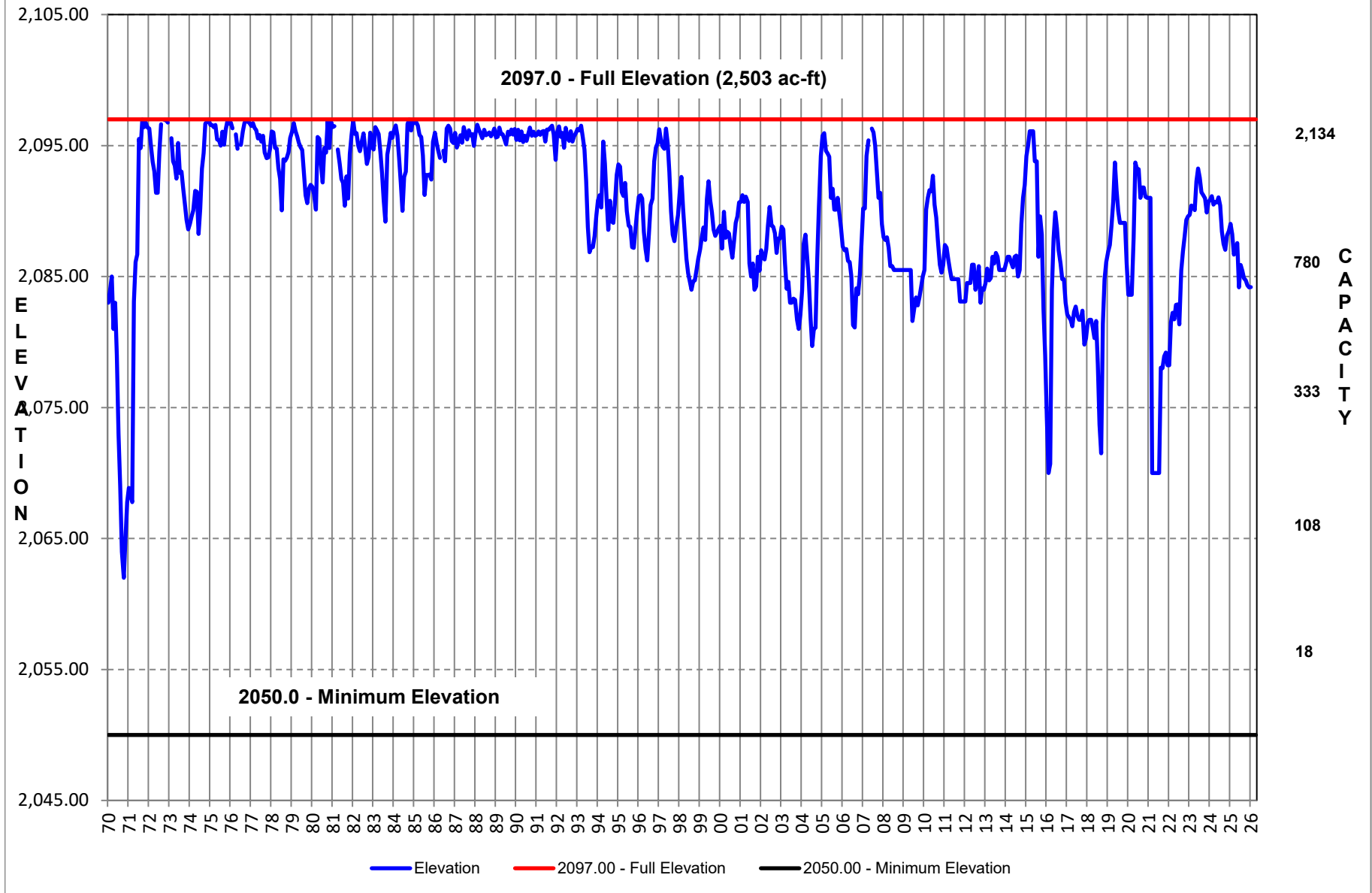
Sulphur Draw Reservoir

Elevation January 2004 - January 2026



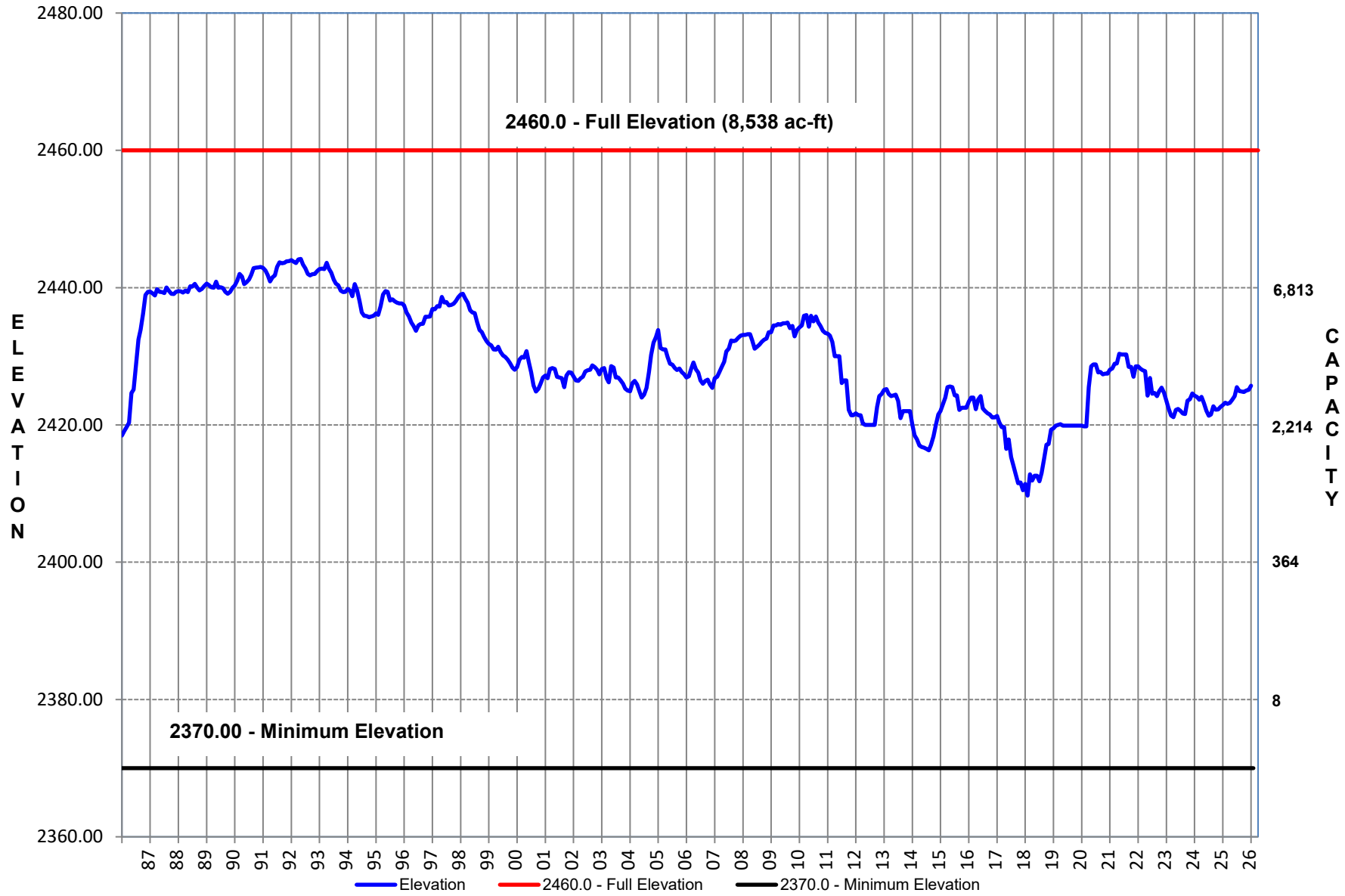
Barber Lake

Elev February 1970 - January 2026



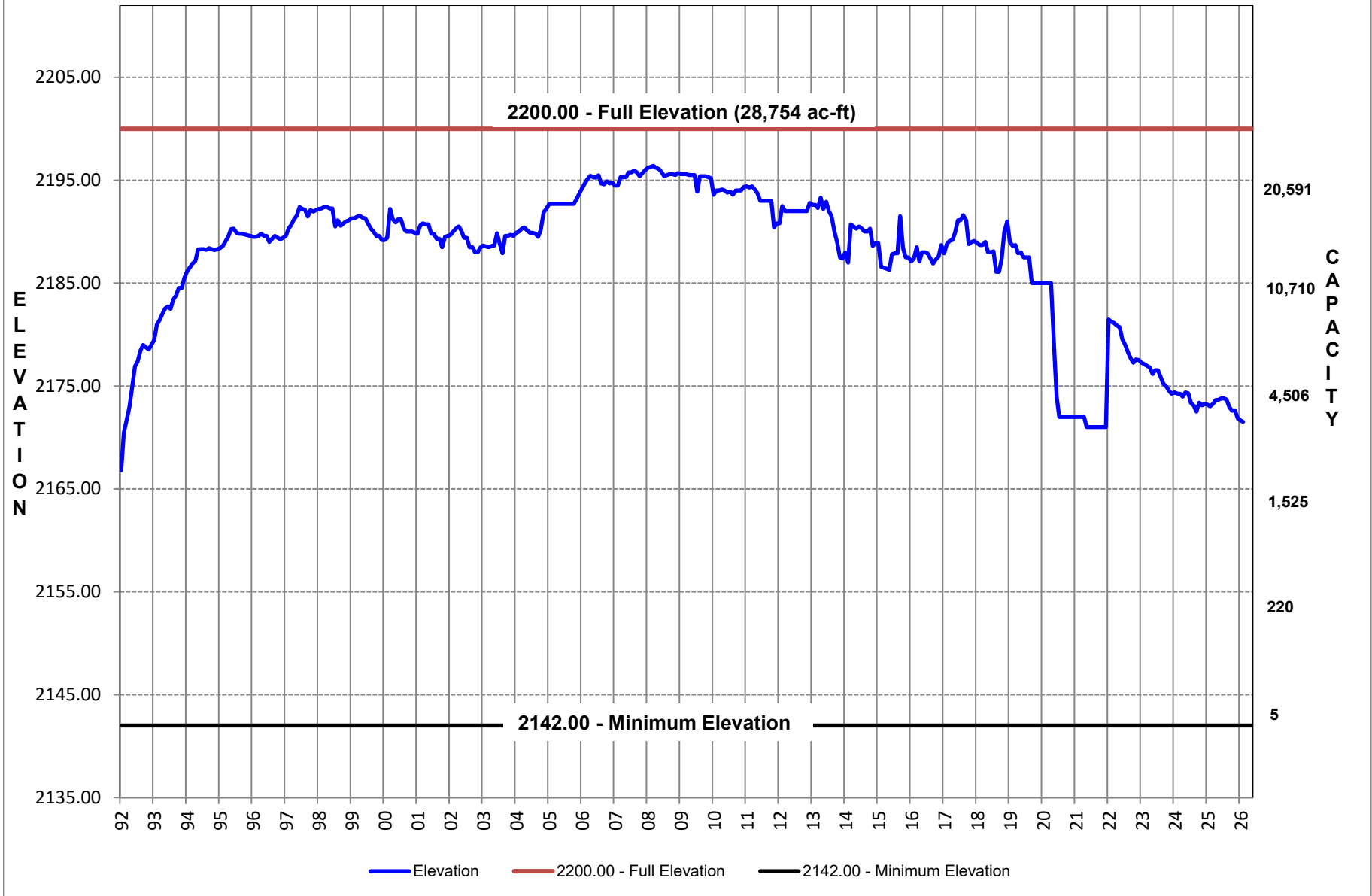
Red Draw

Elevation January 1986 - January 2026



Mitchell County Reservoir

Elevation January 1992 - January 2026



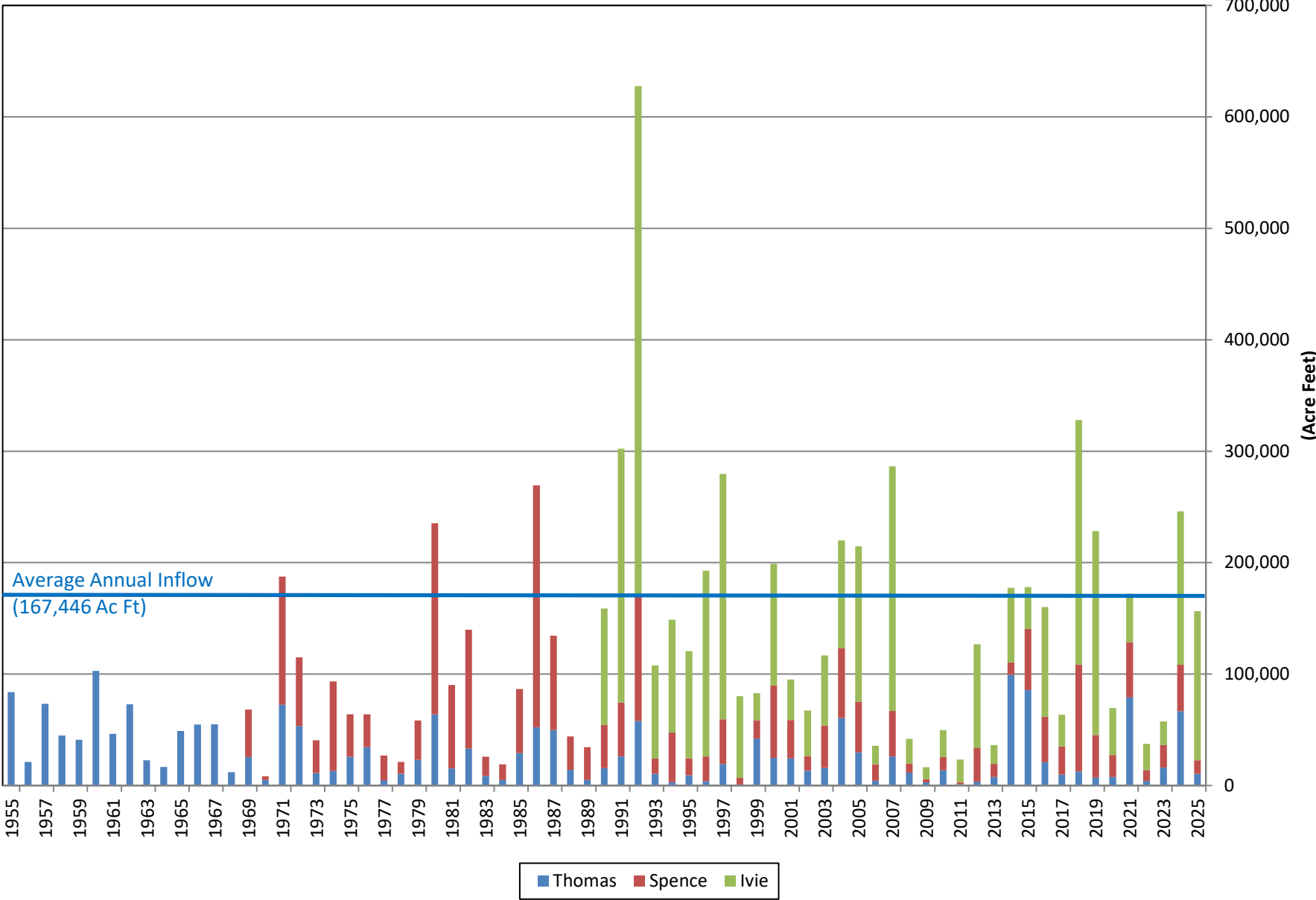
Annual Historical Data

COLORADO RIVER MUNICIPAL WATER DISTRICT

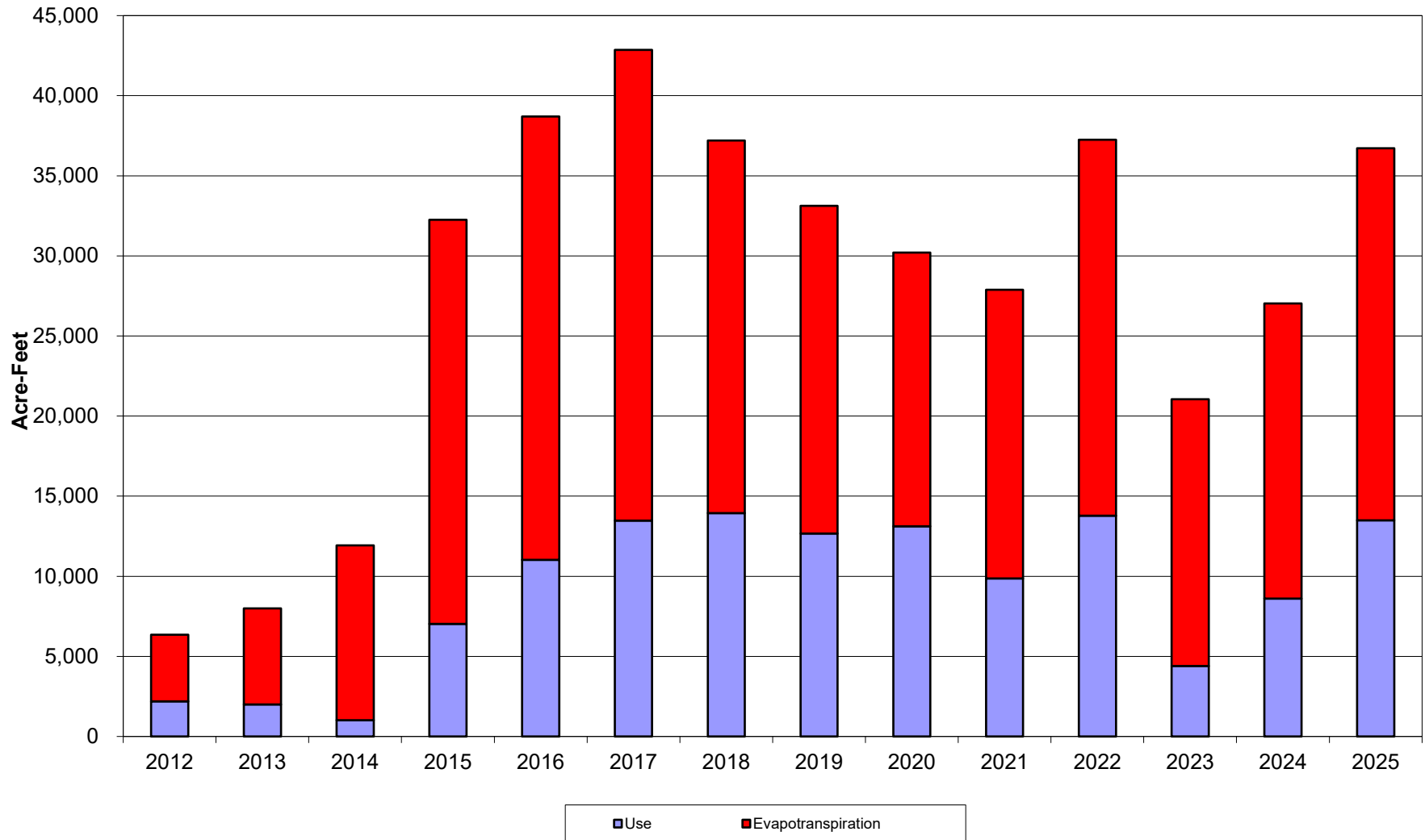
RESERVOIR INFLOW SUMMARY

Calendar Year	J.B. Thomas (AC-FT)	E.V. Spence (AC-FT)	O.H. Ivie (AC-FT)	Total (AC-FT)
2025	10,396	12,252	133,881	156,529
2024	66,760	41,529	137,649	245,938
2023	16,069	20,354	21,057	57,480
2022	4,001	9,985	23,456	37,442
2021	79,022	49,615	43,502	172,139
2020	7,767	19,636	42,062	69,465
2019	7,085	38,224	182,888	228,197
2018	12,555	96,010	219,357	327,922
2017	9,768	25,255	28,405	63,428
2016	20,888	40,914	98,262	160,064
2015	85,698	54,737	37,696	178,131
2014	99,308	11,218	66,819	177,345
2013	7,739	11,754	16,824	36,317
2012	3,408	30,247	93,091	126,746
2011	1,343	1,585	20,411	23,339
2010	13,717	12,034	24,069	49,820
2009	2,901	2,996	10,659	16,556
2008	11,565	8,125	22,229	41,919
2007	26,077	40,861	219,568	286,506
2006	4,339	14,624	16,716	35,679
2005	29,804	45,367	139,349	214,520
2004	60,474	62,624	96,945	220,043
2003	15,828	38,048	62,910	116,786
2002	13,341	13,094	40,928	67,363
2001	24,294	34,528	36,355	95,177
2000	24,713	65,118	109,145	198,976
1999	42,206	16,323	24,368	82,897
1998	856	6,032	73,280	80,168
1997	19,189	40,288	220,148	279,625
1996	3,920	22,193	166,633	192,746
1995	9,176	15,140	96,358	120,674
1994	3,100	44,557	101,101	148,758
1993	10,473	13,600	83,592	107,665
1992	57,863	111,840	457,817	627,520
1991	26,110	48,525	227,569	302,204
1990	15,584	38,972	104,278	158,834
1989	4,832	29,657	-	34,489
1988	14,181	29,968	-	44,149
1987	49,818	84,582	-	134,400
1986	52,244	217,121	-	269,365
1985	29,106	57,565	-	86,671
1984	5,027	14,101	-	19,128
1983	8,661	17,236	-	25,897
1982	33,049	106,852	-	139,901
1981	15,314	74,911	-	90,225
1980	63,972	171,415	-	235,387
1979	23,011	35,366	-	58,377
1978	10,553	10,674	-	21,227
1977	4,802	22,138	-	26,940
1976	34,534	29,457	-	63,991
1975	25,897	38,081	-	63,978
1974	13,095	80,377	-	93,472
1973	11,190	29,502	-	40,692
1972	53,512	61,546	-	115,058
1971	72,391	115,082	-	187,473
1970	4,945	3,364	-	8,309
1969	25,609	42,628	-	68,237
1968	11,977	-	-	11,977
1967	54,971	-	-	54,971
1966	54,777	-	-	54,777
1965	48,975	-	-	48,975
1964	16,660	-	-	16,660
1963	22,580	-	-	22,580
1962	72,841	-	-	72,841
1961	46,456	-	-	46,456
1960	102,836	-	-	102,836
1959	41,080	-	-	41,080
1958	44,921	-	-	44,921
1957	73,285	-	-	73,285
1956	21,240	-	-	21,240
1955	83,755	-	-	83,755
Annual Average	29,569	42,629	97,205	169,403

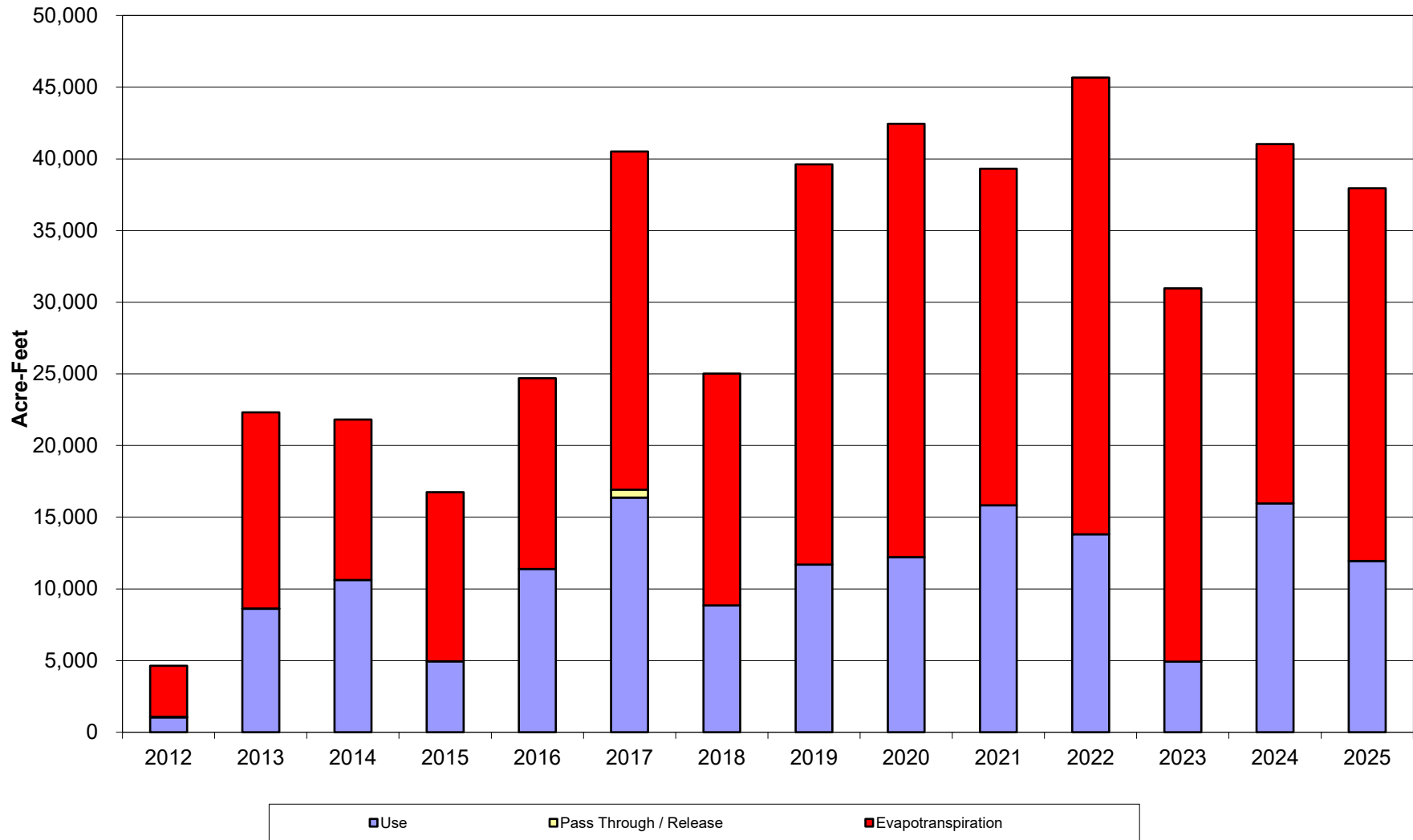
Combined Inflow (1955 through 2025)



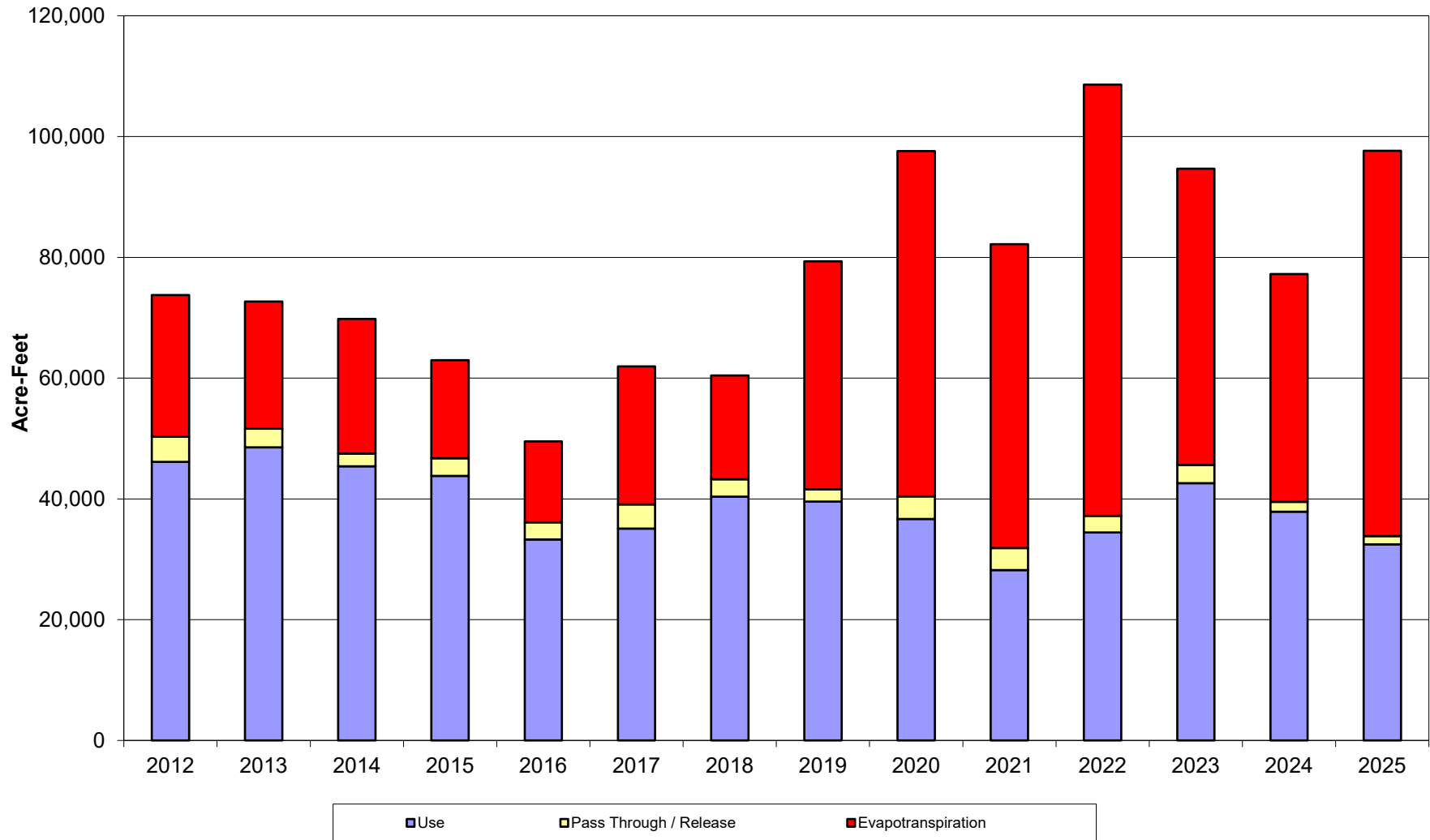
Lake J.B. Thomas
January 2012 thru December 2025



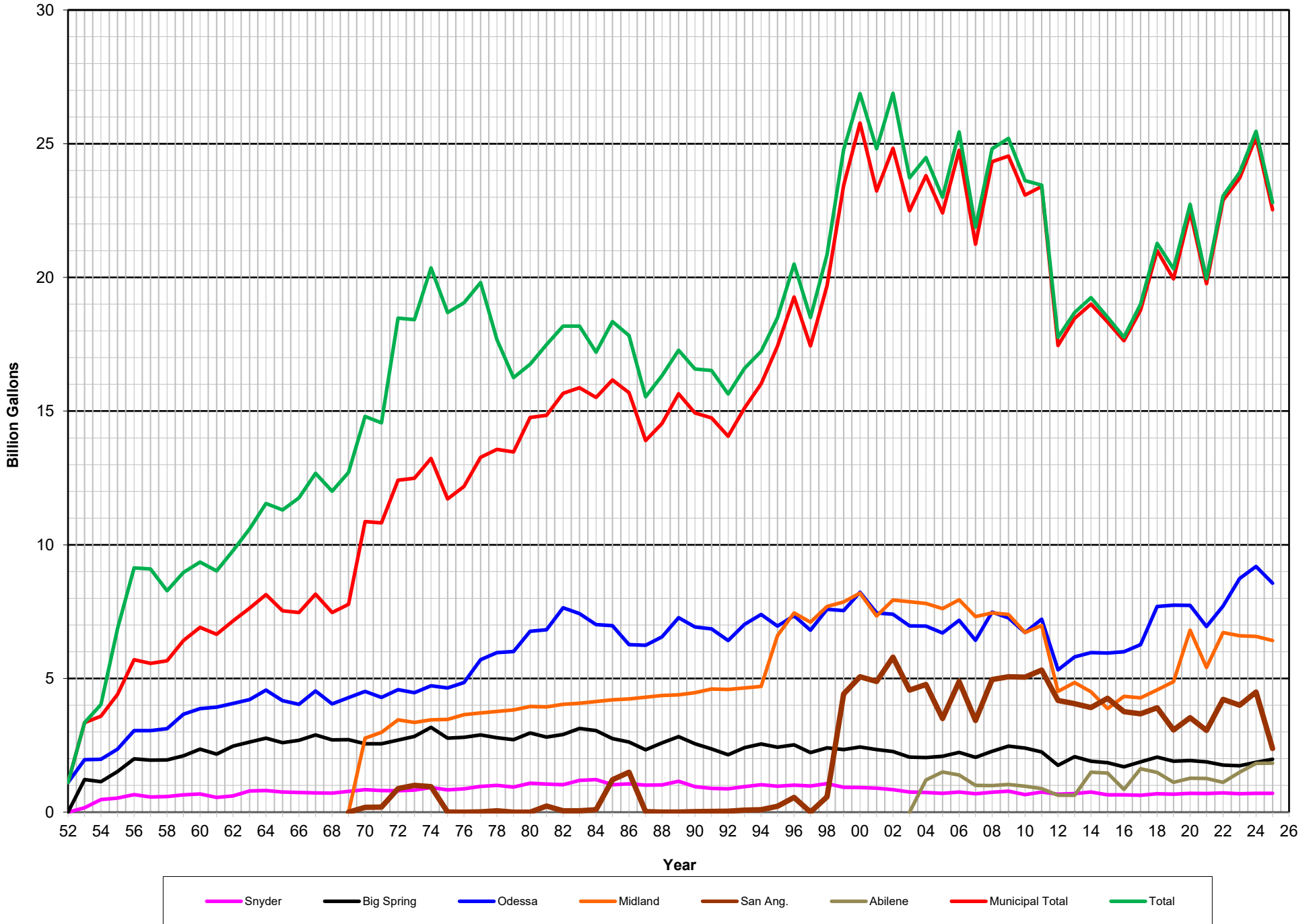
E.V. Spence Reservoir January 2012 thru December 2025



O.H. Ivie Reservoir
January 2012 thru December 2025



Colorado River Municipal Water District Historical Water Deliveries - 1952 to 2025



Colorado River Municipal Water District Source of Supply January 1962 through December 2025

